

K-SIM ENGINE



KONGSBERG



K-SIM ENGINE MTU V12 WATERJET H22

The K-Sim Engine MTU V12 WaterJet H22 simulates a fast catamaran with two high-speed, turbocharged 12 cylinder MTU diesels, each connected to a steerable KaMeWa waterjet. Maximum speed of the vessel is 35 knots. Simulated control panels on the bridge include panels for craft propulsion, steering control and engine monitoring.

Kongsberg Engine Room Simulators

Our engine room simulators provide realistic, hands-on experience in a ship-like environment. Systems include vital components, such as main engine remote control, engine-room local panels, controllers, engine telegraph, alarm systems, power supply switchboards, engine sounds etc.

We have an extensive model library of different propulsion plants and engines types, certified by the engine manufacturer as exact simulations.

Our library includes models of diesel engines such as MAN B&W, Wärtsilä, Sulzer, Pielstick, MaK and MTU as well as gas turbine, diesel electric, water jet and steam propulsion plants.

Our systems can be easily networked with our full ship's bridge simulator for total ship training.

Model Description

The propulsion section is typical of a KaMeWa waterjet installation with thrust and steering control levers, steering nozzle and reversing bucket position indicators.

The engine section includes indication of monitored signals and safety control functions. A Ship System Overview Display shows all available ship systems and makes navigation to different subsystem displays easy. 27 mimic displays are available for the student.

Fulfilling the requirements

The K-Sim Engine K-Sim Engine MTU V12 WaterJet H22 simulator model exceeds requirements in the STCW convention, Regulation 1/12 and fulfills DNV GL's standard DN-VGL-ST-033:2014-08 Maritime Simulator Systems.

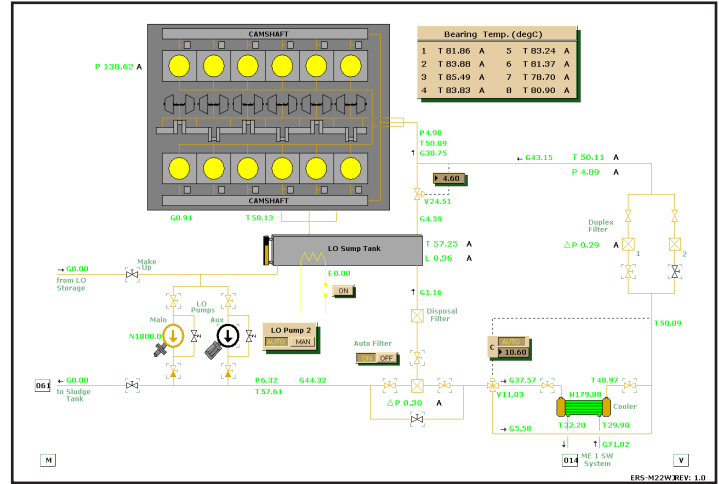
MODEL FEATURES & DETAILS

Main Engine Data

Type	MTU V12
Main Engine Speed	1800 RPM
Main Engine Power	300 kW
No. of turbochargers	6 per engine
Water jet Type	KaMeWa 63
Impeller Diameter	0,63 meters
Impeller speed	1000 RPM
Impeller Thrust	85000 N

Vessel's Main Particulars

Ship Type	Catamaran
Length overall	34,30 m
Breadth moulded	9.20 m
Draught loaded	1,5 m
Ship light-weight	100 tonnes
Cruising Speed	34 knots



Lube oil system

MODEL MAIN SPECIFICATIONS

High fidelity engine room systems include:

- Main SW system
- FO Systems
- FO purifier systems
- Water Jet systems

Incl Main reduction gear & Lube oil system.

- Compressed air systems

Control air and start air.

- Bilge water systems

Incl. Bilge water separator.

- Electric power plant

Incl Diesel generators

- LO Systems

- ME SW systems

- Me local control panels

- Turbocharger systems

- Jacket Water Systems

- ME safety system.

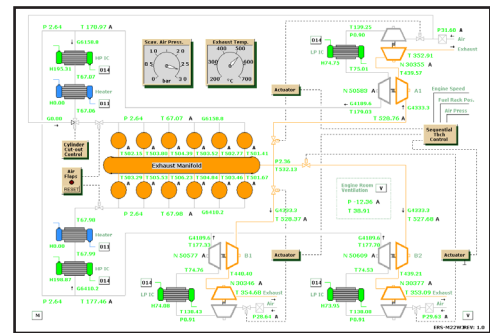
Incl shut down and slow down.

- WJ local control panels.

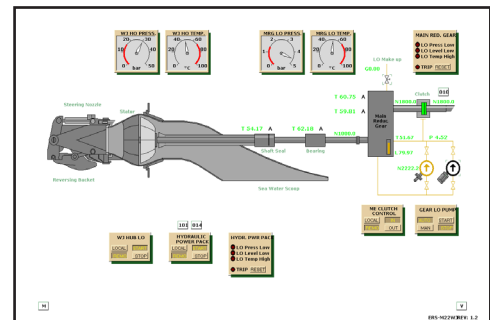
- Bridge-propulsion control

- Bridge-prop. monitoring

- Bridge-Engine monitoring



Turbo charger system



Water Jet System

Specifications subject to change without any further notice.

KONGSBERG MARITIME

Switchboard: +47 815 73 700

Global support 24/7 +47 33 03 24 07

E-mail sales: km.sales@km.kongsberg.com

E-mail support: km.support@kongsberg.com

km.kongsberg.com

KONGSBERG

