

K-SIM ENGINE



KONGSBERG



K-SIM ENGINE DE SEMI-SUBMERSIBLE DRILLING RIG - DE 88

The K-Sim DE88 Rig model is based on a diesel electric semi-submersible drilling rig. The Model contains 8 Wärtsilä medium speed engines, each rated 5100 kW for power generation. The propulsion system is diesel electric, and the engines are fitted with 11 kV generators supplying eight Azimuth thrusters, each rated 4000 kW.

Kongsberg Engine Room Simulators

Our engine room simulators provide realistic, hands-on experience in a ship-like environment. Systems include vital components, such as main engine remote control, engine-room local panels, controllers, engine telegraph, alarm systems, power supply switchboards, engine sounds etc.

We have an extensive model library of different propulsion plants and engines types, certified by the engine manufacturer as exact simulations.

Our library includes models of diesel engines such as MAN B&W, Wärtsilä, Sulzer, Pielstick, MaK and MTU as well as gas turbine, diesel electric, water jet and steam propulsion plants.

Our systems can be easily networked with our full ship's bridge simulator for total ship training.

Model Description

The control and automation systems include sophisticated power management, pump control and propulsion control. The main object for the simulator is to cover the operation, system understanding and advantages of a diesel electric plant.

It also focuses on decision training, responding to abnormal and emergency situations that may occur on this kind of offshore plant. Control room operator panels as well as steering panels are included.

Fulfilling the requirements

The K-Sim Engine DE 88 simulator model exceeds requirements in the STCW convention, Regulation 1/12 and fulfills DNV GL's standard DNVGL-ST-033:2014-08 Maritime Simulator Systems.

MODEL FEATURES & DETAILS

Main propulsion data

Rig Type	Ultra deep water semi submersible
Main Engines	8 x Wärtsilä medium speed
Propulsion Type	8 x Azimuth / 4000kW
Emergency Generator	1 x diesel generator set / 2000 kW
Dynamic position system	DP 2
Work Area	Up to 3000 meters water depth



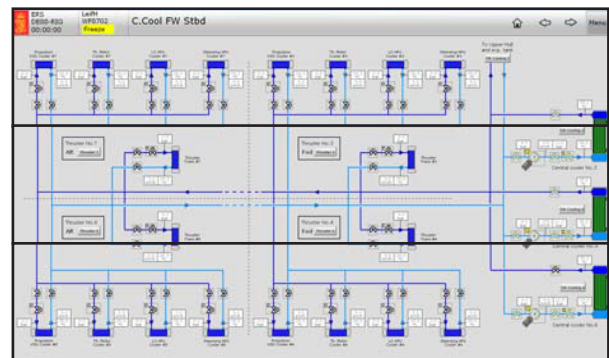
Vessel's main particulars

Length overall	117,0 m
Beam overall	78,0 m
Draught (operation/transit/survival)	20,5 m/9,7 m/ 16 m
Tonnage	37750 grt
Transit Speed	10 knots

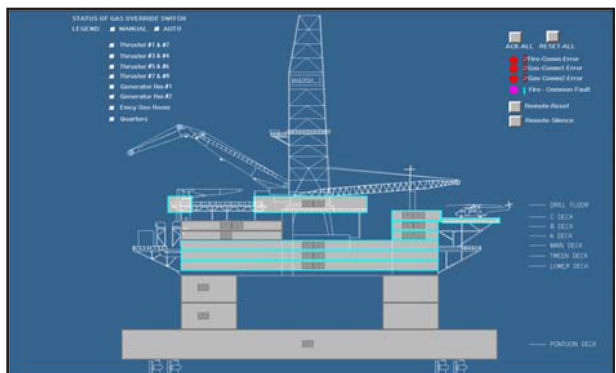
MODEL MAIN SPECIFICATIONS

The following simulated models are included:

- Power generation
- 8 Wärtsilä Medium Speed Main Engines*
- Main Generators
- 8 brushless A/C synchronous Generators*
- Integrated Automation System
- Alarm and Safety Warning System*
- Control and Power Management system*
- Thruster Control System
- Seawater Cooling System
- Lubrication Oil System
- Emergency Generator
- Diesel Generator Sets and Support Systems
- Electric Power Supply Conversion Equipment
- Switchboards, Distribution, and Panels for Electric Power and Lighting
- Fire Detection, Water Mist
- Fresh Water Cooling System
- Fuel Systems
- Fuel and Lubricant Handling and Storage Systems
- Compressed Air Systems
- Ballast system



Detailed process mimics



Fire and gas main overview

Specifications subject to change without any further notice.

KONGSBERG MARITIME
 Switchboard: +47 815 73 700
 Global support 24/7 +47 33 03 24 07
 E-mail sales: km.sales@km.kongsberg.com
 E-mail support: km.support@kongsberg.com

km.kongsberg.com

