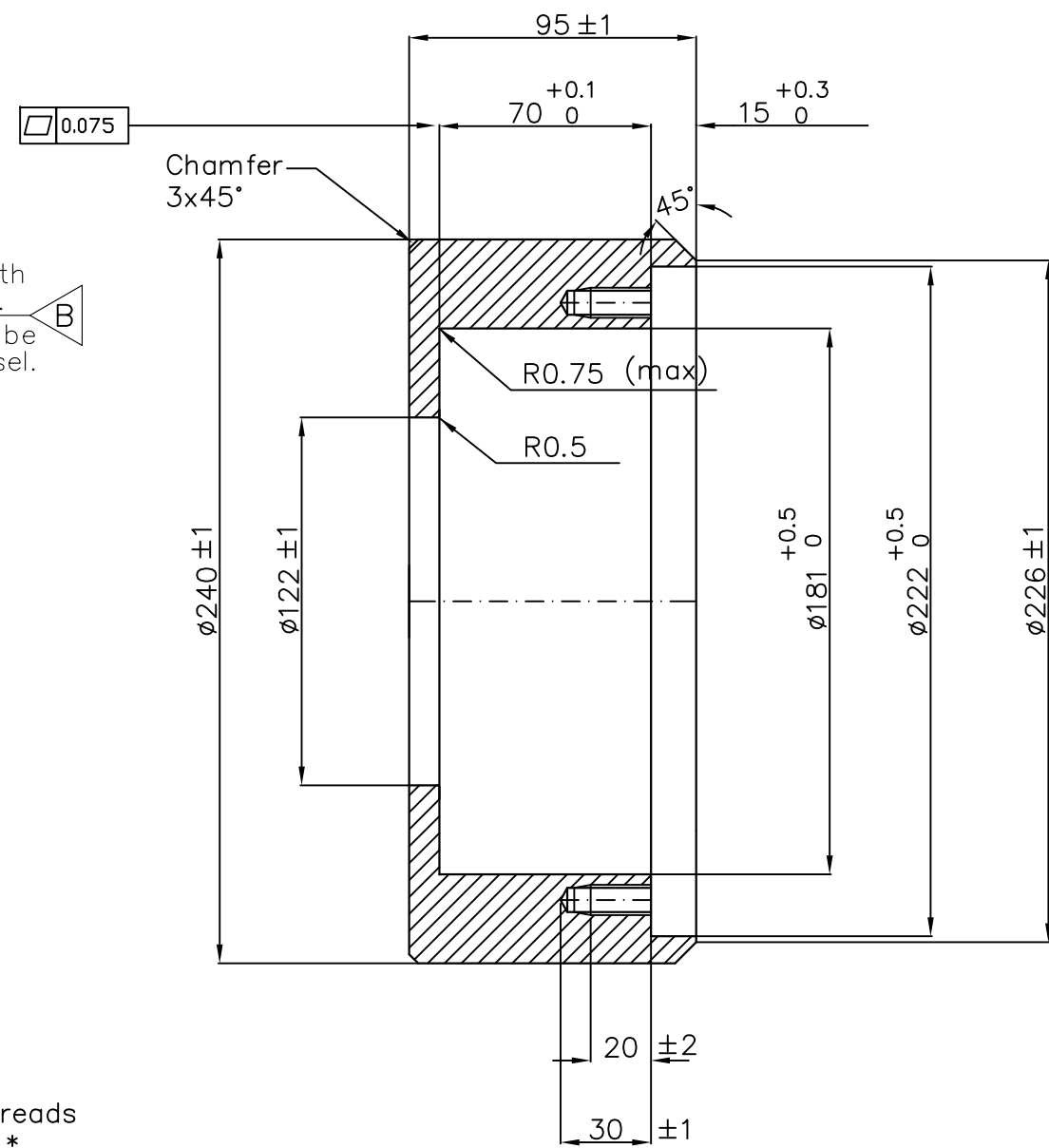


NOTE: The SELF-LOCK threads which are marked with SL*, must be made in accordance to the SIMRAD procedure 842-202125.

SELF-LOCK taps can be supplied by SIMRAD.



SURFACE TREATMENT:

1. SAND BLASTED TO SA 2.5
2. ONE COATING OF RED FERRIC OXIDE PRIMER

MATR.: STEEL TUBE, St 52-3 N (DIN 17121), $\varnothing 241/\varnothing 121 \times 110$

REV./SIGN.	B	BOW							
DATE	2015.12.17								
PROJ. METHOD			UNLESS OTHERWISE STATED, TOLERANCE: DIM.: ISO 2768-mK THREAD: 6g/6H				PARTS LIST: 499-204674	SIMRAD	
SCALE	1:2.5		MOUNTING RING				SHEET 1 OF 1	SH.SIZE: A4	REV.:
DRAWN	2000.11.15	TW	TRANSDUCER				871-204675		B
CHECKED	2000.11.23	BØJ							
APPROVED	2000.11.23	KTP	ES120-7C				FILE NO.: -		