

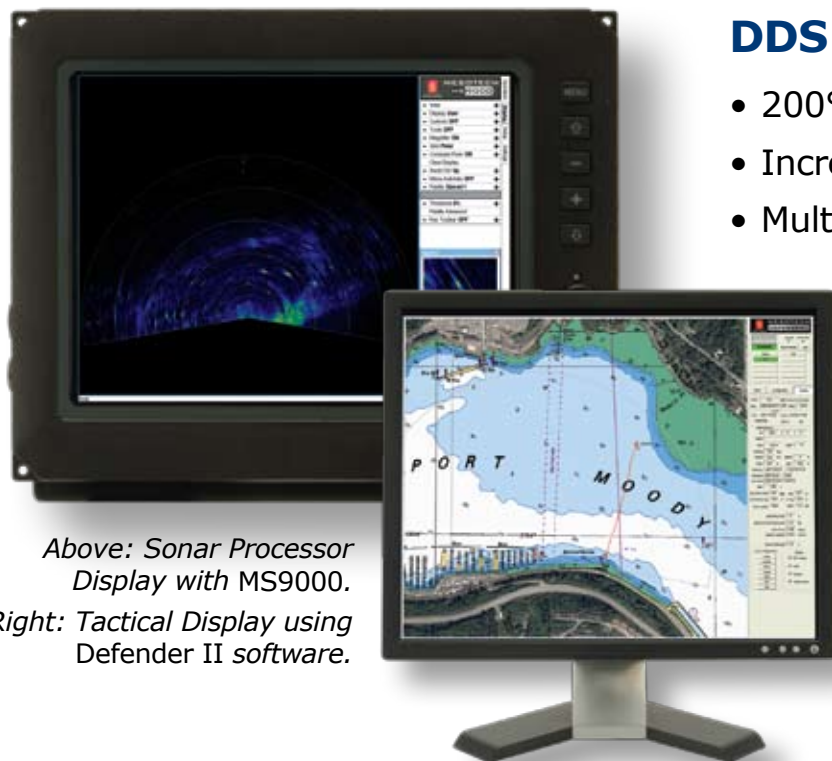
# DDS 9000

## Diver Detection Sonar

The DDS 9000 Diver Detection Sonar System is the next generation of multibeam sonar for diver detection. The DDS 9000 can detect low-target strength divers at long range with high reliability.

The DDS 9000 consists of a titanium sonar head that connects directly to a surface interface unit. Telemetry configurations include a standard Ethernet connection or an optional fiber optic configuration capable of communicating over 500m of cable without the need for external hardware. Communication up to 5000m is possible with the use of an external AC to DC power converter placed within 500m of the sonar head.

The DDS 9000 improves on the already proven technology of the SM 2000 currently in use by the US Navy and Coast Guard.



*Above: Sonar Processor Display with MS9000.*

*Right: Tactical Display using Defender II software.*

## DDS 9000 Features

- 200° coverage
- Increased effective bandwidth
- Multiple pulse types: CW, FM CHIRP
  - Supports long pulse widths
  - High source level
  - Increased sample rate
- Built-in fiber optic option does not require additional external hardware
- Built-in pitch, roll, heading, and depth sensors

### Key Facts

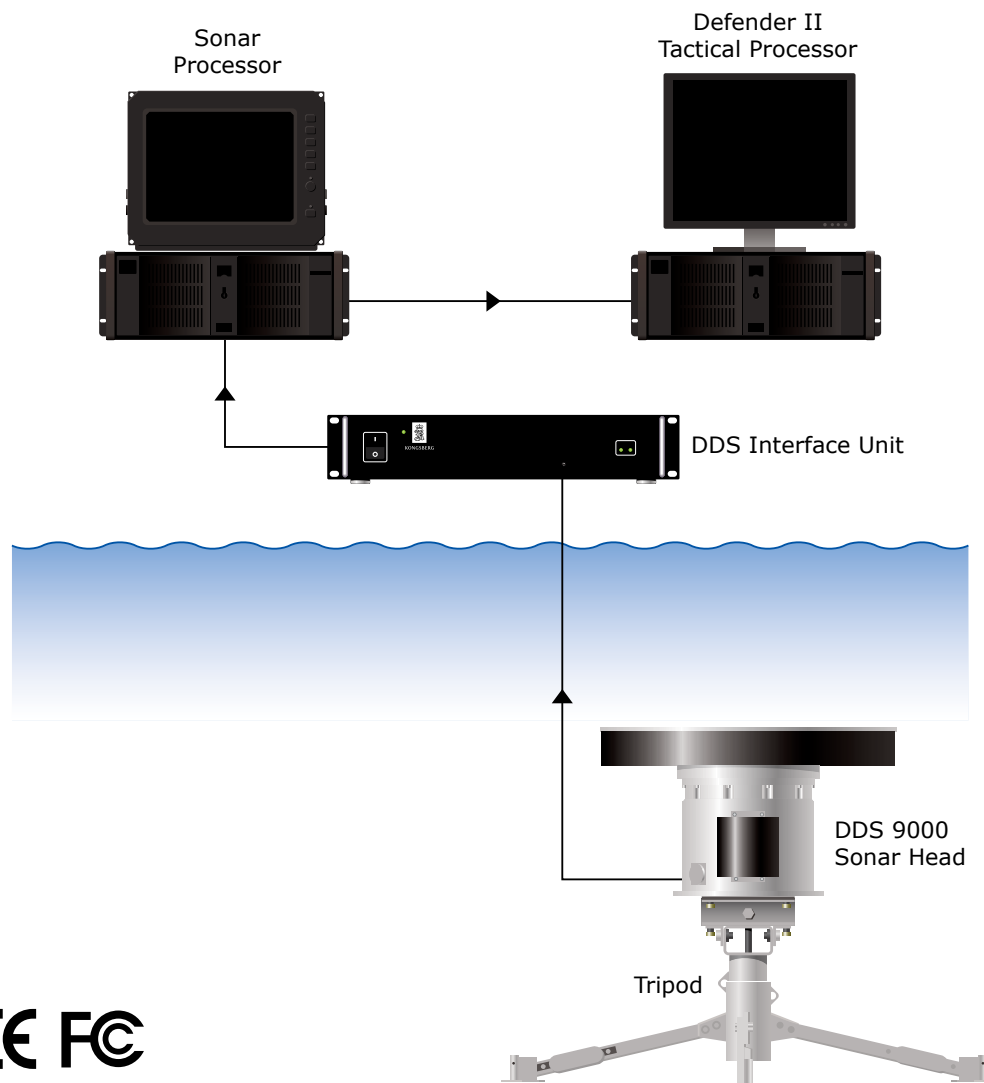
The DDS 9000 has 256 beams with a beamwidth of 1.5°. The narrow beams allow for discrimination of very small targets such as divers. The system has a maximum range of 1000 meters with detection of diver-like targets at ranges in excess of 600m. Maximum detection range capability is strongly dependent on water temperature and salinity. Other targets such as swimmer delivery vehicles and submarines can also be detected.

### Sonar Processor

The sonar processor uses a rugged rack-mountable computer chassis. The DDS Interface Unit connects to the sonar processor via an Ethernet connection. The Interface Unit powers and communicates with the sonar head using a single power and telemetry cable. A standard Ethernet connection or optional fiber optic telemetry connection is made directly with the sonar head without the need for any external hardware.

### Tactical Processor Option

A connection to a local area network (LAN) is provided to connect to the *Defender II* Tactical Processor or a C2/C4ISR central command and control system.



ISO 9001



© Copyright 2007 Kongsberg Mesotech Ltd. All rights reserved.  
Kongsberg Mesotech Ltd. reserves the right to change product specifications without notice.

### KONGSBERG MESOTECH LTD.

1598 Kebet Way, Port Coquitlam, BC Canada V3C 5M5

Tel. +1.604.464.8144 • E-mail: [km.sales.vancouver@kongsberg.com](mailto:km.sales.vancouver@kongsberg.com)

[www.kongsberg.com](http://www.kongsberg.com)



KONGSBERG