



KONGSBERG

SDP-21 K-Pos

SDP-21 Upgrade to Latest Generation of DP Systems (K-Pos)

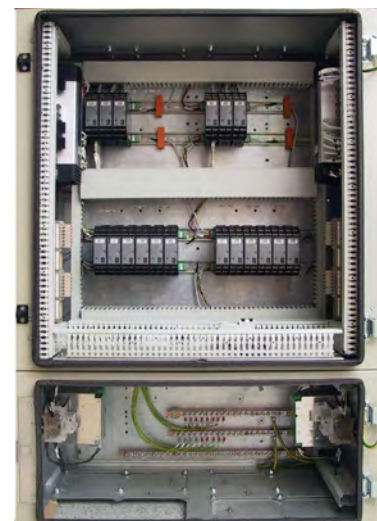
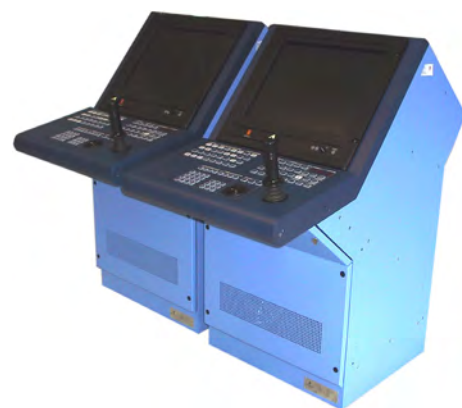
The SDP-21 K-Pos upgrade kit converts a SDP-21 system that has been previously installed on a vessel to a K-Pos system. Upgrading extends the lifetime of the system and brings it up to the latest state-of-the-art functionality and technology.

Features

- Latest K-Pos software release
- Windows XP based Operator Station computers (MP7600)
- 20.1" or 23.1" TFT monitor kits depending on OS
- KM-05 (K-Pos) operator panels
- Powerful DPC control computers (RCU501)
- RIO 200 input/output modules
- No extra cabling or mechanical changes
- Performed by KM Service Engineers

What you get

- State-of-the-art K-Pos system
- Software options and interfaces from the original system available in the upgraded system
- New interface loop typicals with improved loop monitoring
- Improved input/output and power segregation
- One input/output module for each thruster
- Updated and improved functionality
- Ready for newly developed K-Pos functions and interfaces
- New Operator Manuals
- Reduced cost for spares and service
- Re-use of existing bridge integration



What to do

- Remove the original computers and monitors from the OSs.
- Remove the original Operator panels from the OSs.
- Install MP7600 computers.
- Install 20.1" or 23.1" TFT monitors depending on OS.
- Install KM-05 Operator panels.
- Disconnect all electrical connections in the DPC.
- Remove original hardware including mounting plates from the DPC.
- Install new mounting plates with new hardware components in the DPC.
- Connect existing field cabling to the new hardware.
- Install new DP software.
- System functional test of the system
- Commissioning and sea trial of the system
- Customer Acceptance Test (CAT)

Type Approval and classification

Classification societies require to be informed about the upgrade. This is the vessel's/owner's responsibility. The classification society will evaluate the need for participation during the functional test of the system.

SDP-21 K-Pos Upgrade Kit

Part No.	Qty.	Description
704293	2	MP7600 OS computer
702997*	2	Mariner kit for MP7600
507165*	2	Horizontal PC Bracket kit
320400	2	K-Pos Electrical Mechanical kit (for KS-01 consoles)
320800	2	K-Pos Electrical Mechanical kit (for KS-03 and KM-04 consoles)

Standards Applied

The upgrade is designed to conform to the following standard:

- EN 60945 Marine Navigation and radio communication equipment and systems - General requirements: methods of testing and required tests

CE Marking

The equipment conforms to the relevant EU directives.

Options and Extensions

- Additional functions and interfaces
- Remote diagnostics
- cJoy operator and wing terminals
- DP recorder/reviewer
- New alarm printers
- Gyro, MRU and wind sensor replacement
- UPS replacement
- Additional position-reference systems
- APC-1# kit (for HiPAP systems)

Part No.	Qty.	Description
701898	2	PE cable
*	2	Operator Panel for OS
303294	2	20.1" TFT monitor (for SN96 consoles)
703736	2	23.1" TFT monitor
319764	1	DPC-21 K-Pos upgrade kit
**	1	K-Pos software release

*) The component part number will vary according to the type of operator station originally installed.

***) The software part number will vary according to the K-Pos release to be installed.

For more information

Please contact Customer Support at: km.support.dp@kongsberg.com

