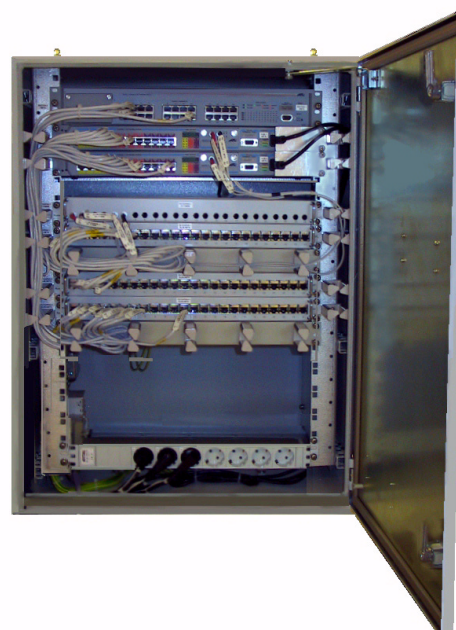




Network Distribution Units

Network Distribution Units (NDUs) facilitate simple and cost-effective connection by acting as local converters for both fibre-optic, 10Base-F/100Base-FX and Shielded Twisted Pair, 10Base-T/100Base-TX (STP) network cables.



Features

- 10/100 Mbps port speed for both 10Base-F/100Base-FX and 10Base-T/100Base-TX switches and converters.
- Models for both 115 and 230 VAC operation
- 8 models available to meet individual system requirements
- The switch supports SNMP management, asynchronous ASCII terminal and Telnet
- IEE 802.3 compliant

Switch Features

- Switches include multiport bridges and multicast filters
- All switches are 10/100 managed fast Ethernet switches
- Switch management is web-based, SNMP, Telnet and Omega Command Line interface

Description

NDUs are wall-mounted cabinets containing converters, switches and patch-panels for simple and cost-effective connection of both fibre-optic (10Base-F/100Base-FX) and STP (10Base-T/100Base-TX) network cables. All the different configurations have internal 19" rack-mounting and can be supplied for both 115 and 230 VAC operation.

NDUs comprise the following equipment in varying quantities and combinations:

- Fibre-optic converters
- Patch-panels for STP and fibre-optic cables
- STP switches

A module's name indicates its configuration. For example, NDU-13SF3 has: 13 STP connections, a switch and 3 fibre-optic connections.

Models that include a switch enable network segmentation and incorporate a bridge function for each port and a multicast filter to minimise network traffic.

Technical Specifications

Standards Applied

The equipment is designed to conform to the following standards:

- EN50081-2 Electromagnetic compatibility Generic emission standard Part 2: Industrial environment.
- EN50082-2 Electromagnetic compatibility Generic immunity standard Part 2: Industrial environment.
- EN60065 Audio, video and similar electronic apparatus. Safety requirements (IEC 60065: 1998, modified).
- EN60204 Safety of machinery Electrical equipment of machines Part 1: General requirements
- EN60950 Safety of information technology equipment.
- EN60945 Marine navigation and radiocommunication equipment and systems General requirements: Methods of testing and required test results.
- IACS E10 Unified environmental test specification, classification

CE Marking

All equipment satisfies the relevant EU directives.

Type Approval

All models are type approved by Det Norske Veritas (DNV) for ships and MOUs.

Dimensions

Height:	800 mm
Width:	600 mm
Depth:	500 mm
Weight:	33 kg (maximum)

Electrical

Input voltage:	230 or 115 VAC (+10%, -15%)
Frequency:	47 to 63 Hz
Power consumption	20 W for each converters or switch unit

Environmental Specifications

Ambient temperature	
operational:	-15° C to 55° C
storage:	-25° C to 70° C
Ambient humidity	
operational:	up to 95% relative humidity, non-condensing
storage;	less than 95% relative humidity, non-condensing
Heat dissipation:	approximately equal to power consumption
Acoustic Noise:	55 dB(A) at 1 m

Cabinet Specification

Material:	steel
Protection standard:	IP56
Colour:	grey, RAL7032*
* Other colours available upon request	

Additional Information

Article numbers

Unit Name	Nominal Voltage	Article number
NDU-12SF12	115/230	51360
NDU-18SF6	115/230	51370
NDU-21SF3	115/230	51350
NDU-22SF2	115/230	51340
NDU-23SF1	115/230	51330
NDU-24SF18	115/230	51390
NDU-32SF12	115/230	51380
NDU-SF24	115/230	51400

KONGSBERG MARITIME AS

P.O.Box 483, N-3601 Kongsberg, Norway

Telephone +47 32 28 50 00 Telefax +47 32 28 50 13

e-mail: km.sales@kongsberg.com, www.kongsberg.com



KONGSBERG