



Traffic Management

Traffic Management is Foresight's system for voyage and vessel information, as well as emergency response. It is used by Vessel Traffic Services (VTS), coastal administrations, and other maritime authorities who monitor and manage a defined maritime domain area.

The system has two main purposes: To support the management of voyage information and emergency response activities. The management of voyage information provides the operator with an overview of vessel movements and specific vessel and voyage-related information. It also maintains historical logs for all vessels within the geographical responsibility areas.

The system includes functionality for registering information about ongoing situations such as contraventions and incidents. A bi-directional information flow with other modules of the Foresight family enables features like auto-highlighting vessel track symbols on the chart as their status changes. Status changes could include "Awaiting clearance," "Clearance granted," or when the vessel is involved in an ongoing situation.

Traffic Management also supports mandatory ship reporting (according to IMO SRS) and duty watch handovers.

FEATURES

- Overview of future and present vessel traffic in your area
- Timeline view indicating the activity level within your area for the hours ahead
- Efficient support for granting clearance
- Register mandatory ship reports (IMO Ship Reporting System) with minimum effort
- Tailored support during ongoing situations with checklists and reporting
- Watch report and handover support with customized reporting elements
- User interface with focus on a consistent, smooth and highly responsive user experience.

Voyage Management

An overview of future and present vessel traffic in a responsibility area is provided to the operator, which can be grouped as planned voyages, clearance candidates and cleared voyages. Planned voyages may come from external systems such as SafeSeaNet or other Maritime Single Window, as well as from voyage data registered manually in system.

When a planned voyage is matched with a vessel that is approaching or moving inside a responsibility area, the voyage automatically becomes a clearance candidate, which is then placed in a “to-do” list for the operator to grant or reject clearance, as needed.

Voyages that have been granted clearance inside a responsibility area are marked and listed as cleared.

Support for mandatory and voluntary ship reporting systems (SRS) and cargo details are essential elements of the total voyage management, as well as piloting or pilot exemption certificate (PEC) details.

Incident Management

The incident management module provides support during ongoing situations with checklists and reporting that are both tailored to the type of incident and comply with local regulations. Two examples of situation types are Grounding and Collision.

Pre-configured checklists will support the operator during an ongoing situation, giving the required sequence of actions and an efficient way of reporting the current status of a situation. Screenshots and traffic replay videos are supported as attachments to the situation record and situation report.

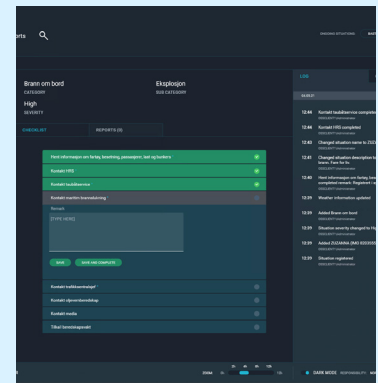
A registered situation can be submitted to the national competent authority or to a regional Maritime Single Window if that is required. As an example, the system includes a machine-to-machine interface that sends incident reports to a third party system, such as EMSA's SafeSeaNet.

Reporting

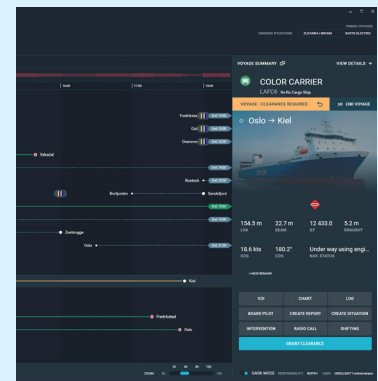
Pre-configured report templates are included for a variety of report types, which can be tailored and expanded according to new requirements. Examples of report types are Situation report, Traffic Statistics report, Duty Watch report and Intervention report.

Specifications:

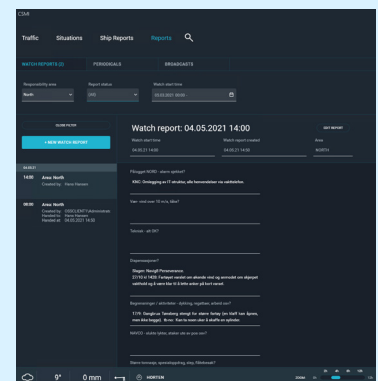
- N-tier architecture with application-based client
- Minimum screen resolution 1920 × 1200 pixels
- Microsoft Windows Server 2022, SQL Server 2019, Windows 11



Incident Management



Timeline and vessel information



Watch report