

Foresight



KONGSBERG



Traffic Display

Traffic Display is Foresight's advanced ship traffic system for enhanced situational awareness and strategic planning. This intelligent, automated, and adaptive tool enhances understanding of the maritime picture by combining real-time situational awareness with historical data and predictive analytics. It empowers maritime authorities with proactive, optimized decision-making capabilities in time-critical situations.

The system provides a common operating picture that allows maritime authorities to identify and proactively manage risks. This high-performance geographic information system ensures that the right information is presented at the right time, enhancing decision support for operators.

By integrating data from a range of advanced sensors, Traffic Display consolidates information into a single, user-friendly, and intuitive display. It is designed with the user in mind, offering a seamless, customizable, and adaptive interface. Information is delivered precisely, quickly, and accurately.

The near real-time common operating picture/traffic image is presented in a 2D chart view, with an optional highly realistic 3D perspective view. Operators have immediate access to track and sensor control functions within the chart view. Powerful track information portrayal ensures that vessels of interest are identified and managed safely and promptly.

The real-time common operating picture/traffic image is constructed from a suite of highly advanced sensors, both above and below water, including radar, AIS, electro-optic, radio direction finder, electronic surveillance measures, environmental sensors, and sonar, along with satellite integration.

FEATURES

- Common operating picture for situational awareness
- Adaptive, intelligent and automated
- Combines real-time information with historical data and predictive analytics for optimized decision making
- MS AD and LDAP server integration
- Unique and powerful information portrayal engine
- Ingest virtually any map data format
- OGC compliant. WMS, WMTS, WFS
- Wide array of measurement tools
- Send alerts to management with intuitive graphical presentation of situations

Operating System

Runs on the Microsoft Windows operating system and supports a vast number of raster and vector image formats, terrain elevation and 3D model data sets.

Additional benefits

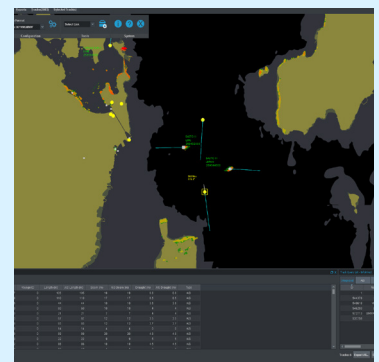
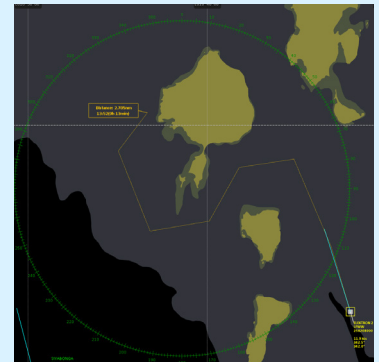
- Radar video direct from more than 100 radars: Complete radar picture ensuring highest detection probability
- Up to 4 000 C-Scope Operator Clients in one system
- High quality radar video approaching “raw” quality: Provides shape and size of vessels to aid classification
- Web services Open Geospatial Consortium, Inc.® Web Map Service/Web Feature Service compliant: Portrayal of information such as satellite/aerial imagery, meteorology, hydrology, drift models (SAR, oil spill), etc.
- Multiple floating Chart Views using OpenGL®: Realistic traditional 2D chart presentation
- Prioritized decision support notification: Operators are notified of important track and system warnings
- Responsibility Areas: Operators know who is responsible for defined areas
- Infolinking: Augmented track data linking from data sources

Digital Maritime Services

With digitalization advancing, coastal and port authorities need to have the right technology solution provider today. Kongsberg Norcontrol actively contributes to the IMO e-navigation implementation plan, as evidenced by our leadership of several groundbreaking R&D projects. In these projects we have developed and demonstrated solutions through the Foresight system, thus ensuring Kongsberg is not only ready, but at the forefront of Digital Maritime Services development and implementation.

Options:

- 3D perspective view – instant, realistic traffic picture for non-mariners
- Integrated Chat client – easy communication between on-line operators
- AIS messaging – addressed and/or broadcast text messaging to vessels
- Vessel Movement and Information module - embedded traffic analysis and reporting
- Route Manager – visualize route to destination with ETAs
- Track adaptors – AIS, Electro optic, IVEF, LRIT, VMS sonar etc
- Additional Symbology (STANAG 4420/APP6A) – appropriate symbology for military users
- DSC communication – Call directly to a ship from the operator client
- IVEF Adapter – seamlessly display data from other VTS systems
- AIS Adapter – displays AIS-only tracks from an AIS source without integration



Screenshots from from the Traffic Display view.