

Foresight



KONGSBERG

cView situational awareness

cView is the platform for easy access to invaluable information on the maritime common operating picture. It can be used to display vessel traffic, prevent environmental disasters, and combat illegal activities.

Sensors feeding into the system include AIS and radar systems. In addition to land-based sensors, cView integrates satellite information sources, allowing for coverage of very large areas in near real-time and independent of weather conditions.

Users can display ship traffic in a given area with live track display, analysis, and visualization. The system can load historical AIS data to replay events and load WFS/WMS features such as satellite images and oil spills. It supports both 3D and 2D map engines. This versatility enables users to visualize and analyze incidents effectively.

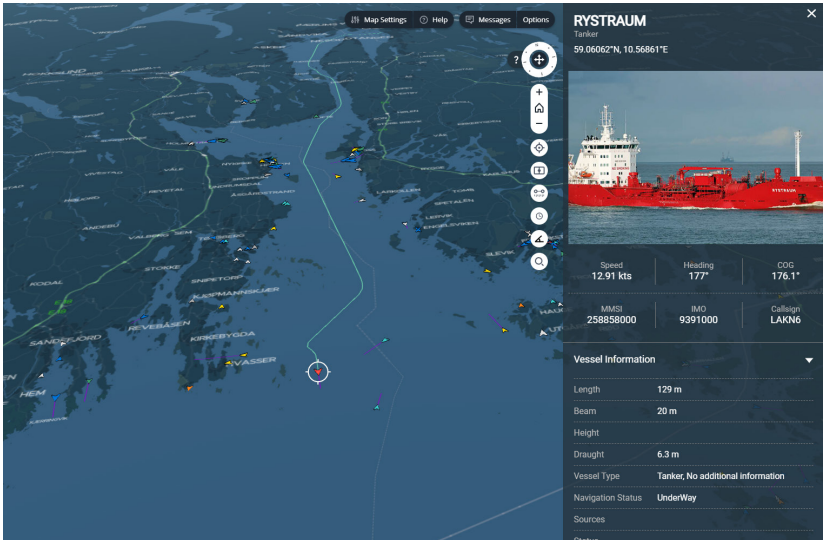
cView is a product in the Foresight family of maritime domain awareness systems. These systems can seamlessly integrate with each other, sharing data and working together for optimized situational awareness. This includes our high-technology, intelligent, and adaptive Traffic Display system and our suite of Management Information Systems.

System environment

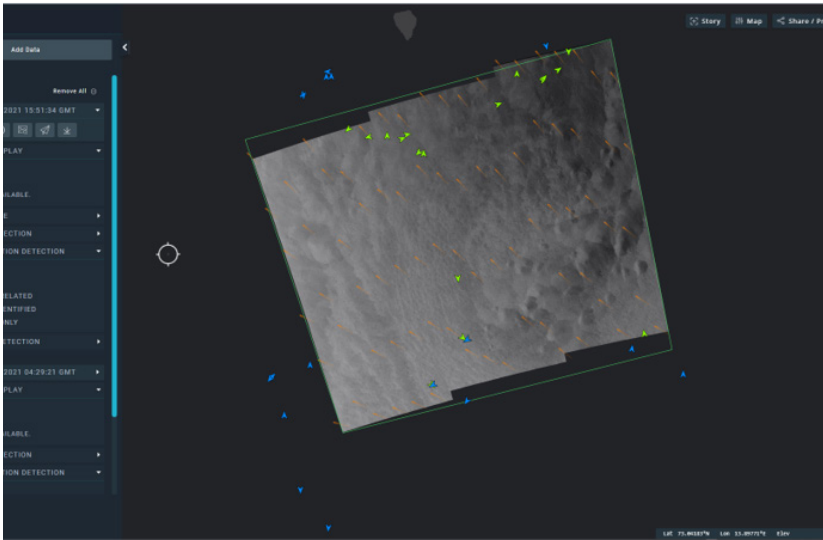
- Web based, hosted in Azure in Virtual Machines (or on premise)
- Containerized (Docker). Ease development, deployment and upgrades

FEATURES

- Display tracks from various sensor sources such as AIS and radar.
- Replay data sets at high speeds for detailed analysis.
- Effortlessly switch between 2D and 3D views for versatile data visualization.
- Integration with Kongsberg Satellite Services (KSAT) products, including SAR images, oil spill detection, wind data, and vessel detections.
- Support for WMS/WMTS, GeoJSON, GeoRSS, CZML, KMZ, ArcGIS Server, and other formats.
- Import and display overlays of various data sets for visual presentation of critical information.
- Gather statistical data to create highly customized dashboards for traffic analysis.
- Accurate time measurement tools to determine ETA and TCPA



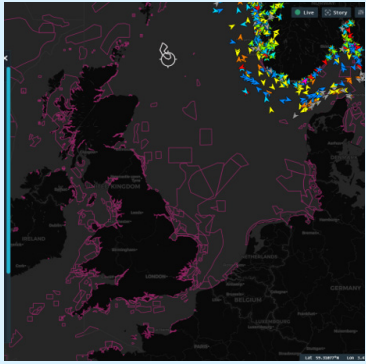
Real-time view of the maritime traffic picture with ship and voyage information.



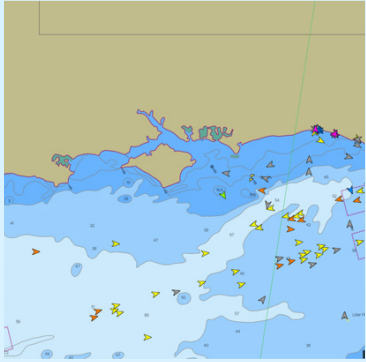
Earth Observation Service (EOS) connected to KSAT detection service. Synthetic Aperture Radar (SAR) image, Oil spill, vessel and wind detection

LOOKING FORWARD

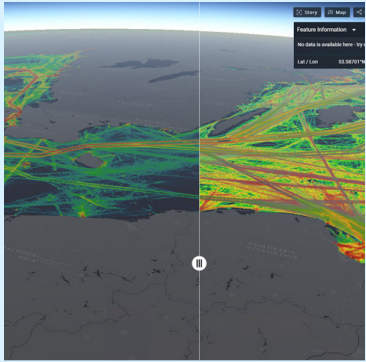
- Extend system with more analytics features
- Utilize more PaaS and SaaS and cloud native features
- Receive alerts on incidents of interest such as possible accidents or threats
- Full integration of MetOc weather forecast data



Overlays: Marine protected areas



Base map of choice. In-house S57 WMTS service



Split view functionality for comparing two data sets of historical vessel patterns



Traffic picture in 3D view.