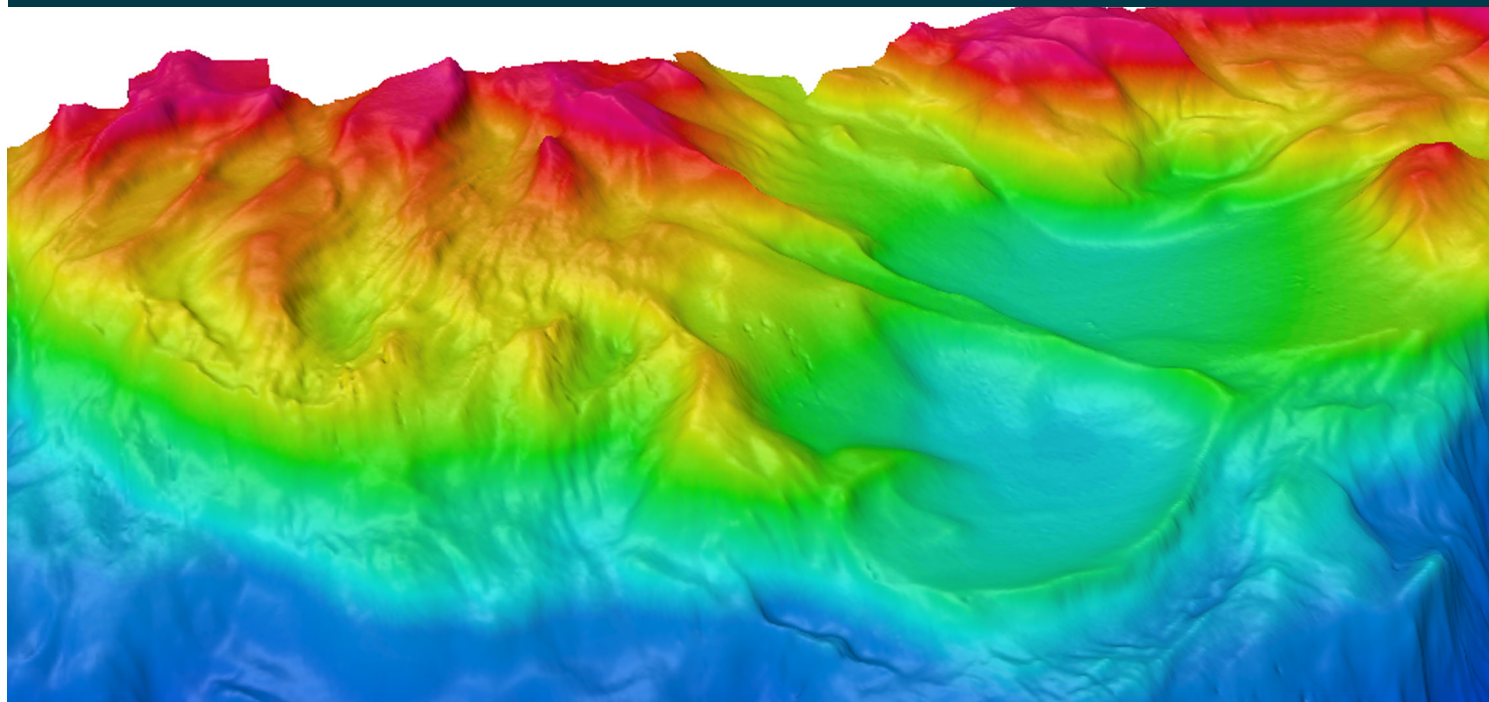


# EM<sup>®</sup> 120 AND EM<sup>®</sup> 300



KONGSBERG



392525/A 2014-04-22

## NEWS BULLETIN - END OF LIFE

---

Kongsberg Maritime aims to provide support to current and previous generations of products. However, the availability to key components is a limiting factor for support over time.

EM 120 and EM 300 have reached end of life. The critical factor is the CPU board, other part may still be available. Please contact Customer support. Customers with on-going maintenance contract agreement will still get support for their systems. Maintenance contract can be prolonged until 2015-12-31.

EM 120 as product is replaced by EM 122.

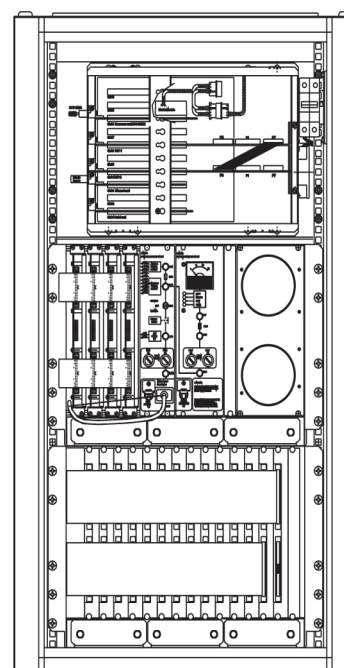
EM 300 as product is replaced by EM 302.

Transducer arrays can be replaced by EM 122 or EM 302 transducer arrays.

Reservation: Due to possible obsolescence in materials and components, performance and prices are subject to change.

*EM<sup>®</sup> is a registered trademark of Kongsberg Maritime AS in Norway and other countries.*

*Specifications subject to change without any further notice.*



Kongsberg Maritime AS  
Strandpromenaden 50  
P.O.Box 111  
N-3191 Horten  
Norway

Telephone: +47 33 02 38 00  
Telefax: +47 33 04 47 53  
www.km.kongsberg.com  
E-mail: subsea@kongsberg.com



KONGSBERG