



KONGSBERG

HiPAP 502P
502P/452P system
Instruction Manual

440337/B

November 2025 © Kongsberg Discovery AS

Document information

- **Product:** Kongsberg HiPAP 502P
- **Document:** Instruction Manual
- **Document part number:** 440337
- **Revision:** B
- **Date of issue:** 21 November 2025

This document is under configuration control at Kongsberg Discovery AS.

Copyright

The information contained in this document remains the sole property of Kongsberg Discovery AS. No part of this document may be copied or reproduced in any form or by any means, and the information contained within it is not to be communicated to a third party, without the prior written consent of Kongsberg Discovery AS.

Warning

The equipment to which this manual applies must only be used for the purpose for which it was designed. Improper use or maintenance may cause damage to the equipment and/or injury to personnel. You must be familiar with the contents of the appropriate manuals before attempting to operate or work on the equipment.

Kongsberg Discovery disclaims any responsibility for damage or injury caused by improper installation, use or maintenance of the equipment.

Disclaimer

Kongsberg Discovery AS endeavours to ensure that all information in this document is correct and fairly stated, but does not accept liability for any errors or omissions.

Support information

If you require maintenance or repair, contact Kongsberg Discovery's support organisation. You can also contact us at the following email address: support.hpr@kd.kongsberg.com. If you need information about our other products, visit <https://www.kongsberg.com/discovery/>.

Table of contents

ABOUT THIS MANUAL.....	7
KONGSBERG HIPAP 502P.....	8
System description.....	9
System diagram.....	9
System units.....	11
Computer.....	11
Transceiver.....	11
Responder Driver unit (optional).....	12
APOS - the HiPAP operator system.....	12
HiPAP 500 Portable transducer.....	12
General supply conditions.....	12
Receipt, unpacking and storage.....	13
Equipment responsibility.....	13
Support information.....	14
INSTALLATION.....	15
Installing the computer in a 19" rack.....	16
Installing the computer with a KM1000 kit.....	16
Installing the transceiver.....	17
Installing the Responder Driver unit.....	18
CABLE LAYOUT AND INTERCONNECTIONS.....	20
Cable plan.....	21
List of cables.....	22
Yard/customer responsibilities for installation of HiPAP 502P computer.....	23
Installing the topside cables.....	23
Computer rear connectors.....	24
Connecting power and ground to the transceiver.....	25
Connecting the transducer to the transceiver.....	28
Connecting the Responder Driver unit to the transceiver.....	29
Connecting the Responder Driver unit to the responder.....	31
Converting from fibre optical to electrical signal.....	32
OPERATING PROCEDURES.....	33

TECHNICAL SPECIFICATIONS.....	34
Performance specifications.....	35
Weights and outline dimensions.....	36
Power specifications.....	37
Environmental requirements.....	38
MAINTENANCE.....	40
About Electrostatic Discharge (ESD).....	41
Preventive maintenance schedule.....	43
Computer.....	43
Replacing the filter.....	43
Preventive maintenance intervals.....	45
Creating a backup.....	45
Transceiver unit.....	45
Replacing the Ethernet switch.....	45
Removing the LPT32 board.....	47
Replacing the LPT32 board.....	48
Removing a filter board.....	48
Replacing a filter board.....	49
Replacing the power module in the transceiver.....	50
Replacing the power module in the transceiver unit.....	53
Replacing the fan unit in the transceiver unit.....	53
Replacing the terminal block in the transceiver unit.....	54
Replacing a fuse in the transceiver unit.....	54
SPARE PARTS.....	56
Computer.....	57
HiPAP 500 transducer.....	57
Transceiver unit.....	58
LPT32 Transceiver board Spare part.....	58
LPT32 Filter board Spare part.....	58
Power supply Spare part.....	58
Ethernet switch Spare part.....	58
Fan unit Spare part.....	58
DRAWING FILE.....	60
Computer dimensions.....	61
Transceiver – dimensions.....	62

435248 Transceiver unit - Wiring diagram.....	63
433851 Transducer – dimensions.....	64
Transducer–minimum bending radius.....	65
433953 Sensor reference point.....	66
Responder Driver Unit dimensions.....	67
Responder driver unit, wiring diagram.....	68
Fibre to responder drive converter wiring.....	69
EQUIPMENT HANDLING.....	70
Inspection of units and transportation boxes after arrival.....	71
Unpacking standard parts and units.....	71
Specifications for storage after unpacking.....	73
Transporting Kongsberg Discovery equipment.....	74
INDEX.....	76

About this manual

This manual contains all the necessary documentation for the safe installation, operation and maintenance of the system.

Target audience

This manual is intended for all users of the system.

Online information

All end-user documentation can be downloaded from our website.

<https://www.kongsberg.com/discovery/>

Registered trademarks

Observe the registered trademarks that apply.

Windows® is a registered trademark of Microsoft Corporation in the United States and other countries.

HiPAP® is a registered trademark of Kongsberg Discovery AS in Norway and other countries.

cNODE® is a registered trademark of Kongsberg Discovery AS in Norway and other countries.

Kongsberg HiPAP 502P

Topics

[System description, page 9](#)

[System diagram, page 9](#)

[System units, page 11](#)

[General supply conditions, page 12](#)

[Support information, page 14](#)

System description

The system is used to position subsea objects in both shallow and deep water.

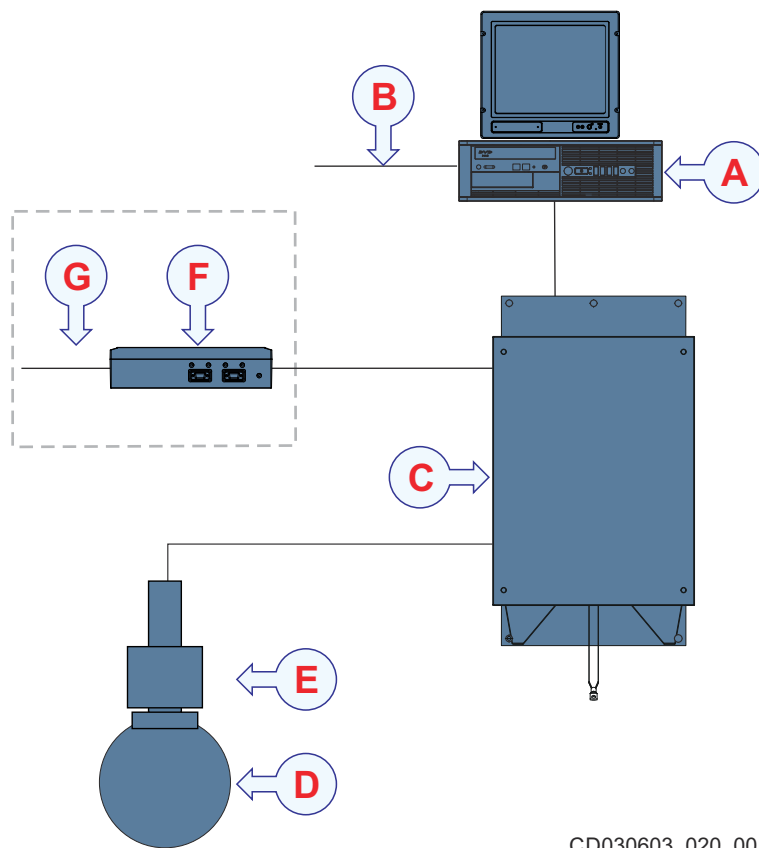
The HiPAP 502P system computes the precise position of underwater objects such as Remotely Operated Vehicles (ROVs), Autonomous Underwater Vehicles (AUVs), towed objects or fixed seabed transponders.

The system offers the user a wide range of transponder channels and cNODE transponder models.

HiPAP Portable is available in a range of models with different motion and heading sensors. Calibration of the roll and pitch alignments is not required on these models, but it may be necessary to calibrate for alignment with the ship's gyro compass. The transducers are designed to be mounted on a shaft for installation over the side or through a ship's moon pool.

System diagram

The system diagram identifies the main components of a basic HiPAP 502P system. Only the main connections between the units are shown. Detailed interface capabilities and power cables are not shown.



- A.** *Computer*
- B.** *Interfaces*
 - *Attitude (roll, pitch and heave)*
 - *Heading*
 - *Positioning systems*
- C.** *Transceiver*
- D.** *Transducer*
- E.** *Motion and heading sensor*
- F.** *Responder Driver unit (optional)*
- G.** *Responder*

System units

Computer

The HiPAP system is operated through either one or several operator stations or computers.

The computer consists of the following main units:

- Computer
- Display
- Keyboard and mouse

Computer

The computer is an 8 channel serial line model. It is built on a high performance CPU running a Microsoft Windows 7 operating system. The computer can be installed inside operator station consoles by using specific brackets or as a stand alone unit.

Display

Refer to the separate manual supplied with the display.

Keyboard and mouse

The keyboard is a USB QWERTY keyboard with US layout. The mouse is optical with cable and USB connection.

Transceiver

The transceiver transmits pulses of acoustic energy, or sound, through water and receives reflections, or echoes, of said pulses when they are reflected back from underwater objects. A pulse of acoustic energy is commonly referred to as a ping.

The transceiver is a stainless steel cabinet that contains racks holding the system electronic modules. It contains a number of circuit boards and modules. The transceiver is designed to be installed on a suitable bulkhead and are fitted with vibration/shock absorbers to reduce the effects of vessel vibrations.



Responder Driver unit (optional)

The Responder Driver unit sends responder trigger signals to responders.

The Responder Driver unit is a stand-alone unit. The unit is interfaced to the HiPAP system via the transceiver unit. APOS controls which drive is being active while the sync/timing is received from the transceiver.



APOS - the HiPAP operator system

The HiPAP system is operated from an acoustic positioning operator station (APOS). The operator station is a Windows based computer running dedicated acoustic positioning software.

The system can be operated from one single APOS station or from a wide number of APOS operator stations connected on a network.

HiPAP 500 Portable transducer

The transducer is portable and has an integrated motion sensor. Several models are available with different motion and heading sensors.

The HiPAP 500 Portable transducer has a full spherical body that includes 241 transducer elements. The HiPAP 450 has the same transducer with disabled elements. The sensors are inside the unit that is attached to the top of the transducer.



General supply conditions

General supply conditions apply to this HiPAP 502P delivery.

Related concepts

[Specifications for storage after unpacking](#), page 73

Related tasks

[Inspection of units and transportation boxes after arrival](#), page 71

[Unpacking standard parts and units](#), page 71

[Transporting Kongsberg Discovery equipment](#), page 74

Receipt, unpacking and storage

Upon accepting shipment of the equipment, the shipyard and/or the dealer must ensure that the delivery is complete and inspect each shipping container for evidence of physical damage.

If the inspection reveals any indication of crushing, dropping, immersion in water or any other form of damage, the recipient should request that a representative from the company used to transport the equipment be present during unpacking.

All equipment must be inspected for physical damage, i.e. broken controls and indicators, dents, scratches etc. during unpacking. If any damage to the equipment is discovered, the recipient must notify both the transportation company and Kongsberg Discovery so that Kongsberg Discovery can arrange for replacement or repair of the damaged equipment.

Once unpacked, the equipment must be stored in a controlled environment with an atmosphere free of corrosive agents, excessive humidity or temperature extremes.

The equipment must be covered to protect it from dust and other forms of contamination when stored.

Equipment responsibility

Unless otherwise stated in the contract, the shipyard doing the installation and/or equipment dealer becomes fully responsible for the equipment upon receipt.

The duration of responsibility cover:

- The period of time the equipment is stored locally before installation
- The entire installation process
- Commissioning
- The period of time between commissioning and the final acceptance of the equipment by the end user or owner

Unless other arrangements have been made in the contract, the Kongsberg HiPAP 502P warranty period (as specified in the contract) begins when the acceptance documents have been signed.

Support information

Should you need technical support for your HiPAP 502P system you must contact a Kongsberg Discovery office. A list of all our offices is available on our website. You can also contact our main support office in Norway.

Manuals and technical information can be downloaded from our support website.

Company name	Kongsberg Discovery AS
Address	Strandpromenaden 50, 3183 Horten, Norway
Telephone 24hr Support	+47 33 03 24 07
Website	https://www.kongsberg.com/discovery/
Support website	Product support A to Z
E-mail address	support.hpr@kd.kongsberg.com

Kongsberg Discovery support is also available in the KM-Support App. Our support application is available for free in the App Store and Google Play. Search for KM-Support. The use of our support application is free of charge. Your mobile phone provider may charge you the cost of the communication.

Installation

Topics

[Installing the computer in a 19" rack, page 16](#)

[Installing the computer with a KM1000 kit, page 16](#)

[Installing the transceiver, page 17](#)

[Installing the Responder Driver unit, page 18](#)

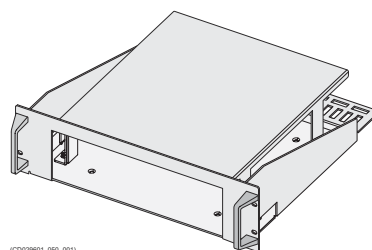
Installing the computer in a 19" rack

The computer can be installed inside a console, inside a suitable cabinet, in a 19" rack or on a desk. This procedure describes how to install the computer using rack kit 371931.

Context

Procedure

1. Remove the lid from the rack shelf.
2. Place the computer on the shelf with the front to the front of the shelf.
3. Mount the lid, and secure properly with the lock nuts and washers.
4. Mount the shelf to the rack with the cage nuts, washers and screws provided.



Further requirements

Connect the cables.

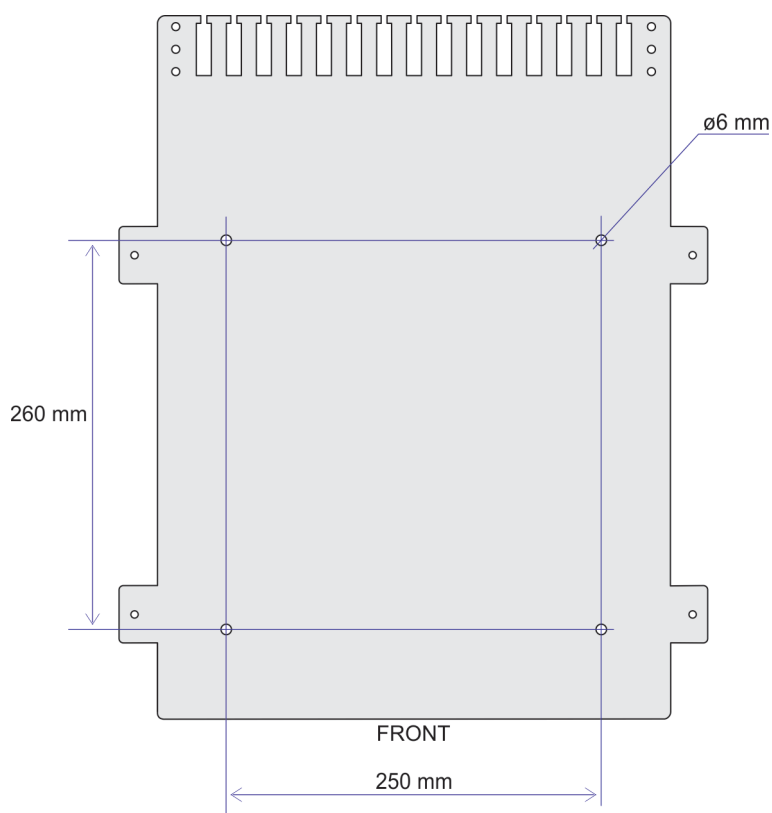
After electrical installation, secure all cables to cable fingers and holes.

Installing the computer with a KM1000 kit

The computer can be installed inside a console, inside a suitable cabinet, in a 19" rack or on a desk. This procedure describes how to install the computer using KM1000 kit (331385).

Prerequisites

Install the computer horizontal or vertical with the KM1000 kit.



Procedure

1. Prepare four holes, each for M6, following the illustration.
2. Mount the bottom plate using countersunk screws or bolts.
3. Place the computer on the bottom plate.
4. Mount the two brackets to the bottom plate using M5 locking nuts and washers.

Further requirements

Connect the cables.

After electrical installation, secure all cables to cable fingers and holes.

Installing the transceiver

The physical length of the cables limit the distance between the transducer and the transceiver.

Prerequisites

There must be a clear space of at least 500 mm in front of the unit for maintenance and 200 mm under the unit for the cables.

The transceiver unit must be mounted on a bulkhead. You do not need to remove the circuit boards or modules from the transceiver unit during the installation process. Keep the transceiver unit door on during the installation. Make sure that the unit is not exposed to dust, moisture, vibration or physical damage during the installation process.

The brackets for hanging up the transceiver is delivered with the unit.

CAUTION: _____



Do not weld in the vicinity of the transceiver unit. First weld the brackets, then bring in the transceiver unit.

Procedure

1. Measure and mark the locations where to mount the brackets.
Make sure the transceiver is at a suitable height for easy access.
2. Weld the brackets to the bulkhead.
3. Clean the welds and brackets, and paint them with an appropriate preservation medium.
4. Once the paint is dry, lift the unit into position and align the unit onto the brackets.
5. Start with the upper bracket, and bolt the shock absorbers to the brackets.

Further requirements

Connect the cables.

Related concepts

[About Electrostatic Discharge \(ESD\)](#), page 41

Installing the Responder Driver unit

The Responder Driver unit sends responder trigger signals to responders. The Responder Driver unit is a stand-alone unit that can be mounted horizontally or vertically.

Prerequisites

The unit should be located where it is most suitable for connecting the cables to the responders. This can be close to the Remote Operating Vehicle (ROV) operation room. The unit must be installed so it is easily accessible for operators to check the working condition of the responder trigger status diodes.

Procedure

1. Loosen and remove the four screws securing the lid.
2. Remove the lid and locate the four mounting holes, one in each corner.
3. Mount the responder driver unit where suitable.
The mounting screws with nuts and washers are delivered with the unit.
4. Close the unit.

Cable layout and interconnections

Topics

[Cable plan, page 21](#)

[List of cables, page 22](#)

[Yard/customer responsibilities for installation of HiPAP 502P computer, page 23](#)

[Installing the topside cables, page 23](#)

[Computer rear connectors, page 24](#)

[Connecting power and ground to the transceiver, page 25](#)

[Connecting the transducer to the transceiver, page 28](#)

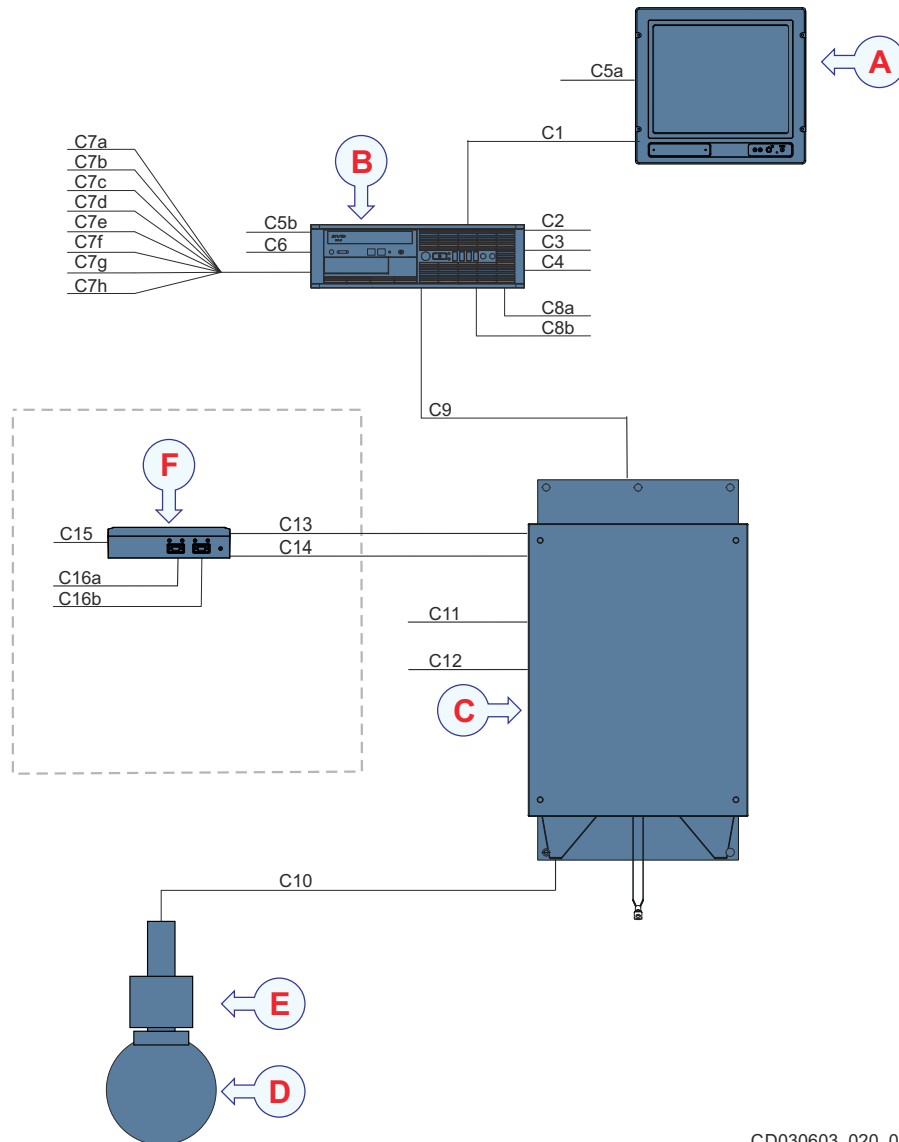
[Connecting the Responder Driver unit to the transceiver, page 29](#)

[Connecting the Responder Driver unit to the responder, page 31](#)

[Converting from fibre optical to electrical signal, page 32](#)

Cable plan

The cables are part of the delivery with the main units.



CD030603_020_002

- A.** Display
- B.** Computer
- C.** Transceiver
- D.** Transducer
- E.** Inertial Measurement Unit
- F.** Responder Driver unit (optional)

List of cables

A set of cables is required to connect the system units to each other, and to the relevant power source(s).

Cable	Type	From/To	Minimum requirements
C1	Video cable	From computer to display	
C2	Computer cable	From computer to keyboard	
C3	Computer cable	From computer to mouse (or other pointing device)	
C4	Serial cable	From computer to external device(s)	
C5 (a)	AC Power cable	From display to AC power outlet	
C5 (b)	AC Power cable	From computer to AC power outlet	
C6	Ground cable	From computer to vessel ground	
C7 (a)	Serial cable	From computer to external device(s)	Split cable 4x2x0.5 w/ screen
C7 (b)	Serial cable	From computer to external device(s)	Split cable 4x2x0.5 w/ screen
C7 (c)	Serial cable	From computer to external device(s)	Split cable 4x2x0.5 w/ screen
C7 (d)	Serial cable	From computer to external device(s)	Split cable 4x2x0.5 w/ screen
C7 (e)	Serial cable	From computer to external device(s)	Split cable 4x2x0.5 w/ screen
C7 (f)	Serial cable	From computer to external device(s)	Split cable 4x2x0.5 w/ screen
C7 (g)	Serial cable	From computer to external device(s)	Split cable 4x2x0.5 w/ screen
C7 (h)	Serial cable	From computer to external device(s)	Split cable 4x2x0.5 w/ screen
C8 (a)	Ethernet cable	From computer to local area network (LAN) A	Cat 7 * 100/ 1000 BaseTX port
C8 (b)	Ethernet cable	From computer to local area network (LAN) B	Cat 7 * 100/ 1000 BaseTX port
C9	Ethernet cable	From transceiver to computer	Cat 7 * 1000 BaseTX port
C10	Transducer cable	From transceiver to transducer	

C11	AC Power cable	From transceiver to AC power outlet	
C12	Ground cable	From transceiver to vessel ground	
C13	Ethernet cable	From transceiver to Responder Driver Unit	
C14	Serial cable	From transceiver to Responder Driver Unit	
C15	AC Power cable	From Responder Driver Unit to AC power outlet	
C16 (a)	Serial cable	From Responder Driver unit to external device(s)	
C16 (b)	Serial cable	From Responder Driver unit to external device(s)	

Yard/customer responsibilities for installation of HiPAP 502P computer

Yard/customer has to install one (1) double 115/230 VAC power sockets within 2 metres cabling distance from the computer. One (1) 115/230 VAC power cable of 2 metres length is delivered.

Yard has to install the patch panel for the system network (if delivered).

The serial number plate has to be mounted near by the computer (on the outside of the yard/customer supplied console/cabinet if the computer is mounted inside a console/cabinet).

Installing the topside cables

The topside/bridge cables include those used to connect the computer and the display to each other, to AC mains power, and to external devices. A high capacity Ethernet cable connects the computer to the transceiver.

Procedure

1. Connect the power cable from the display to the AC power outlet. (C5a)
2. Connect the power cable from the computer to the AC power outlet. (C5b)
3. Connect the cable from the computer to the keyboard. (C2)

4. Connect the cable from the computer to the mouse (or other pointing device). (C3)
5. Connect the video cable from the computer to the display. (C1)
6. Connect the ground cable from the computer to vessel ground. (C6)
The cable must be provided by the installation shipyard.
7. Connect the Ethernet cable from the computer to the local area network (LAN). (C8 a, C8 b)
8. Connect the serial cables from the computer to the external devices. (C7)
9. Connect the Ethernet cable from the computer to the transceiver. (C9)

Note: _____

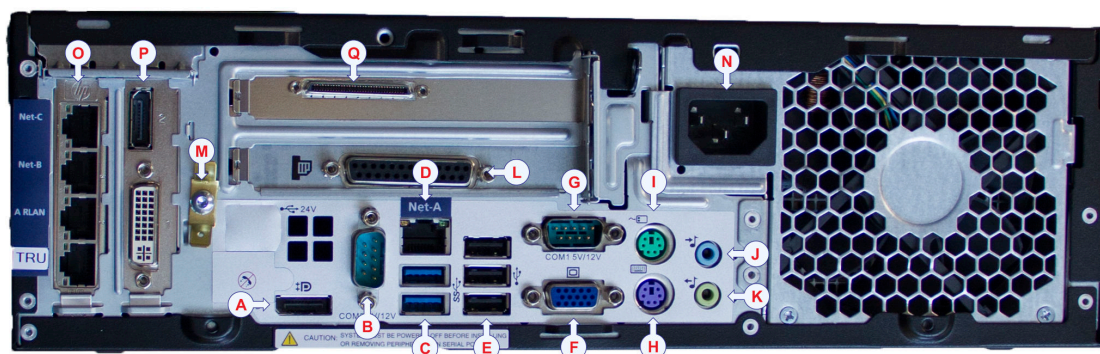


It is very important that a high-quality Ethernet cable is used.

10. Connect the ground cable from the transceiver to vessel ground. (C12)
11. Connect the power cable from the RDU to the AC power outlet. (C15)
12. Connect the cable from the transceiver to the Responder Driver Unit. (C13, C14)
13. Connect the cable from the RDU to the external device.

Computer rear connectors

The rear panel on the computer holds connectors for the various HiPAP 502P cables.



- A.** Display cable
- B.** Serial cable
- C.** USB cables
- D.** Ethernet cable

- E.** USB cables
- F.** Display cable
- G.** Serial cable
- H.** PS/2 keyboard cable
- I.** PS/2 mouse cable
- J.** Audio cable — Audio input
- K.** Audio cable — Audio output
- L.** Parallel cable
- M.** Ground cable
- N.** AC Power cable
- O.** Ethernet cables
- P.** Video cables
- Q.** Special cable

Connecting power and ground to the transceiver

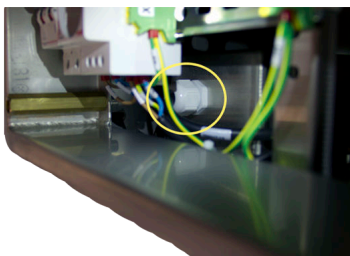
The transceiver is delivered with a power cable for test use only.

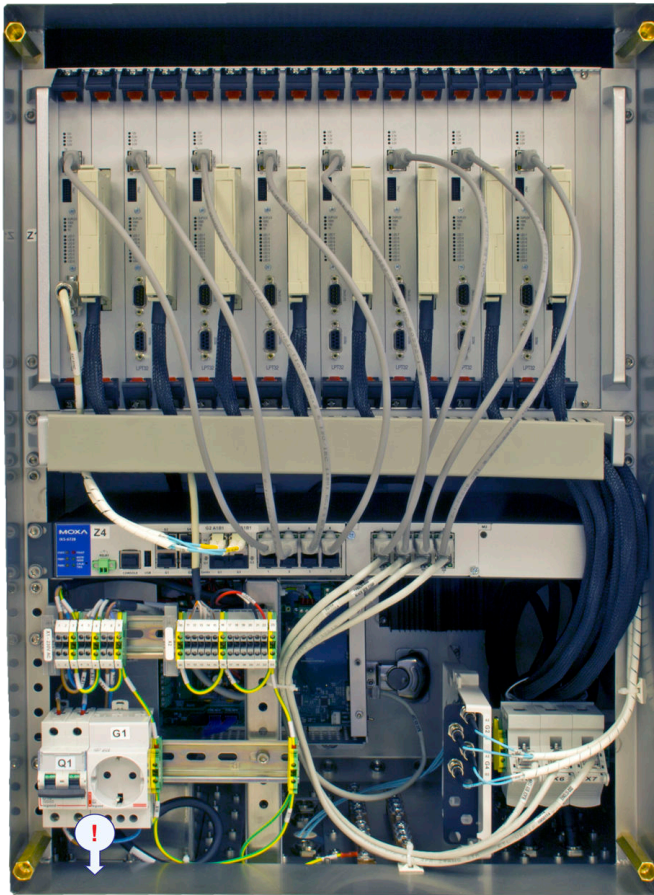
Prerequisites

These cables must be provided by the installation shipyard.

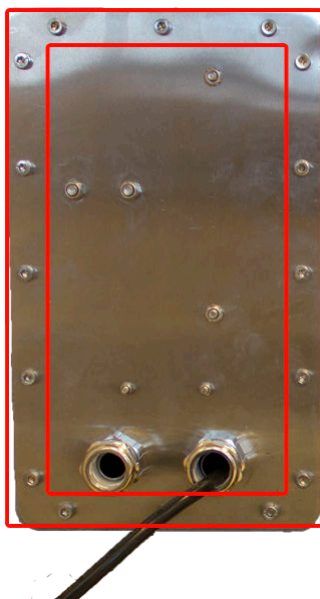
Procedure

1. Manufacture the cable according to the minimum requirements provided.
2. Connect the power cable from the transceiver to the AC power outlet.
3. Loosen the cable gland on the cable to the filter. The top part needs to be loosened, not the nut.

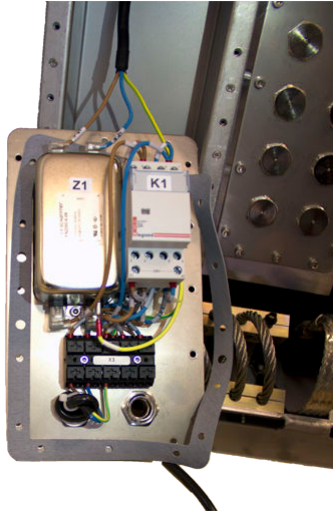




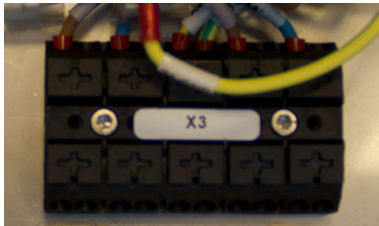
4. Remove the 16 screws on the power box underneath the transceiver cabinet.



Take care not to lose the gasket around the box.

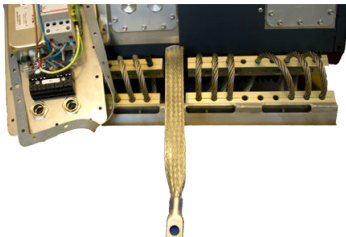


5. Remove the test cable.
6. Enter the cable through the gland, connecting it as shown in the wiring diagram and the cable description.



You can connect two power cables, for redundancy.

7. Block the cable gland not in use, if there is no redundancy in the power supply. Use a F/M20 cable gland blind plug.
8. Screw the power box back on, with the gasket fitted.
9. Fasten the cable glands, both the one loosened and the those for the power cables.
10. Connect the ground cable from the transceiver to vessel ground.



Connecting the transducer to the transceiver

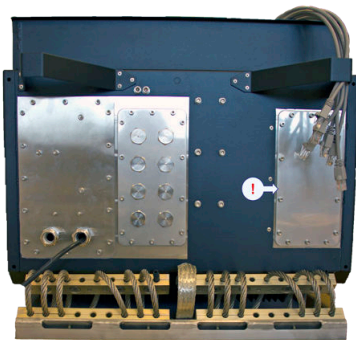
The cable is physically connected to the transducer.

Prerequisites

Make sure this cable moves as smooth as possible without any unnecessary wear.

Procedure

1. Remove the blind cover from underneath the transceiver on the right side, keeping the screws for the cover and EMC gasket.



2. Insert the cable and connectors.



3. Fasten the cover.
4. Connect the individual transducer cables to the correct circuit board.
The connectors are numbered. Circuit board 1 is to the left following in sequence to board number 8 to the far right.

5. Bundle the cables to the bracket inside the transceiver unit.



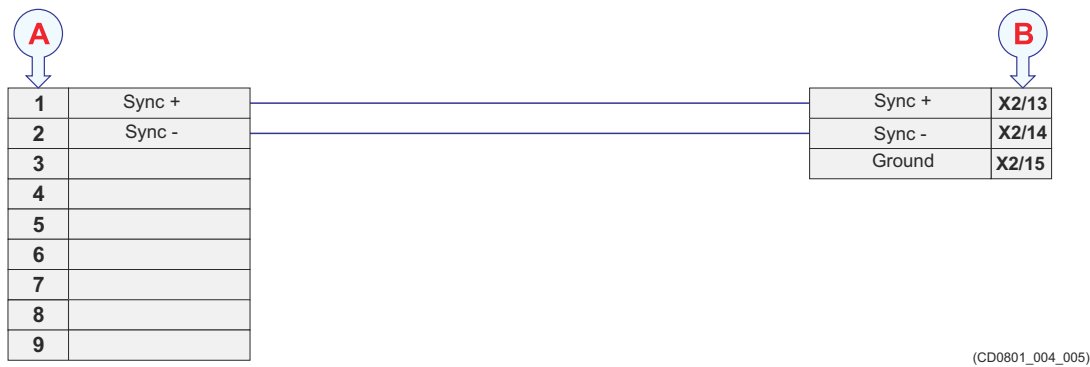
6. Connect the power cable to the X2 +48 V terminal block according to the wiring diagram.
7. Connect the Ethernet cable to the MOXA switch.
8. Close the door.

Connecting the Responder Driver unit to the transceiver

The synchronization cable for the Responder Driver unit is supplied by the yard.

Prerequisites

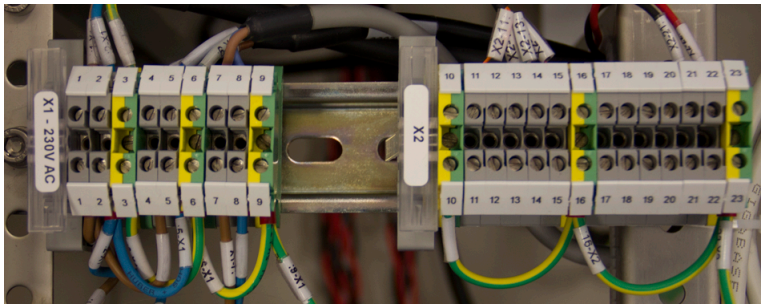
The 9-pin D-sub plug is delivered with the Responder Driver Unit.



- A.** Responder Driver unit, **Input Responder Sync**
- B.** Transceiver Unit, X2

Procedure

1. Select the cable according to the specification and cut it to the needed length.
2. Install the 9-pin D-sub plug to the cable.
3. Support the cable between the transceiver and the Responder Driver Unit, making sure the D-sub connector ends at the Responder Driver Unit.
4. Remove one of the blind plugs in the bottom of the cabinet.
5. Insert the cable through one of the cable glands delivered with the transceiver cabinet.
6. Connect the wires to terminal block X2 according to the cable drawing or the wiring diagram.



7. Provide a service loop on the cable and fasten the cable gland.
8. Connect the 9-pin D-sub plug to the **Input Responder Sync** connector on the Responder Driver Unit.

Connecting the Responder Driver unit to the responder

The Responder Driver unit sends responder trigger signals to responders. Kongsberg does not supply the cables required to connect the units. The installing shipyard must supply the cables required to connect the units.

Prerequisites

The signal cables to the responder consists of 2 dsub connectors for electrical signals for responders 1–4 and four connectors for fibre optic connection to responders 5–8.

Pinout Responder drive signal 1 to 4 for Responder Drive Unit	
Responder 1	9p D-sub
Power 1 +24V	1
Drive signal 1	2
Ground	3
Responder 2	9p D-sub
Power 2 +24V	6
Drive signal 2	7
Ground	8
Responder 3	9p D-sub
Power 3 +24V	1
Drive signal 1	2
Ground	3
Responder 4	9p D-sub
Power 4 +24V	6
Drive signal 2	7
Ground	8

CD0801_003_004

Procedure

1. Manufacture the cable.
2. Secure the cable from the responder driver unit to the responder.
Use a fibre to electrical signal converter if necessary.
3. Connect the cable.

Converting from fibre optical to electrical signal

The converter works both ways and can be used to create an optical isolation between high voltage equipment and a transceiver.

Context

You need one kit for each responder signal. The connectors are provided to make the cable as long as it needs to be.

Procedure

1. Produce the cable from the responder driver unit to the converter according to drawing 308850 in the drawing file chapter. The connectors are part of the converter kit.
2. Secure the cable and connect it.
3. For an optical isolation, produce the cable from the converter to the ROV according to drawing 308850 in the drawing file chapter. This connector is also provided.
4. Secure the cable and connect it.
5. Continue with fibre optical or electrical cables as needed.

Operating procedures

See APOS online help.

Technical specifications

Topics

[Performance specifications, page 35](#)

[Weights and outline dimensions, page 36](#)

[Power specifications, page 37](#)

[Environmental requirements, page 38](#)

Performance specifications

These performance specifications summarize the main functional and operational characteristics of the HiPAP 502P 502P/452P system.

	S/N [dB rel. 1μPa]		
	20	10	0
Angular Accuracy (X & Y direction) [°]	0.06	0.1	0.3
Position Accuracy [°] (At 0° elevation)	0.08	0.14	0.42
Range Accuracy [m]	0.1	0.1	0.15
Cymbal Range Accuracy [m]	0.02	0.02	0.02
Receiver beam [°]	10		
Coverage [°]	±100		

Angular Accuracy (X & Y direction) [°] is the accuracy in each of the x and y axes.

Position Accuracy [°] is the combined accuracy of both axes ($\sqrt{x^2 + y^2}$).

Transceiver unit

The HiPAP transceiver accepts the following input formats:

Gyro

- NMEA \$**HDT
- NMEA \$**VHW
- Yokogawa \$**HRC
- SKR
- STL

VRU/Attitude

- EM 3000
- \$SPSXN,10
- \$SPSXN,23

- IxSea Octans TAH (\$PHOCT) R-P-H (UTC)
- IxSea Octans \$PHTRO (roll and pitch)
- Ixsea Octans \$PHLIN (Heave only)

For attitude data, the data rate should be at least 25 Hz, 100 Hz is recommended.

Data input can be either serial line RS-232 / RS-422 or Ethernet UDP.

Serial line speeds can be from 1200 baud up to 115200 baud, 1 or 2 stop bits, 7/8 bit data and parity none, even or odd.

Weights and outline dimensions

These weights and outline dimension characteristics summarize the physical properties of the HiPAP 502P system.

Display

- **Model:** Hatteland Display JH19T14
- **Outline dimensions:**
 - **Depth:** 82 mm
 - **Width:** 483 mm
 - **Height:** 444 mm
- **Weight:** 11.5 kg

Computer

- **Model:** MP5810
- **Outline dimensions:**
 - **Depth:** 379 mm
 - **Width:** 338 mm
 - **Height:** 100 mm
- **Weight:** 7 kg

Transceiver Unit

- **Model:** x82
- **Outline dimensions:**
 - **Depth:** 525 mm

- **Width:** 909 mm
- **Height:** 548 mm
- **Weight:** 72 kg

Responder Driver unit

- **Outline dimensions:**
 - **Depth:** 200 mm
 - **Width:** 280 mm
 - **Height:** 73 mm
- **Weight:** 2.8 kg

Transducer

- **Model:** HiPAP 500 Portable transducer
- **Outline dimensions:**
 - **Diameter:** 392 mm
 - **Height:** 749 mm
- **Weight:** 93 kg + cables

Related references

[Computer dimensions](#), page 61

[Transceiver – dimensions](#), page 62

[Responder Driver Unit dimensions](#), page 67

Power specifications

These power characteristics summarize the supply power requirements for the HiPAP 502P system.

Computer

- **Model:** MP5810
- **Voltage requirement:** 110/220 VAC , 50/60 Hz autosensing, 240 W 85+ autosensing power
- **Maximum voltage deviation:** 15%
- **Maximum current draw:** 5 A
- **Normal current draw:** 0.5 A

- **Power consumption:** 150 W

Transceiver Unit

- **Make and model:** x82
- **Voltage requirement:** 115/230 VAC — 50/60 Hz
- **Immunity:** Fast transient burst EN61000-4-4 (4kV)
- **Maximum voltage deviation:** 15 %
- **Maximum current draw:** 40 A
- **Normal current draw:** 0.8 A

Responder Driver unit

- **Voltage requirement:** 85 to 264 VAC — 40 to 440 Hz
- **Maximum inrush:** 5 A AC
- **Maximum current draw:** 0.4 A
- **Normal current draw:** 0.06 A
- **Power consumption:** 15 W

Environmental requirements

These environmental specifications summarize the temperature and humidity requirements for the HiPAP 502P 502P/452P system.

Computer

- **Model:** MP5810
- **Operating temperature:** 0 to +55 °C
- **Storage temperature:** -20 °C – 70 °C
- **Relative humidity:** 5 – 95% (relative non-condensing)

Transceiver Unit

- **Ingress protection (IP) code:** IP44
- **Vibration:** 5 to 100 Hz
- **Excitation level:** 5-13.2 Hz \pm 1.5 mm, 13.2-100 Hz 1 g
- **Operating temperature:** 0 to +55 °C
- **Storage temperature:** -20 to 65 °C

- **Relative humidity:** 15 to 95% relative non-condensing

Responder Driver unit

- **Ingress protection (IP) code:** IP44
- **Vibration:** 5 to 100 Hz
- **Excitation level:** 5 to 13.2 Hz ± 1.5 mm, 13.2 to 100 Hz 1 g
- **Operating temperature:** 0 to +55 °C
- **Storage temperature:** -40 to 75 °C
- **Relative humidity:** 15 to 95% relative non-condensing

Maintenance

Topics

[About Electrostatic Discharge \(ESD\), page 41](#)

[Preventive maintenance schedule, page 43](#)

[Computer, page 43](#)

[Transceiver unit, page 45](#)

About Electrostatic Discharge (ESD)

Electrostatic discharge (ESD) is the sudden flow of electricity between two electrically charged objects. Contact, an electrical short, or a dielectric breakdown can cause such a flow of electricity. Electrostatic discharge (ESD) can cause serious damage to printed circuit boards and electronic modules.

Beware of Electrostatic Discharge (ESD)!

Note:



When you handle electronic circuit boards and modules, you must beware of the dangers of electrostatic discharge (ESD), both to yourself and to the equipment. In order to ensure safe transport and storage, circuit boards and other electronic units will always be wrapped in a clear plastic protective bag, and the bag will be sealed.

For correct and safe handling of printed circuit boards and electronic modules, you need a suitable working area. The working area must be covered by an approved conductive service mat that has a resistance of between 50 k Ω and 2 M Ω , and is connected directly to a reliable earth point via its earthing cord. You - and all other service personnel involved - must wear a wristband in direct contact with the skin. The wristband must be electrically connected to the service mat.

What is Electrostatic Discharge (ESD)?

Electrostatic Discharge (ESD) is the transfer of an electrostatic charge between two bodies at different electrostatic levels, caused either by direct contact or induction by an electrostatic field. The passing of a charge through an electronic device can cause local overheating, and it can also "puncture" insulating layers within the structure of the device. This may deposit a conductive residue of the vaporized metal on the device, and thus create a short circuit. Electrostatic Discharge (ESD) may result in a failures or degraded performance of the device.

ESD can create spectacular electric sparks (thunder and lightning is a large-scale ESD event), but also less dramatic forms which may be neither seen nor heard, yet still be large enough to cause damage to sensitive electronic devices. Electric sparks require a field strength above approximately 4 kV/cm in air, as notably occurs in lightning strikes. Other forms of ESD include corona discharge from sharp electrodes and brush discharge from blunt electrodes.

ESD can cause a range of harmful effects of importance in industry, including gas, fuel vapour and coal dust explosions, as well as failure of solid state electronics components such as integrated circuits. These can suffer permanent damage when subjected to high voltages. Electronics manufacturers therefore establish electrostatic protective areas free of static, using measures to prevent charging, such as avoiding highly charging

materials and measures to remove static such as grounding human workers, providing antistatic devices, and controlling humidity.

http://en.wikipedia.org/wiki/Electrostatic_discharge (January 2014)

Precautions to prevent Electrostatic Discharge (ESD)

Sensitive printed circuit boards and electronic modules must always be transported and stored in protective antistatic packing bags. It is also important that they are not transported or stored close to strong electrostatic, electromagnetic or radioactive fields. If it is necessary to open and touch the printed circuit board or module inside the protective bag, the following precautions must be taken.

1. For correct and safe handling of printed circuit boards and electronic modules, you need a suitable working area. The working area must be covered by an approved conductive service mat that has a resistance of between 50 k Ω and 2 M Ω , and is connected directly to a reliable earth point via its earthing cord.
2. You - and all other service personnel involved - must wear a wristband in direct contact with the skin. The wristband must be electrically connected to the service mat.
3. Printed circuit boards and electronic modules must be placed on the conductive service mat during installation and maintenance operations.
4. If, for any reason, it is necessary to move the circuit board from the conductive service mat, it must be placed in an approved antistatic transportation container (for example a static shielding bag) before transportation.
5. During installation and servicing, all electrical equipment (for example soldering irons and test equipment) must be earthed.

Preventive maintenance schedule

Periodic preventive maintenance is essential to preserve reliability and ensure safe operation throughout the system's service life. The preventive maintenance activity is broken down into specific tasks and the tasks are organized periodically in a *preventive maintenance schedule*. The preventive maintenance schedule for the system is as follows:

- Whenever the system has been in use
 - Clean the transducer and remove marine growth.
 - Clean the repeater unit.
 - Lubricate the connectors.
 - Make sure that all the bolts are tightened.
 - Check that the equipment is intact, undamaged and in full working order.
- Every month
 - Dust the units.
 - Make a backup of the APOS configuration.
- Every six months
 - Check all cable connections.
 - Check that the equipment is intact, undamaged and in full working order.

Computer

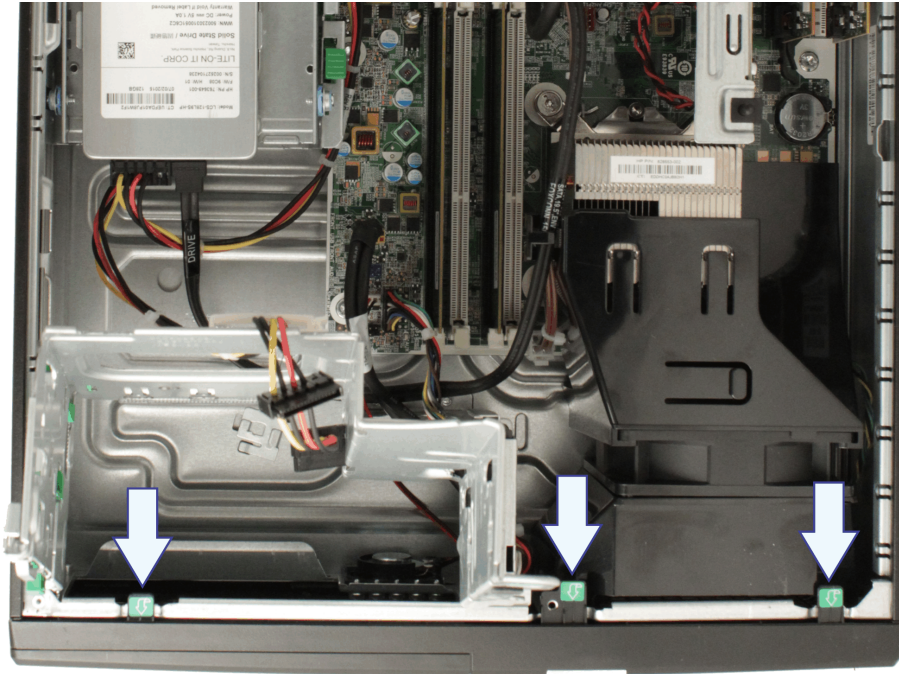
Replacing the filter

Prerequisites

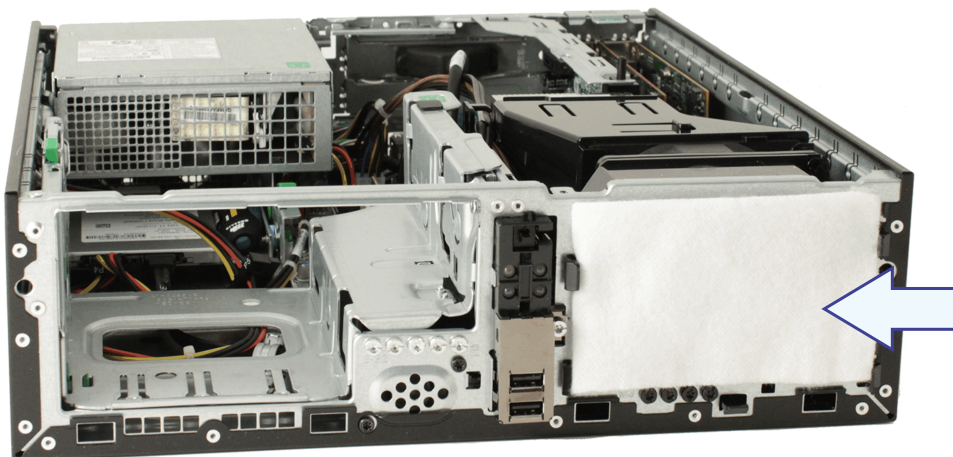
- Turn off the power to the computer.
- Make sure that the new filter is identical to the one listed in the recommended spare part list.
- Remove the computer from the damper kit
- Remove the cabinet lid from the computer.

Procedure

1. Press the three green handles to remove the front cover.



2. Carefully remove the old filter inside.



3. Install the new dust filter.
4. Put the front cover back in place.
5. Put the cabinet lid back in place.

Preventive maintenance intervals

Note: _____



These procedures should be performed on each HiPAP in the system. Local evaluations should be made to determine site-specific maintenance intervals.

ACTION	INTERVAL RECOMMENDED
Clean all filters for units equipped with fans.	Every week.
Clean cabinet surface.	Every month.
Check for loose connectors and wires.	Every six months.

Creating a backup

For backup procedures, refer to the backup files document, doc. no. 476331. This is a separate manual supplied with the system delivery.

Backup all operator stations regularly (1-3 months), and whenever the configuration and/or user settings of the operator stations are updated.

Important: _____

Always do a backup after a software update.

Transceiver unit

Replacing the Ethernet switch

This procedure is for the switch inside the transceiver.

Procedure

1. Turn off the transceiver.
2. Unplug the cables connected to the Ethernet switch.

3. Cut the strips to loosen the transducer cables.



4. Loosen the mounting screws and remove the unit.
5. Unplug the connectors at the back of the unit.
6. Replace the unit.
7. Reconnect all cables.
8. Bundle the cables to the bracket inside the transceiver unit.
9. Turn on the transceiver.

Removing the LPT32 board

The boards are located inside the unit.

Context

CAUTION:



Be careful not to touch the sides of the circuit boards and filter boards as the capacitors might still be charged.

Procedure

1. Turn off the transceiver.
2. Make sure the light on the power unit inside goes from **blue to red/off** before touching any of the boards.
3. Locate the faulty board.
4. Remove the cable connected to the front of the board.
5. Loosen the screws. (A)
6. Loosen the circuit board by pushing the two red locking devices on the handles.(B)
7. To loosen the board, push the top ejector up, and the bottom ejector down. (C)
8. Grab the handles and pull the circuit board straight out.
9. Place the circuit board inside an anti-static plastic bag. Place it on a clean and stable workbench.



Further requirements

To return the circuit board for repair or replacement, observe the relevant handling instructions.

Follow the procedure in reverse to install the new board.

Related concepts

[About Electrostatic Discharge \(ESD\)](#), page 41

Replacing the LPT32 board

The boards are located inside the unit.

Context

CAUTION: _____



Be careful not to touch the sides of the circuit boards and filter boards as the capacitors might still be charged.

Procedure

1. Grab the board ejectors with both hands, and push the board in while keeping it as straight as possible.
2. Lock the board in place by pulling the top locking handle down, and the bottom locking handle up.
3. Fasten the screws.
4. Insert the front mounted Ethernet cable and other front mounted cables.
5. Once all the boards are in position, re-apply power as required.
6. Close the transceiver unit front door.

Related concepts

[About Electrostatic Discharge \(ESD\)](#), page 41



Removing a filter board

The boards are located inside the unit.

Context

CAUTION: _____



Be careful not to touch the sides of the circuit boards and filter boards as the capacitors might still be charged.

Procedure

1. Turn off the transceiver.
2. Make sure the light on the power unit inside goes from **blue to red/off** before touching any of the boards.
3. Locate the faulty board.
4. Remove the cable connected to the front of the board.
5. Loosen the screws.
6. Loosen the circuit board by pushing the two red locking devices on the handles.
7. To loosen the board, push the top ejector up, and the bottom ejector down.
8. Grab the handles and pull the circuit board straight out.
9. Place the circuit board inside an anti-static plastic bag. Place it on a clean and stable workbench.

Further requirements

To return the circuit board for repair or replacement, observe the relevant handling instructions.

Follow the procedure in reverse to install the new board.

Related concepts

[About Electrostatic Discharge \(ESD\)](#), page 41

Replacing a filter board

The filter boards are located inside the transceiver unit.

Context

Note: _____



Be careful not to touch the sides of the circuit boards and filter boards as the capacitors might still be charged.

Procedure

1. Grab the board ejectors with both hands, and push the board in while keeping it as straight as possible.
2. Lock the board in place by pulling the top locking handle down, and the bottom locking handle up.
3. Fasten the screws.

4. Insert the front mounted Ethernet cable and other front mounted cables.
5. Once all the boards are in position, re-apply power as required.
6. Close the transceiver unit front door.

Related concepts

[About Electrostatic Discharge \(ESD\)](#), page 41

Replacing the power module in the transceiver

The power module is located in the back of the transceiver cabinet.

Prerequisites

Older models of x82 have a smaller distance between the power module and the overlying modules. For these models you have to remove the fibre optic splice box to remove the power module.

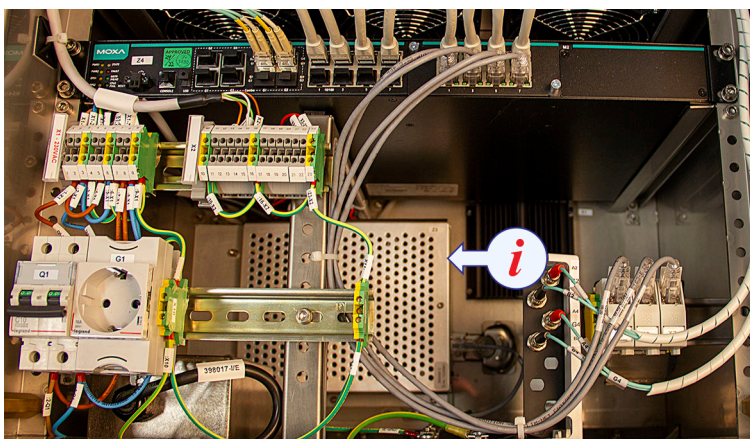
Tip: _____



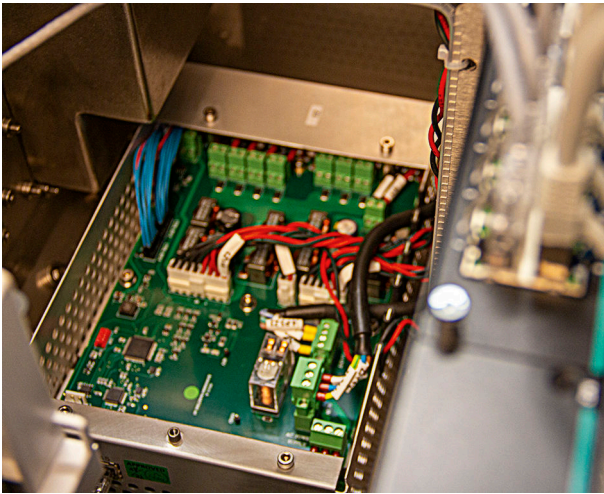
The fibre optic cables are fragile, handle them with care.

Procedure

1. Turn off the transceiver with the main switch.
2. Turn off the power supply to the transceiver.
3. Locate the power module in the back of the transceiver.

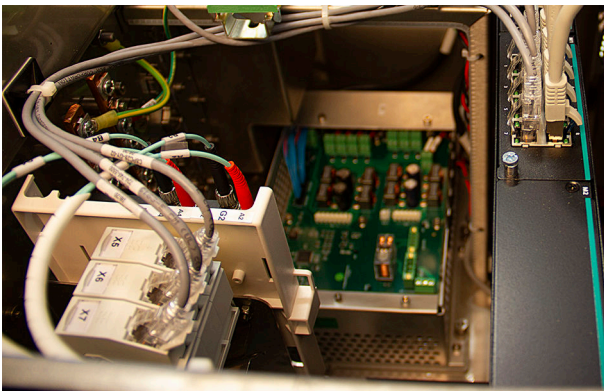


4. Remove the cover.



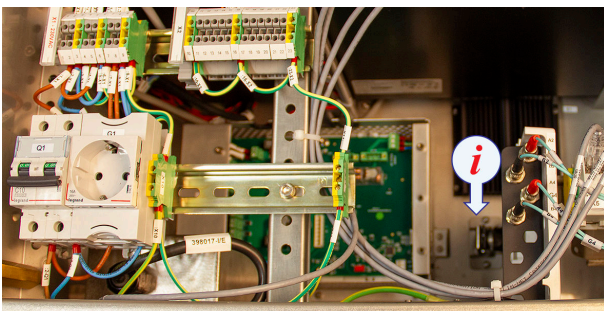
Notice where the cables are, to make it easy to connect the new unit.

5. Disconnect the cables to the power module.

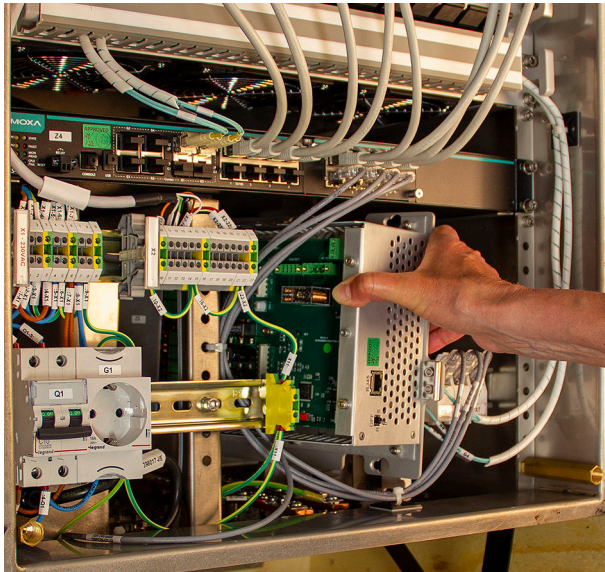


Make sure the cables are tucked in at the sides, so they won't be damaged when the module is removed.

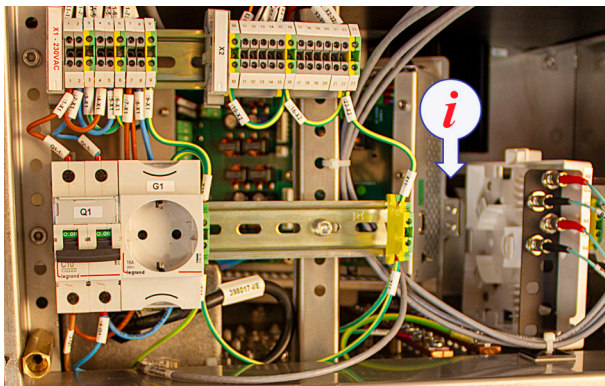
6. Open the lock on the right hand side of the power unit and turn it 180° counter-clockwise to release the power unit.



7. Slide the power unit to the left and pull out the power module.



8. Older models of the x82 transceiver will not get past the fibre optic splice box.



For these models you have to remove the fibre optic splice box to remove the power module.

CAUTION: _____



The fibre optic cables are fragile, handle them with care.

9. Insert the new power module the same way.

Related concepts

[About Electrostatic Discharge \(ESD\)](#), page 41

Replacing the power module in the transceiver unit

The power module is located in back of the transceiver unit.

Prerequisites

Removing the Moxa switch makes the job of replacing the power unit easier.

Procedure

1. Insert the new power unit through the same gap in the Transceiver unit.
2. Place the power unit on the six nuts on the back wall of the Transceiver unit.
3. Slide the power unit to the right and secure the power unit by turning the flap on the right side 180° and close the flap.
4. Reconnect all cable to the power unit.
5. Reattach the cover and secure with the screw.

Replacing the fan unit in the transceiver unit

The fan unit is located below the circuit boards inside the transceiver unit.

Prerequisites

Removing some of the circuit boards at the left side makes the job of replacing the fan unit easier.

Procedure

1. Switch off the transceiver unit using the Main switch.
2. Remove the four screws in the front.
3. Unplug the power cable by pressing the IEC lock on the connector at the back of the fan unit.
4. Remove the fan unit.
5. Replace the old fan unit with the new one.
6. Plug the power cable back in at the back of the fan unit.
7. Screw in the four screws in the front.
8. Switch on the transceiver unit using the Main switch.

Replacing the terminal block in the transceiver unit

The Ethernet switch/Converter is located below the PCB rack in the transceiver unit.

Procedure

1. Switch off the transceiver unit using the Main switch.
2. Remove the power cables in to the cabinet.
3. Disconnect the terminal block module.
4. The module is snapped on. To remove it, pull down the lock-tab in the lower end, and pull it directly out from the support rail.
5. Align the new module on the support rail.
6. Press the module and pull down the lock-tab until it snaps into place.

Replacing a fuse in the transceiver unit

The transceiver unit is powered via a Main switch mounted on the support rail at the bottom of the transceiver unit.

Context

The fuse is a circuit breaker, and it trips at 25 A.

Note: _____



Always use the correct size and type of fuse. Irreparable damage may be caused to the transceiver unit if the wrong fuse (or anything else) is used.

Procedure

1. Switch off all external units and systems connected to the HiPAP system.
2. Remove the transceiver unit front door.
3. Switch off power to the unit using the Main switch.
4. Replace the blown fuse(s) with a fuse with correct size and type.
5. If the Main switch has tripped, reset the switch.

Note: _____



Release the switch immediately. It is made so it can trip again if necessary.

6. Turn on the power to the HiPAP system and then to the other external units.

Note: _____



If, when a fuse is replaced, it blows or trips again when power is switched on to the system, a more serious fault exists. Do not replace the fuse(s) a second time until the fault has been found and corrected.

7. Close the transceiver unit front door.

Spare parts

Topics

[Computer, page 57](#)

[HiPAP 500 transducer, page 57](#)

[Transceiver unit, page 58](#)

[LPT32 Transceiver board Spare part, page 58](#)

[LPT32 Filter board Spare part, page 58](#)

[Power supply Spare part, page 58](#)

[Ethernet switch Spare part, page 58](#)

[Fan unit Spare part, page 58](#)

Computer

Computer

- **Part name:** MP5810
- **Part number:** 413084

HiPAP 500 transducer



- **Part name:** Transducer HiPAP 500
- **Part number:** TDH-089996

The transducer comes with:

- 3 O-rings 180x4 mm
- 2 O-rings 99.1x5.7 mm
- 4 M8x20 bolts
- 12 M8x35 bolts
- 12 M8 lock washers

Transceiver unit

- **Part name:** Transceiver unit x82–M8P
- **Part number:** 435243



LPT32 Transceiver board Spare part

- **Part name:** LPT32 Transceiver board
- Part number:** 367861

LPT32 Filter board Spare part

- **Part name:** LPT32 Filter board
- Part number:** 394739

Power supply Spare part

- **Part name:** Power supply transceiver
- Part number:** 427030

Ethernet switch Spare part

- **Part name:** Ethernet switch transceiver
- Part number:** 391184

Fan unit Spare part

- **Part name:** Fan unit transceiver

Part number: 397740

Drawing file

Topics

[Computer dimensions, page 61](#)

[Transceiver – dimensions, page 62](#)

[435248 Transceiver unit - Wiring diagram, page 63](#)

[433851 Transducer – dimensions, page 64](#)

[Transducer–minimum bending radius, page 65](#)

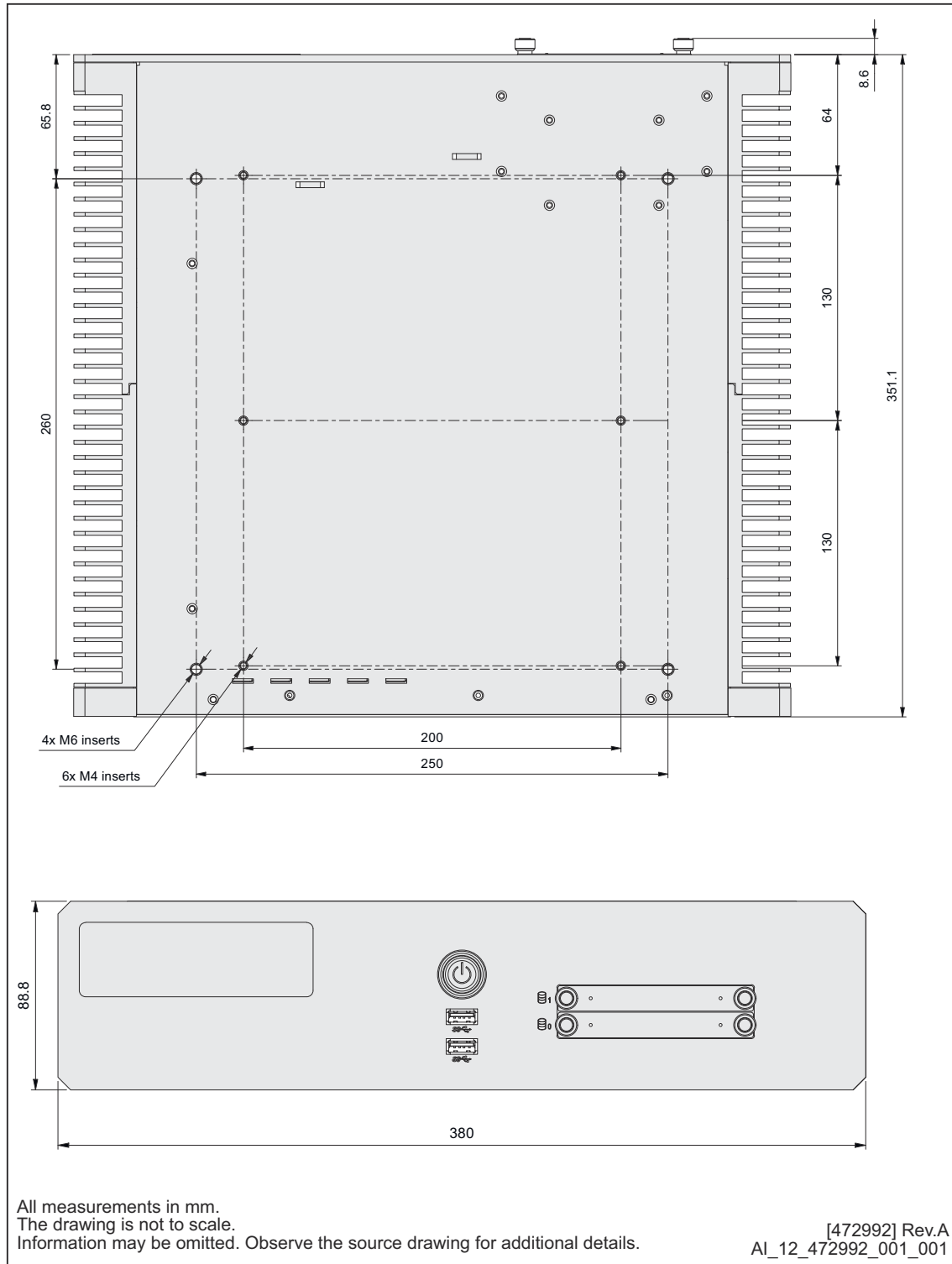
[433953 Sensor reference point, page 66](#)

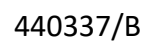
[Responder Driver Unit dimensions, page 67](#)

[Responder driver unit, wiring diagram, page 68](#)

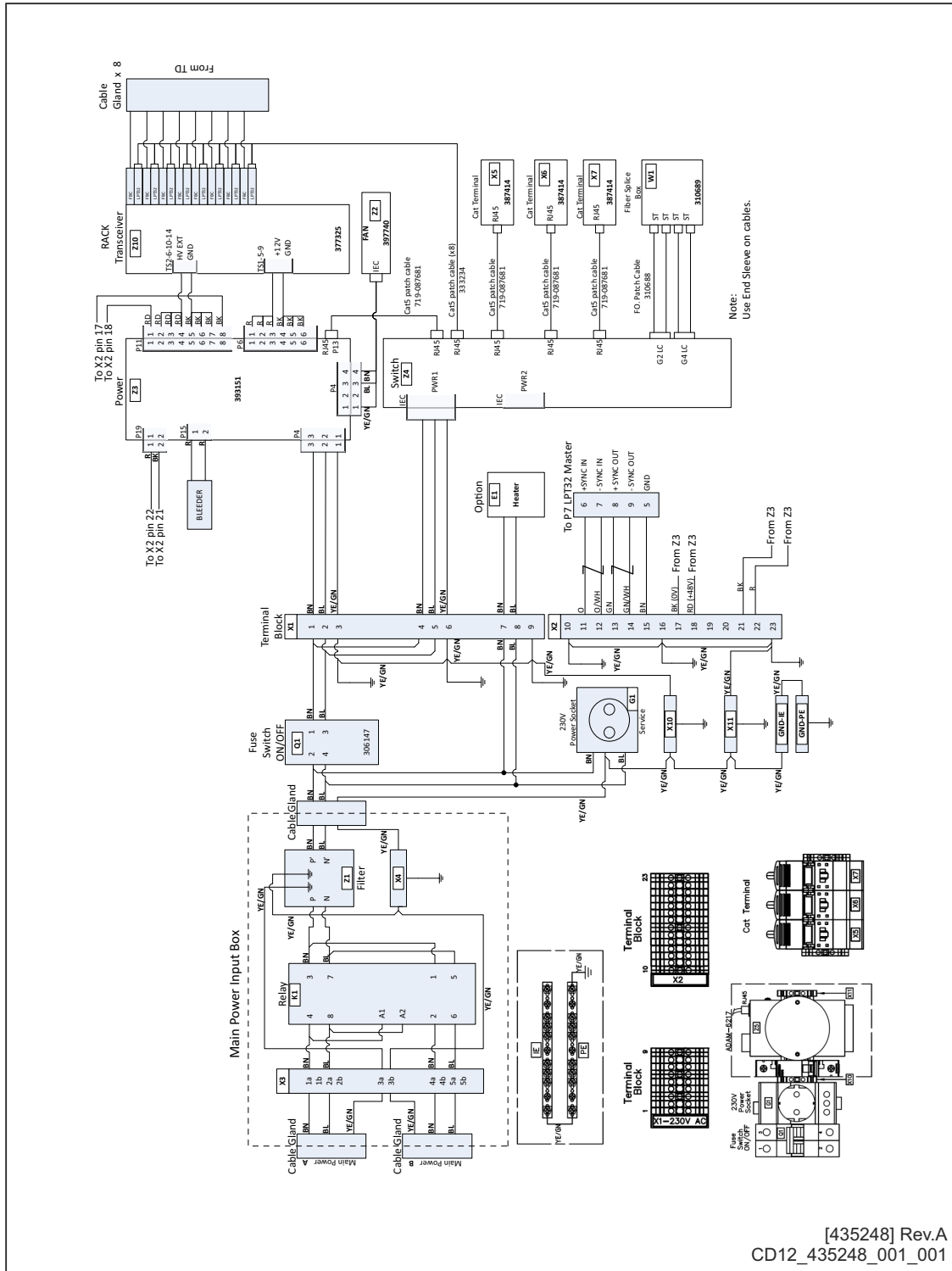
[Fibre to responder drive converter wiring, page 69](#)

Computer dimensions

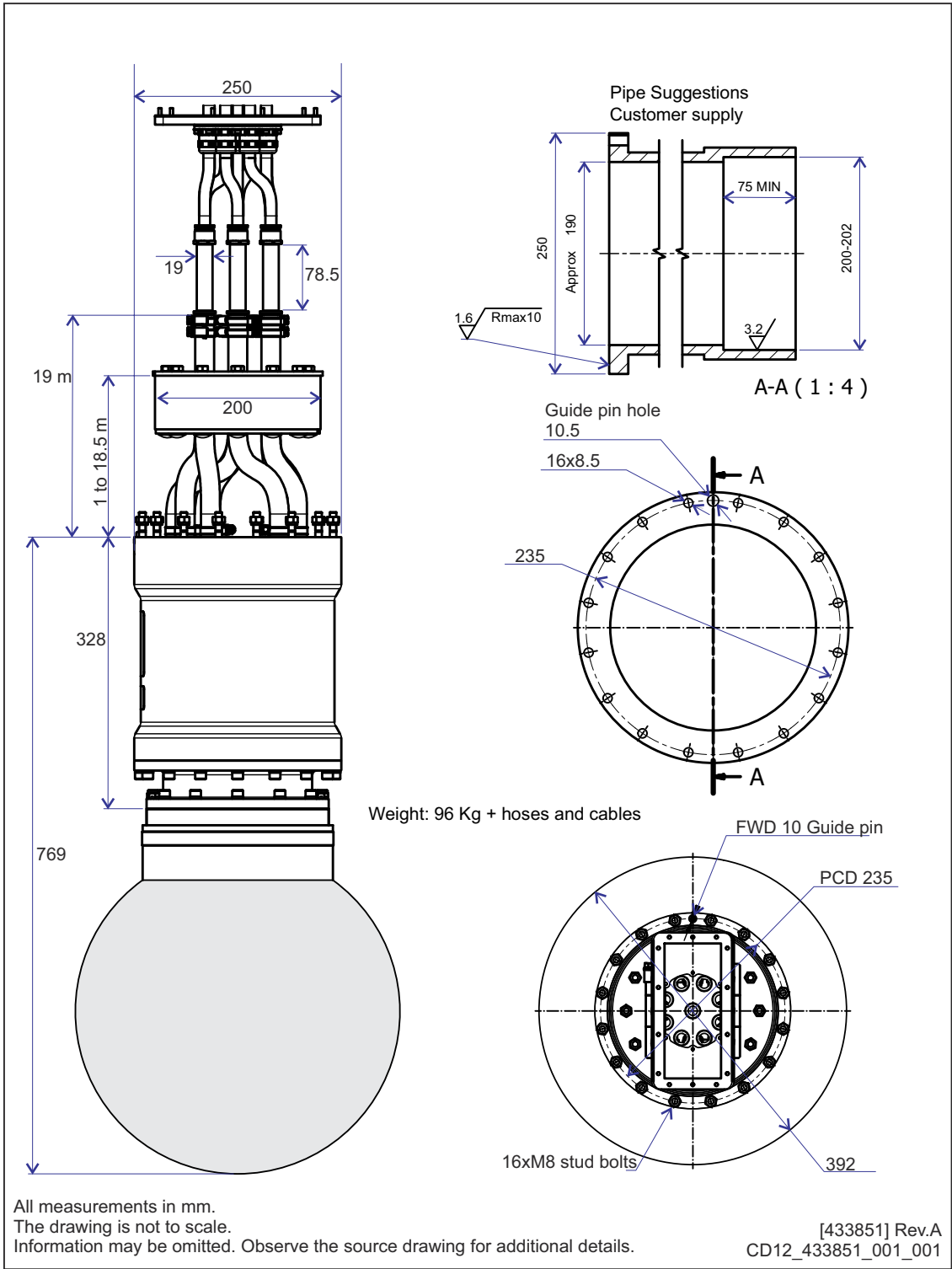




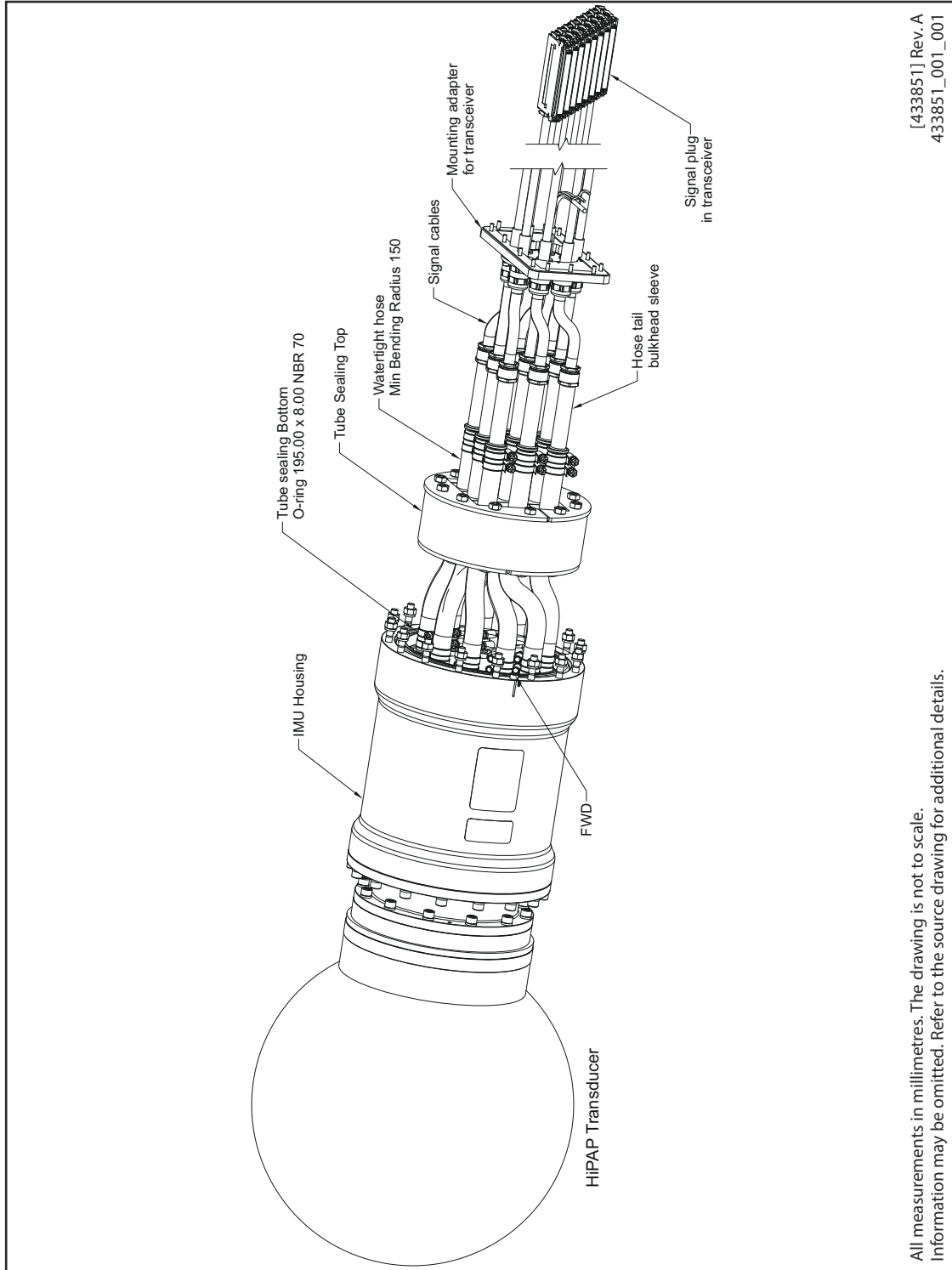
435248 Transceiver unit - Wiring diagram



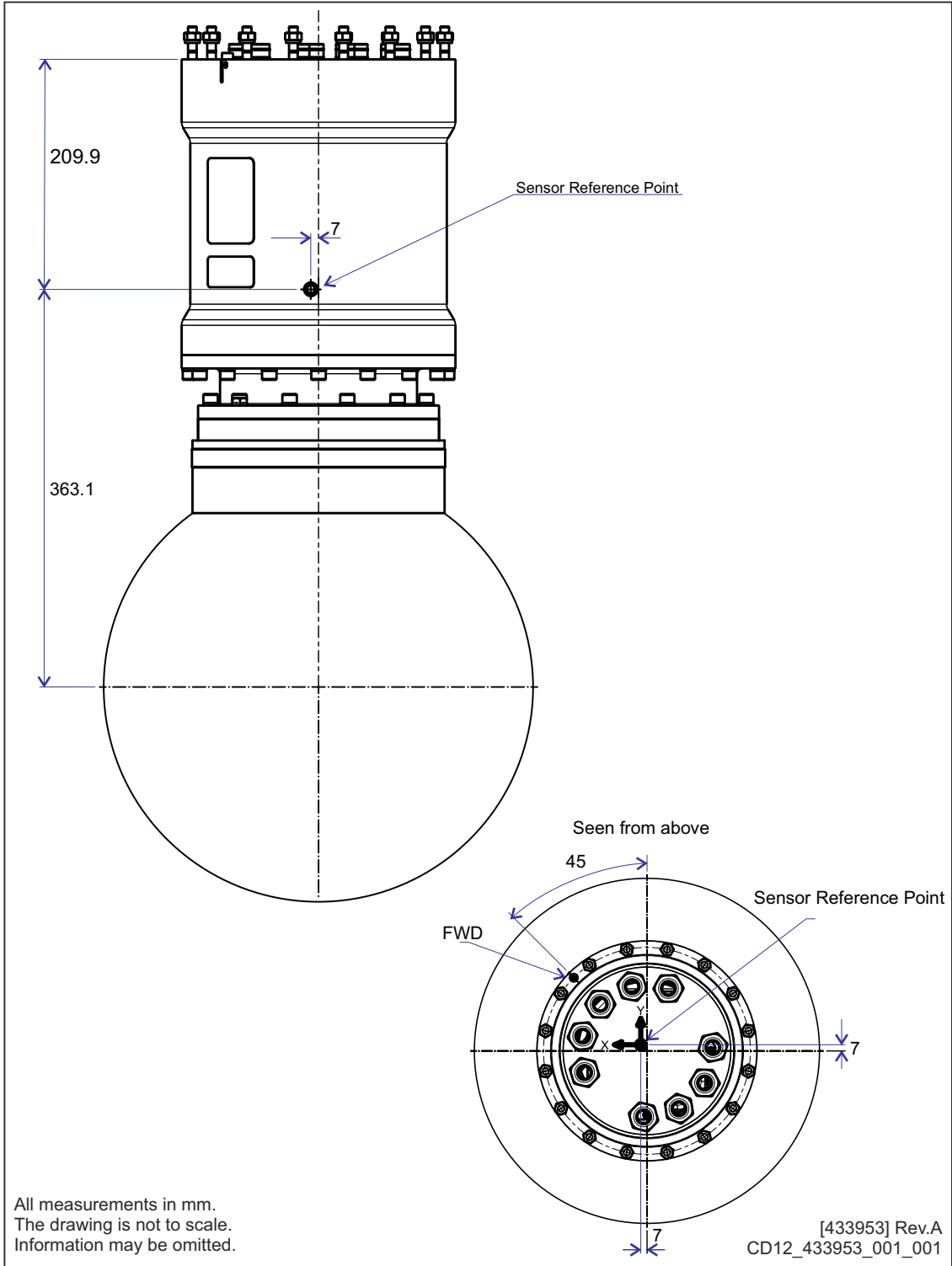
433851 Transducer – dimensions



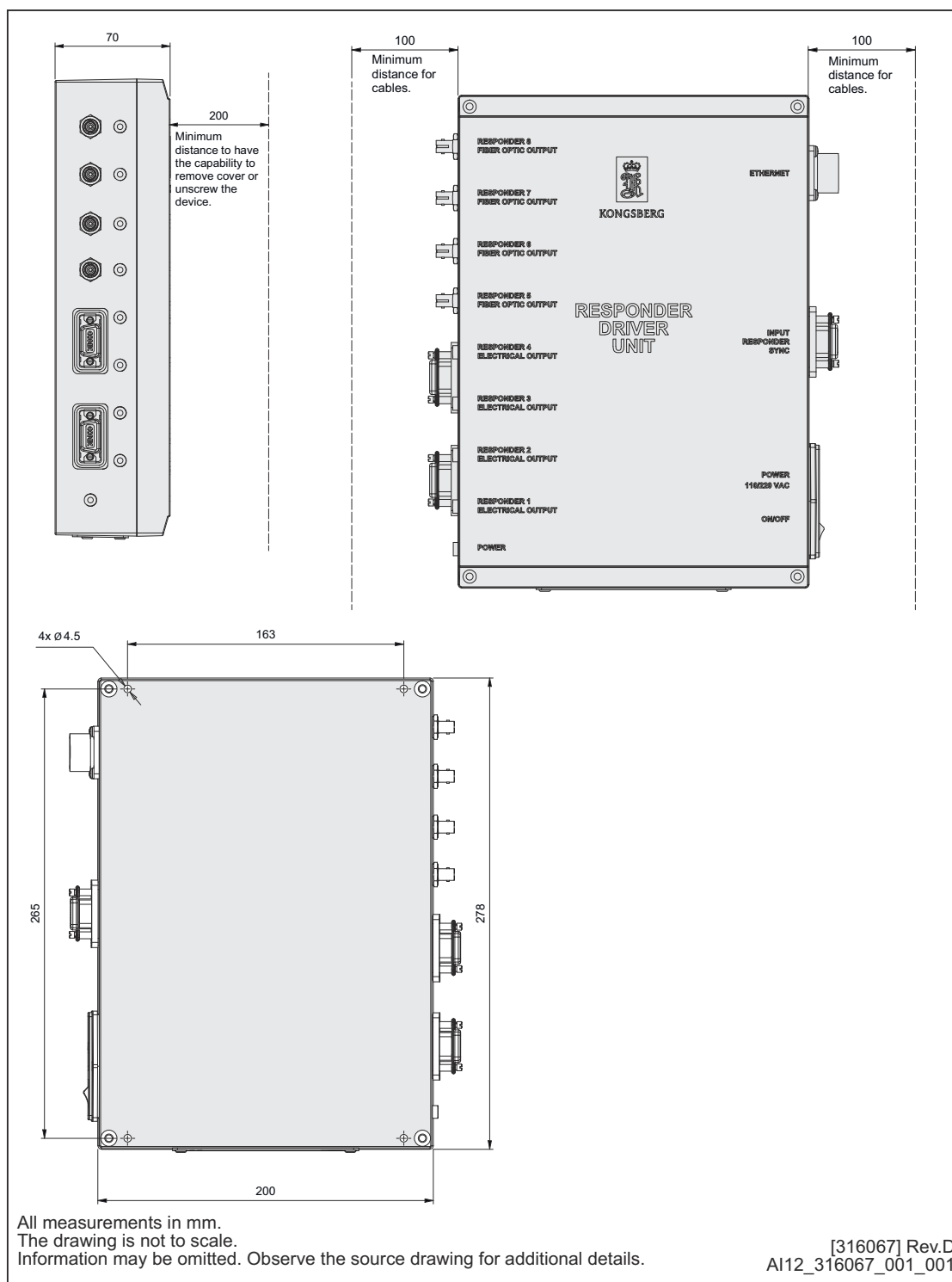
Transducer—minimum bending radius



433953 Sensor reference point

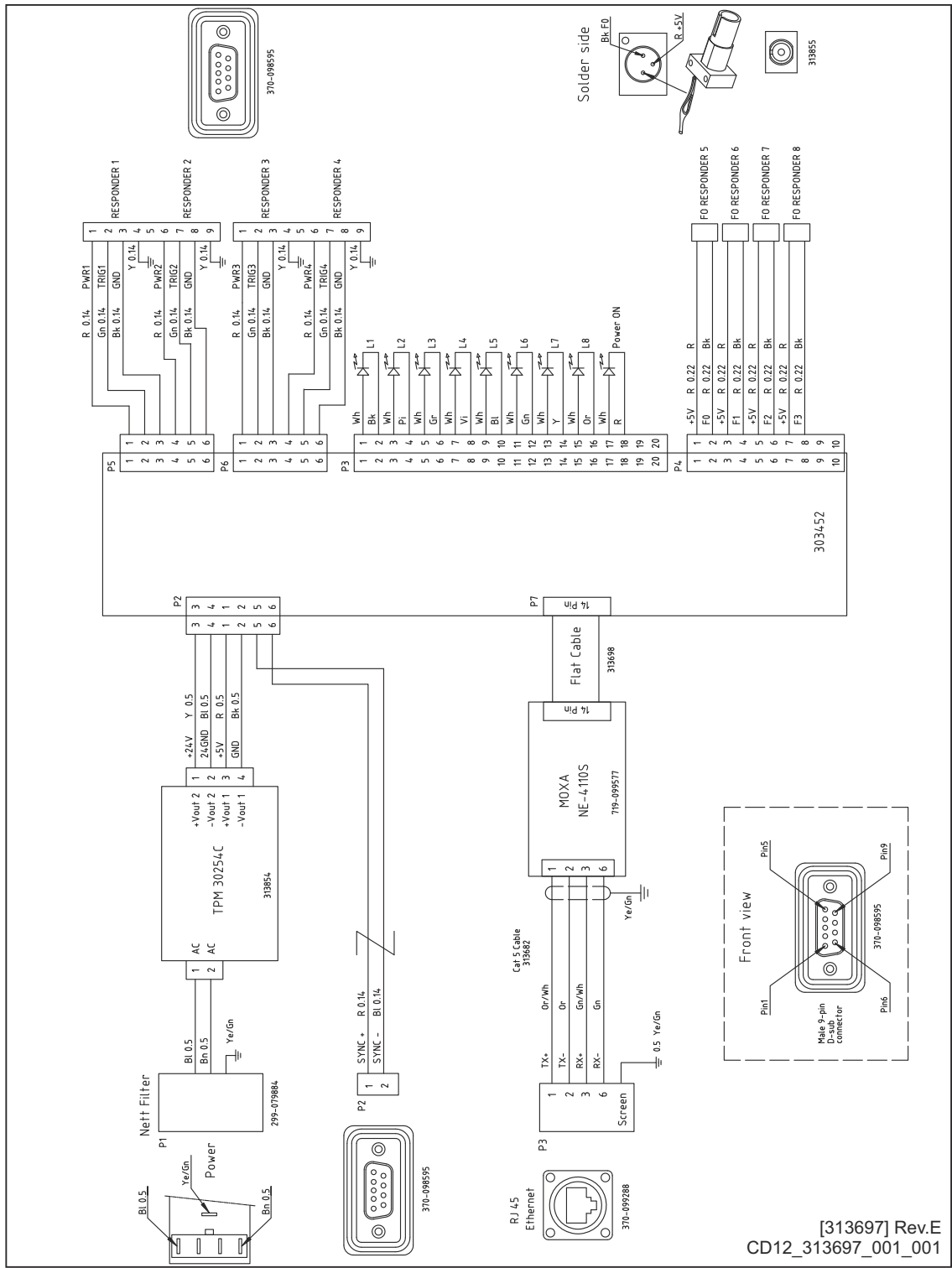


Responder Driver Unit dimensions



Responder driver unit, wiring diagram

Drawing 313697



[313697] Rev.E
CD12_313697_001_001

Equipment handling

Topics

[Inspection of units and transportation boxes after arrival, page 71](#)

[Unpacking standard parts and units, page 71](#)

[Specifications for storage after unpacking, page 73](#)

[Transporting Kongsberg Discovery equipment, page 74](#)

Inspection of units and transportation boxes after arrival

A visual inspection must be done immediately after the box(es) have arrived at their destination.

Prerequisites

If you suspect that the equipment has been damaged during the transport, request that a representative of the carrier is present during the inspection.

Procedure

1. Check all boxes (wooden or cardboard boxes, plastic bags and/or pallets) for physical damage.
Look for signs of dropping, immersion in water or other mishandling.
2. If external damage is detected, open the box to check its contents.
Request that a representative of the carrier to be present while the box is opened, so any transportation damage can be identified and documented.
3. If a unit has been damaged, prepare an inspection report stating the condition of the unit and actions taken.
Describe the damage, and collect photographic evidence if possible. Return the inspection report to Kongsberg Discovery as soon as possible.
4. If units are not damaged, check the humidity absorbing material.
If required, dry or replace the bags, then re-pack the unit(s) according to the packing instructions.

Unpacking standard parts and units

Prior to installation or use, parts and units must be inspected, and then unpacked from their transport boxes. It is important that this unpacking is done without inflicting damage to the equipment.

Context

This procedure provides the basic tasks of unpacking units (main unit, spare parts etc) from boxes shipped from Kongsberg Discovery.

Note: _____



If the unit in question is not unpacked for immediate use, you may consider storing it unopened in its original box. However, it may be useful to open the box to check its contents for damage and retrieve any accompanying documentation.

Do not use a knife to open cardboard boxes - the contents may be located close to the surface, and can then be damaged by the blade.

Procedure

1. Check the carton before opening it to ensure it shows no signs of dropping, immersion in water or other mishandling.
 - a. If external damage is detected, open the box to check its contents.
 - b. Request that a representative of the carrier to be present while the box is opened, so any transportation damage can be identified and documented.
 - c. If a unit has been damaged, prepare an inspection report stating the condition of the unit and actions taken.

Describe the damage, and collect photographic evidence if possible. Return the inspection report to Kongsberg Discovery as soon as possible.
2. Place the box on a stable work bench or on the floor with the top of the box facing upwards.
3. In the absence of other instructions, always open the top of the carton first.

The contents of the box will normally have been lowered into the carton from above, so this will usually be the easiest route to follow. Be careful when you open the box, and make sure that the contents are not damaged. Do not use a knife to open cardboard boxes.
4. If the box has been closed using staples, remove the staples from the carton as you open it.

This will reduce the possibilities of scratch injury to yourself and damage to the contents.
5. If a wooden box has been closed using screws, always remove them using a screwdriver.

Do not attempt to force the lid open with a crowbar or similar tool.
6. Once the carton is open, carefully remove all loose packing and insulation material.
7. Check for user manuals and other documents that may have been added to the carton during packing.
8. Check also for special tools, door keys etc.

Specifications for storage after unpacking

The unit must whenever possible be stored in its original transportation crate until ready for installation.

General specifications

During storage, each box must not be used for any purpose for which it was not intended (work platform, table, steps etc.).

Once unpacked, all equipment must be kept in a dry, non-condensing atmosphere, free from corrosive agents and isolated from sources of vibration.

Note: _____



Do not break the seal to open a circuit board package before the board is to be used. If the board package is returned to Kongsberg Discovery with the seal broken, we will assume that the unit has been used and you will be billed accordingly.

Each unit must be installed in its intended operating position as soon as possible after unpacking. If the unit contains normal batteries, these may have been disconnected/isolated before the unit was packed. These must then be reconnected during the installation procedure. Units containing batteries are marked.

CAUTION: _____



Units containing lithium or alkaline batteries must be handled separately and with care. Such units are marked accordingly. Do not attempt to recharge such batteries, open them, or dispose of them by incineration.

Refer to the applicable product data sheets or battery handling procedures for further details.

Temperature protection

Any units that requires protection against extreme temperatures are identified as such in the applicable documentation. The box used to transport and store such units are clearly marked, for example:

Must not be transported or stored in temperatures below -5 °C.

Other temperature limits may be used if applicable.

If a unit needs temperature protection, the box to be used for storage and transportation must be lined on all walls, base and lid, using minimum 5 cm thick polyurethane or polystyrene foam.

Most system units can normally be stored in temperatures between -30° C and +70° C. Refer to the relevant technical specifications for details.

Note: _____



Unless otherwise specified, transducers and hydrophones must not be stored in temperatures below -10°C and above $+50^{\circ}\text{C}$.

Transporting Kongsberg Discovery equipment

Unless otherwise stated in the accompanying documentation, electronic, electromechanical and mechanical units supplied by Kongsberg Discovery can be only transported using methods approved for delicate and fragile equipment.

Prerequisites

Transportation methods approved for delicate equipment includes transportation by road, rail, air or sea.

Context

The units are to be transported in accordance with general or specific instructions for the appropriate unit(s), using pallets, transport cases, wooden boxes, or carton boxes as appropriate.

Observe the packing instructions.

Note: _____



Special local restrictions concerning air transportation may be applied to units containing certain types of batteries. These units must be checked properly, and the regulations must be investigated by the packer/shipper before the unit is dispatched.

Procedure

1. Ensure that all local transportation is done according to the same specifications as for the initial delivery.
2. Make sure that the box containing the unit is kept dry at all times, and sheltered from the weather.

It must not be subjected to shocks, excessive vibration or other rough handling. The box will normally be marked with text or symbols indicating which way it is to be placed. Follow the instructions provided, and make sure that the box is always placed with its “top” facing upwards.

3. Make sure that the box is not used for any purpose for which it was not intended (step, table, etc.).

In the absence of other information, no other boxes must be stacked on top of it.

4. Handle all boxes and units with care.

Note: _____



Due to the nature of Kongsberg Discovery's products, and the extensive use of delicate electronic parts, all units and boxes must be regarded and handled as fragile equipment.

Index

Numerics

367861	
LPT32 spare part	58
391184	
switch spare part	58
394739	
LPT32 filter board spare part	58
397740	
fan spare part	58
413084	
computer	57
427030	
power supply spare part	58
435243	
transceiver spare part	58

A

about	
document downloads	7
electrostatic discharge (ESD)	41
online information	7
registered trademarks	7
target audience	7
this publication	7
transducer	12
AC mains	
connecting to the transceiver	25

B

backup	
software	45

C

cable plan	21
cables	
list	22
cabling	
connecting RDU & responder	31
commercial cables	
list	22
computer	
413084	57
connectors	24
environmental requirements	38
filter	43
installation	16
maintenance	45
outline dimensions	36
power requirements	37
rear panel	24
spare part	57
weight	36

connecting AC mains	
to the transceiver	25
connecting ground	
to the transceiver	25
connecting transducer	
to the transceiver	28
connection	
diagram	21
connections	
list	22
connectors	
computer	24

D

description	
operator station	11
system	9
Transceiver Unit	11
diagram	
connections	21
system	9
wiring	21
dimensions	
computer	36
display	36
technical specifications	36
transceiver	36
transceiver outline dimensions drawing	62
transducer	37, 64
display	
dimensions	36
outline dimensions	36
weight	36
drawing	
display outline dimensions	36
transceiver outline dimensions	62
transducer	64
drawing file	60
desktop computer	61
fibre to responder drive converter wiring	69
responder driver unit	67
drawings	60

E

electrical to fibre optical converter	
installation	32
electrostatic discharge (ESD)	
about	41
environmental	
requirements	38
environmental requirements	
computer	38
transceiver	38

environmental requirements (<i>continued</i>)	
Transceiver Unit	38
equipment	
responsibility	13
equipment handling	70
inspection	71
storage after unpacking	73
transportation	74
unpacking	71
visual inspection	71
ESD	
electrostatic discharge (ESD), about	41
ethernet switch	
spare part	58
F	
fan unit	
spare part	58
fibre optical to electrical converter	
installation	32
filter board	
removing	48
replacement	48
G	
general supply conditions	
equipment responsibility	13
receipt	13
storage	13
unpacking	13
ground	
connecting to the transceiver	25
H	
help	
technical support	14
HiPAP 502P	
system diagram	9
how to	
connect AC mains to the transceiver	25
connect ground to the transceiver	25
connect transducer to the transceiver	28
remove the filter board	48
remove the LPT32 Transceiver board	47
replace the filter board	48
replace the LPT32 Transceiver board	47, 48
transport Kongsberg Discovery equipment	74
unpack standard parts and units	71
visual inspection of units and transportation boxes	
after arrival	71
how to	
create a backup	45
Installing the computer	16
Installing the transceiver	18
humidity	
requirements	38

I	
information	
technical support	14
inspection	
transportation boxes	71
units	71
installation	
computer	16
converter	32
transceiver	18
installation procedures	
installing the responder driver unit	18
installation requirements	
environmental	38
humidity	38
temperature	38
Installing the transceiver	18
interconnection cables	
list	22
interfaces	
computer	24
introduction	
operator station	11
Transceiver Unit	11

K	
kits	
transducer	57

L	
list	
cables	22
commercial cables	22
connections	22
interconnection cables	22
shipyard cables	22
system cables	22
LPT32	
maintenance	49
replacing a filter board	49
LPT32 filter board	
spare part	58
LPT32 transceiver board	
spare part	58
LPT32 Transceiver board	
removing	47
replacement	47, 48

M	
maintenance	
computer	45
LPT32	49
MP5810	45
preventive maintenance	43
preventive maintenance schedule	43
replacing a filter board	49
replacing a fuse in the transceiver unit	54
replacing the fan unit in the transceiver unit	53

maintenance (<i>continued</i>)	
replacing the power module in the transceiver unit	53
replacing the terminal block in the transceiver unit	54
minimum bending radius	65
MP5810	43
filter	43
maintenance	45

O

offices	14
technical support	14
online information	7
website	7
operating voltage	37
computer	37
transceiver	38
Transceiver Unit	38
operator station	11
description	11
introduction	11
overview	11
purpose	11
order number	57
computer	57
ethernet switch	58
fan unit	58
filter board	58
transceiver	58
transceiver board	58
outline dimensions	36
computer	36
display	36
technical specifications	36
transceiver	36
transceiver outline dimensions drawing	62
transducer	37, 64
overview	11
operator station	11
Transceiver Unit	11

P

part number	57
computer	57
ethernet switch	58
fan unit	58
filter board	58
power supply	58
transceiver	58
transceiver board	58
performance	35
specifications	35
physical dimensions	37
transducer	37
plan	21
cable	21
power	

power (<i>continued</i>)	
requirements	37
specifications	37
power consumption	37
computer	37
transceiver	38
Transceiver Unit	38
power requirements	37
computer	37
transceiver	38
Transceiver Unit	38
power supply	58
part number	58
spare part	58
procedure	25
connecting AC mains to the transceiver	25
connecting ground to the transceiver	25
connecting transducer to the transceiver	28
creating a backup	45
Installing the computer	16
Installing the transceiver	18
removing the filter board	48
removing the LPT32 Transceiver board	47
replacing the filter board	48
replacing the LPT32 Transceiver board	47, 48
transporting Kongsberg Discovery equipment	74
unpacking standard parts and units	71
visual inspection of units and transportation boxes	71
after arrival	71
purpose	11
operator station	11
this publication	7
Transceiver Unit	11

R

rear panel	24
computer	24
registered trademarks	7
removing	48
filter board	48
LPT32 Transceiver board	47
replacement	48
filter board	48
LPT32 Transceiver board	47, 48
replacing a filter board	49
LPT32	49
maintenance	49
replacing a fuse	54
transceiver unit	54
replacing a fuse in the transceiver unit	54
maintenance	54
replacing the fan unit	53
transceiver unit x82	53
replacing the fan unit in the transceiver unit	53
maintenance	53
replacing the filter	43
replacing the power module	53
transceiver unit x82	53
replacing the power module in the transceiver unit	

replacing the power module in the transceiver unit (continued)	supply conditions (continued)
maintenance 53	receipt 13
replacing the terminal block 54	supply voltage
transceiver unit x82 54	computer 37
replacing the terminal block in the transceiver unit 54	transceiver 38
maintenance 54	Transceiver Unit 38
requirements 38	support information 14
environmental 38	system
humidity 38	description 9
power 37	diagram 9
temperature 38	system cables
responder driver unit 68	list 22
wiring diagram 68	
responsibility 13	
equipment 13	
S	T
shipyard cables 22	target audience 7
list 22	this publication 7
size	technical requirements
computer 36	power 37
display 36	technical specifications
technical specifications 36	outline dimensions 36
transceiver 36	performance 35
transceiver outline dimensions drawing 62	technical support
transducer 64	information 14
sockets	offices 14
computer 24	temperature
software	requirements 38
backup 45	this publication
spare part	about 7
computer 57	purpose 7
ethernet switch 58	this user manual
fan unit 58	about 7
LPT32 filter board 58	purpose 7
LPT32 transceiver board 58	transceiver
power supply 58	435243 58
transceiver 58	connecting AC mains 25
spare part fan	connecting ground 25
397740 58	connecting transducer 28
spare part LPT32	environmental requirements 38
367861 58	installation 18
spare part LPT32 filter board	outline dimensions 36
394739 58	outline dimensions drawing 62
spare part power supply	power consumption 38
427030 58	power requirements 38
spare part switch	spare part 58
391184 58	weight 36
spare parts	transceiver unit
transducer 57	replacing a fuse 54
specifications	Transceiver Unit
outline dimensions 36	description 11
performance 35	environmental requirements 38
power 37	introduction 11
storage after unpacking 73	overview 11
storage	power consumption 38
after unpacking 73	power requirements 38
supply conditions	purpose 11
equipment responsibility 13	transceiver unit x82
	replacing the fan unit 53
	replacing the power module 53
	replacing the terminal block 54

transducer	
about	12
connecting to the transceiver	28
dimensions	37, 64
minimum bending radius	65
outline dimensions	37, 64
physical dimensions	37
spare parts	57
weight	37
transportation	
of delicate and fragile equipment	74

U

unpacking	
standard parts and units	71

V

visual inspection	
transportation boxes	71
units	71

W

website	
document downloads	7
weight	
computer	36
display	36
transceiver	36
transducer	37
wiring	
diagram	21
wiring diagram	
responder driver unit	68

©2025 Kongsberg Discovery AS