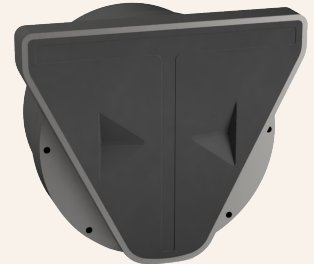


# FL25

## 6000 m depth rating



KONGSBERG



## Forward looking sonar 922-20340000

Kongsberg Discovery's FL25 is a four-axis multibeam system with both forward imaging and bathymetry capabilities.

### Don't miss a thing

A sonar performance of up to 200-meters range combined with a 140° field of view enables detection of the seafloor and targets in front of, and above, the underwater vehicle.

### Multiple installation options

The FL25 is suitable for a wide range of underwater vehicles from AUVs to ROVs. It can also be installed on USVs and small boats operating in shallow water.

### User-friendly software

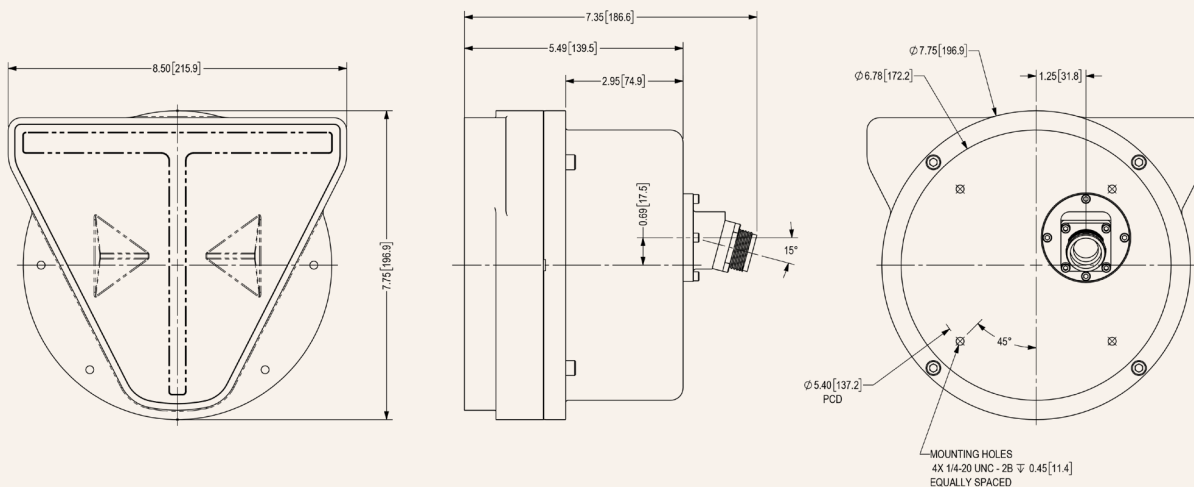
The operating software was developed specifically for the FL25 to manage communications with the head and operate all beamforming, image processing, and bottom detections.

### FEATURES

- 4-Axis Forward-Looking Sonar
- Nadir bathymetry
- Yaw tolerance
- Forward imaging
- Flexible operating modes
- Up to 6000 m pressure depth
- AUV interface software

### APPLICATIONS

- Decisional avoidance
- Navigation
- Gap filler



# Technical specifications

FL25 922-20340000

## Sonar Specifications

Range	0.2 m to 200 m
Range resolution	1.5 cm
Frequency	250 kHz
Pulse types	CW, CHIRP
Update rate	Up to 30 Hz
Max. number of beams	256

## Forward Bathymetry

Transmit beamwidth	140° x 10°
Number of transmitters	3
Receive field of view	Center 0°, Port -15°, Starboard 15°
Receive beams	2.2° x 40°

## Horizontal Imaging

Transmit beamwidth	140° x 30°
Number of transmitters	1
Receive field of view	140° x 30°
Receive beams	1.7° x 30°

## Environmental Specifications

Operating temperature	-4° C to +38° C
Storage temperature	-15° C to +55° C

## Interface Specifications

Communication	Ethernet
Data rates	100/1000 Mbps
Input voltage	12 to 36 VDC
Input power	50 W (avg.), peak power < 70 W, mode dependant
Operating System	Windows 10
Synchronization	PRI Sync, 1PPS

## Mechanical Specifications

Width	215.9 mm (8.5 in)
Height	186.6 mm (7.4 in)
Length	196.9 mm (7.8 in)
Weight in Air	10.8 kg (23.7 lbs)
Weight in Water	7.0 kg (15.5 lbs)
Depth Rating	6000 m
Connector Type	CRE
Connector Model	FRP16M Ti series
Materials	Titanium, Elastomeric Polyurethane

Specifications subject to change without any further notice.