



KONGSBERG

MAINTENANCE TRAINING LRU AND SRU LEVEL

Communication Maintenance Training Course

Communication Maintenance Training Course follows the Operator Course and covers maintenance routines, technical fault-finding and change of main components. on products and systems

Upon completion of this course, the trainees will be able to perform preparation, preventive maintenance, system operation and troubleshooting on the Shop Replaceable Unit (SRU) level. Extended use of hands-on practical exercises will be practiced in order to achieve the best possible training result.

WE OFFER

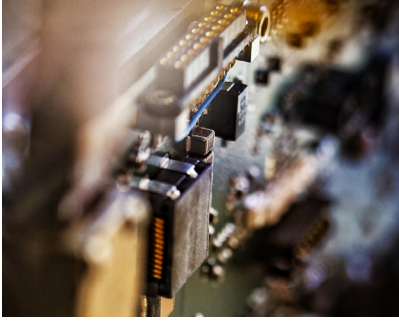
- High quality training
- Highly skilled instructors
- Customer tailored training solutions
- Instructor training
- A wide range of refreshment training options

Educational objectives basic training

- Basic Maintenance training is included in the Operator Training Course
- The students shall independently be able to perform maintenance on the system and system components at Line Replaceable Unit (LRU) level according to given procedures
- The students shall independently be able to perform Preventive Maintenance Checks and Services (PMCS) on the system and maintain system components according to given procedures

Educational objectives advanced training

- The students shall be able to utilize Special Tools and Test-Equipment (STTE) to perform preventive maintenance and fault isolation on the system and system components
- The students shall master maintenance of the system and system components at SRU-level according to maintenance manuals and technical documentation



Maintenance Training educational level

The Maintenance Training Course is our advanced maintenance training and follows the operator training.

Specialist Maintenance training (factory), may also be offered. This level of maintenance training is always customized and takes place at factory premises with instructions from professional factory workers.

Student audience Maintenance Training

The student audience for the Maintenance Training Course are workshop personnel/technical personnel with responsibility to maintain communication equipment as their primary task. Personnel attending have completed Operator training in advance. This precondition must be fulfilled in order to possess the basic knowledge needed in order to be able to follow the course progress.



A variety of tools are available for troubleshooting and corrective actions.



Maintenance is a vital part of keeping systems running. A well trained maintainer will maximize system availability and minimize down-time.

MAINTENANCE TRAINING OVERVIEW

In-processing	Course start-up. Introduction of the instructors and trainees. Presentation of course plan and objectives
Product training	Provides a general, physical and functional description of the products and their major components utilizing training guides, block schematics and technical manuals. Trainees will use the knowledge in practical exercises by performing disassembly and assembly of the products
System training and repetition	Hands-on practical exercises with both operational and technically manipulated errors to enhance faultfinding skills and detect erroneous functionality
Theoretical and practical examination	Examination of all topics of the course
Summarizing and evaluation	Course feedback and summary

