



KONGSBERG

***Hydrographic Work Station
Multibeam Echo Sounder
Instruction Manual***

495770/B

December 2022 © Kongsberg Maritime AS

Document information

- **Product:** Kongsberg Hydrographic Work Station
- **Document:** Instruction Manual
- **Document part number:** 495770
- **Revision:** B
- **Date of issue:** 21 December 2022

Copyright

The information contained in this document remains the sole property of Kongsberg Maritime AS. No part of this document may be copied or reproduced in any form or by any means, and the information contained within it is not to be communicated to a third party, without the prior written consent of Kongsberg Maritime AS.

Warning

The equipment to which this manual applies must only be used for the purpose for which it was designed. Improper use or maintenance may cause damage to the equipment and/or injury to personnel. You must be familiar with the contents of the appropriate manuals before attempting to operate or work on the equipment.

Kongsberg Maritime disclaims any responsibility for damage or injury caused by improper installation, use or maintenance of the equipment.

Disclaimer

Kongsberg Maritime AS endeavours to ensure that all information in this document is correct and fairly stated, but does not accept liability for any errors or omissions.

Support information

If you require maintenance or repair, contact Kongsberg Maritime's support organisation. You can also contact us using the following address: km.hydrographic.support@kongsberg.com. If you need information about our other products, visit <https://www.kongsberg.com/maritime>.

KM Support is also available in the KM-App.

The KM-Support App is available for free in the App Store and Google Play. The use of the KM-Support App is free of charge. The user's mobile phone provider may charge the costs of the phone call communication to the caller.

Table of contents

ABOUT THIS MANUAL	5
HYDROGRAPHIC WORK STATION	6
Hydrographic Work Station description	7
HWS - MC3xx	7
HWS - MP5810	7
Portable HWS - Dell Latitude 5424.....	8
CABLE LAYOUT AND INTERCONNECTIONS	9
Cable plan - Hydrographic Work Station.....	10
List of cables	11
HWS - MC3XX	12
MC3xx	12
Installing the MC3xx - VESA Display mount.....	14
Installing the MC3xx - VESA Desk mount	16
Installing the MC3xx - Rack mount - Compact.....	18
Installing the MC3xx - Rack mount - Full-size	21
MC3xx Connections - Rack mount - Compact.....	24
MC3xx Connections - Rack mount - Full-size	26
Front panel description - MC330 computer.....	28
Front panel description - MC340 computer.....	29
HWS - MP5810	30
Installing the HWS - MP5810	31
HWS front panel description - MP5810	34
HWS connections - MP5810 (SIS4).....	35
HWS connections - MP5810 (SIS5).....	37
TECHNICAL SPECIFICATIONS	39
Weights and outline dimensions	40
Power requirements	41
Environmental requirements.....	42
DRAWING FILE	43
464618 HWS dimensions - MC330 - Rack model	44
378828 HWS dimensions - MP5810	45
445723 Rack installation kit dimensions	46
365290 KM 1000 mounting kit dimensions	47

About this manual

This manual includes documentation to install and maintain the Hydrographic Work Station. For documentation to install and maintain the multibeam echo sounder system, see the manuals for the selected EM[®] system.

Target audience

This manual is intended for all users of the system.

Online information

For information about the Hydrographic Work Station and other products from Kongsberg Maritime, visit our website.

- <https://www.kongsberg.com/maritime/>

Registered trademarks

Observe the registered trademarks that apply.

EM[®] is a registered trademark of Kongsberg Maritime AS in Norway and other countries.

Windows[®] is a registered trademark of Microsoft Corporation in the United States and other countries.

Hydrographic Work Station

Topics

[Hydrographic Work Station description, page 7](#)

[HWS - MC3xx, page 7](#)

[HWS - MP5810, page 7](#)

[Portable HWS - Dell Latitude 5424, page 8](#)

Hydrographic Work Station description

The Hydrographic Work Station is the operator station of the EM multibeam system.

A dedicated maritime computer is provided. It is set up with all necessary software.

The Hydrographic Work Station is normally mounted near the operator work space.

The Hydrographic Work Station is based on a commercial design. Due to the constant development of new computer parts, older parts are no longer manufactured. This means that the computer type used with the Hydrographic Work Station system changes from time to time.

The Hydrographic Work Station is available in a semi rugged or fully rugged version for portable use.

HWS - MC3xx

MC3xx is a series of computers assembled by Kongsberg for use as an operator station for several products.

MC3xx is based on the Lenovo ThinkStation P Series workstation. The computer can be easily removed from the mount and transferred from ship to shore.



HWS - MP5810

MP5810 is the name of a HP computer used as an operator station for several Kongsberg products.

The computer is based on a commercial design and the software and hardware has been specified and assembled by Kongsberg to suit the different requirements.

The computer is a desktop model, and installation kits are available for rack mounting and horizontal mounting.

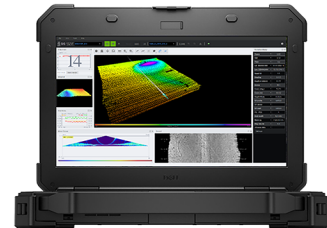
This product is discontinued and is no longer sold.



Portable HWS - Dell Latitude 5424

Latitude 5424 is the name of a Dell notebook computer used as an operator station.

The computer is available in a semi rugged or fully rugged version.



Cable layout and interconnections

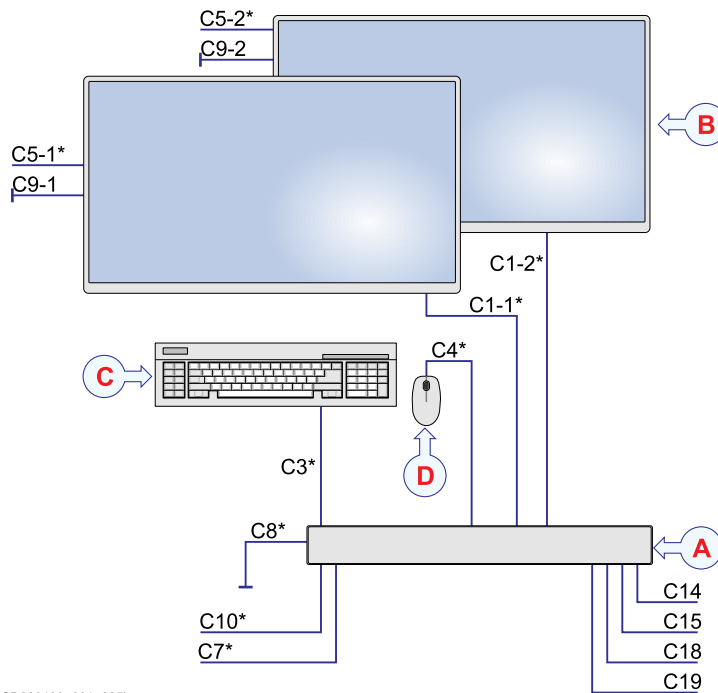
Topics

[Cable plan - Hydrographic Work Station, page 10](#)

[List of cables, page 11](#)

Cable plan - Hydrographic Work Station

The topside/bridge cables include those used to connect the computer and the display to each other, to AC mains power, and to external devices.



A *Hydrographic Work Station (HWS)*

B *Display*

The number of displays depend on the computer model used.

C *Computer keyboard*

D *Computer mouse or trackball*

Cables identified with an asterisk (*) are system or commercial cables. These cables are supplied with the Hydrographic Work Station delivery.

Related topics

[List of cables, page 11](#)

List of cables

A set of cables is required to connect the system units to each other, and to the relevant power source(s).

Cable	Signal	From/To	Minimum requirements
C1	Video cable	From Hydrographic Work Station to display	
	Display Port cable must be used. This is a commercial cable. The display cable is often physically attached to the display, and terminated in the “computer end” with a male connector. If the cable is not attached, it is normally provided with the display.		
C3	Computer cable	From Hydrographic Work Station to keyboard	
C4	Computer cable	From Hydrographic Work Station to mouse (or another similar device)	
C5	AC Power cable	From display to uninterruptible power supply (UPS)	2 x 1.5 mm ² + 1.5 mm ² Ground
C7	AC Power cable	From Hydrographic Work Station to uninterruptible power supply (UPS)	2 x 1.5 mm ² + 1.5 mm ² Ground
C8	Ground cable	From Hydrographic Work Station to vessel ground	1 x 6 mm ²
C9	Ground cable	From display to vessel ground	1 x 6 mm ²
C10	Ethernet cable	From Processing Unit to Hydrographic Work Station	Cat 5e STP (Shielded Twisted Pair)
	A 4.5 meter long Ethernet cable is provided with the Processing Unit. If a longer cable is required, this must be provided by the installation shipyard.		
C14	Serial cable	From computer to external device(s)	
C15	Serial cable	From computer to external device(s)	
C18	Ethernet cable	From Hydrographic Work Station to local area network (LAN)	Cat 5e STP (Shielded Twisted Pair)
C19	Ethernet cable	From Hydrographic Work Station to local area network (LAN)	Cat 5e STP (Shielded Twisted Pair)

Note

It is very important that high-quality Ethernet cables are used. You must use Cat 5e STP (Shielded Twisted Pair) quality or better. Using cables with lower bandwidth capacity will reduce performance.

Related topics

[Cable plan - Hydrographic Work Station, page 10](#)

HWS - MC3xx

Topics

[MC3xx, page 12](#)

[Installing the MC3xx - VESA Display mount, page 14](#)

[Installing the MC3xx - VESA Desk mount, page 16](#)

[Installing the MC3xx - Rack mount - Compact, page 18](#)

[Installing the MC3xx - Rack mount - Full-size, page 21](#)

[MC3xx Connections - Rack mount - Compact, page 24](#)

[MC3xx Connections - Rack mount - Full-size, page 26](#)

[Front panel description - MC330 computer, page 28](#)

[Front panel description - MC340 computer, page 29](#)

MC3xx

MC3xx is a series of computers assembled by Kongsberg for use as an operator station for several products.

MC3xx is based on the Lenovo ThinkStation P Series workstation. The computer can be easily removed from the mount and transferred from ship to shore.

The computer is available with different mounting kits and additional units.

VESA mount is a family of standards defined by the Video Electronics Standards Association for mounting displays to stands or wall mounts.



VESA Display mount

The MC3xx computer is available with a VESA Display mounting kit. This mounting kit allows you to attach the computer on the rear side of a display. This option is used

when two network connections are enough, one connection to the Processing Unit and one to the outside network.

- 2 display connections
- Internal NVMe disks for data storage
- 2 network connections

VESA Desk mount

The MC3xx computer is available with a VESA Desk mounting kit. This mounting kit allows you to attach the computer under a desk. This option is used when two network connections are enough, one connection to the Processing Unit and one to the outside network.

- 2 display connections
- Internal NVMe disks for data storage
- 2 network connections

Rack mount - Compact

The MC3xx computer is available with a compact rack mounting kit. This option allows the computer, power supply and an optional Ethernet switch to be installed in a 19" rack. With the optional Ethernet switch, the available network connections can be increased to 5.

- 2 display connections
- Internal NVMe disks for data storage
- 2 network connections (Can be expanded to 5 network connections)

Rack mount - Full-size

The MC3xx computer is available with a 19" rack drawer. This mounting kit allows the computer, with power supply and additional equipment, to be installed in a sliding drawer in a 19" rack. This option includes 5 available network connections, 1 serial line and 2 external SSD disks.

- 2 display connections
- Internal NVMe disks for data storage
- 5 network connections
- 1 RS-232 connection
- External SSD disks for data storage (Removable)

Related topics

[Installing the MC3xx - VESA Display mount, page 14](#)

[Installing the MC3xx - VESA Desk mount, page 16](#)

[Installing the MC3xx - Rack mount - Compact, page 18](#)

[Installing the MC3xx - Rack mount - Full-size, page 21](#)

Installing the MC3xx - VESA Display mount

The MC3xx computer is available with a VESA Display mounting kit. This mounting kit allows you to attach the computer on the rear side of a display.

Prerequisites

A suitable location for the computer must be defined prior to installation.

Note

Observe the compass safe distance.



You must be equipped with a standard set of tools.

Context

The MC3xx computer is available with a VESA Display mounting kit. This mounting kit allows you to attach the computer on the rear side of a display.

This option is used when two network connections are enough, one connection to the Processing Unit and one to the outside network.

This installation is method will provide 2 network connections, one for the Processing Unit and one for the outside network.

Procedure

- 1 Prepare the location and the necessary tools.
- 2 Separate the display from the stand.



- 3 Place the VESA mount on the display and fasten the screws.



- 4 Fasten the stand to the VESA mount.



- 5 Insert the computer into the VESA mount.
- 6 Connect the cables to the HWS.

Note _____

The network cable from the Processing Unit must be connected directly at the computer.

Installing the MC3xx - VESA Desk mount

The MC3xx computer is available with a VESA Desk mounting kit. This mounting kit allows you to attach the computer under a desk.

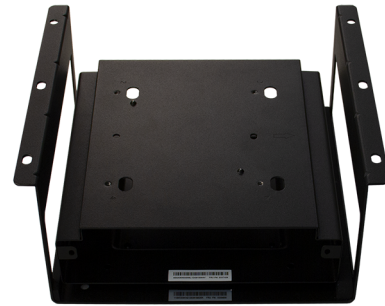
Prerequisites

A suitable location for the computer must be defined prior to installation.

Note

*The thickness of the desktop must be **minimum 19 mm**.*

Observe the compass safe distance.



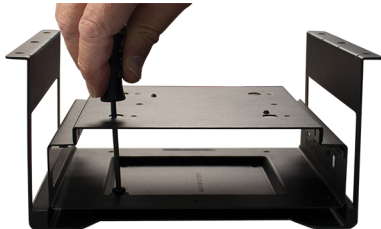
You must be equipped with a standard set of tools.

Context

This mounting kit is the same as the VESA Screen mount, but has an additional bracket for installation under the desk.

Procedure

- 1 Fasten the VESA mount to the additional desk mount using the screws that comes with the system.



- 2 Insert the computer into the VESA mount.



- 3 Mount the unit under the desk.

Note

The thickness of the desktop must be minimum 19 mm.



- 4 Connect the cables to the HWS.

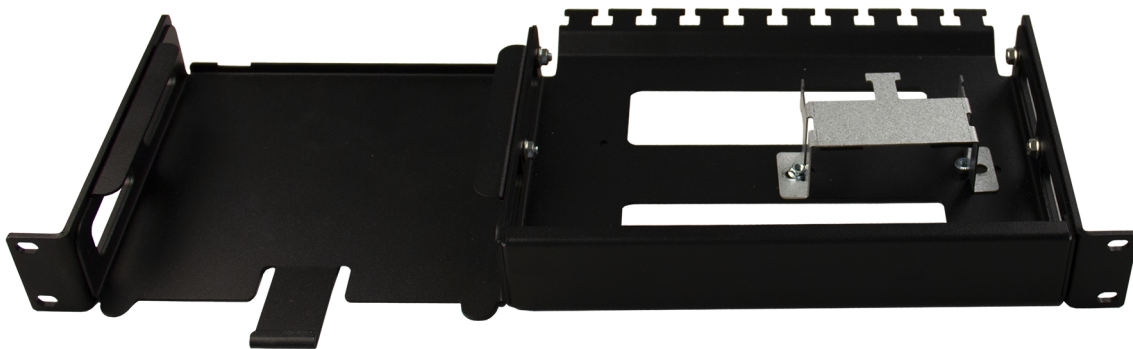
Note

The network cable from the Processing Unit must be connected directly at the computer.

Installing the MC3xx - Rack mount - Compact

The MC3xx computer is available with a compact rack mounting kit. This option allows the computer, power supply and an optional Ethernet switch to be installed in a 19 " rack.

Prerequisites



A suitable location for the computer must be defined prior to installation.

Note

Observe the compass safe distance.

You must be equipped with a standard set of tools.

In addition the following tools are required:

- Socket wrench with extender - 7 mm
- Socket wrench with extender - 5.5 mm

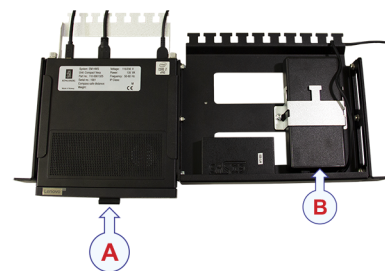
Context

A *Computer*

B *Power Supply Unit*

This option allows the computer, power supply and an optional Ethernet switch to be installed in a 19 " rack.

The compact rack mounting kit contains a fixed shelf which can be installed in a 19" rack. The shelf is fastened in the front of the rack.



With the optional Ethernet switch, the available network connections can be increased to 5.

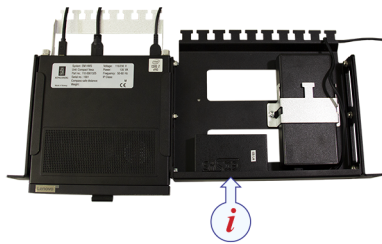
Procedure

- 1 Install the power supply.

The screws to the power clamp are 7 mm, use a socket wrench with an extender.



- 2 **Optional:** If you are using the optional Ethernet switch install it.
The screws are 5.5 mm, use a socket wrench with an extender.



- *Ethernet switch for network connection - Optional unit*

- 3 Attach the strain relief to the computer.



- 4 Slide the HWS into the shelf.
5 Connect the cables to the HWS.

Note _____

The network cable from the Processing Unit must be connected directly at the computer.

- a If you are using the optional USB to Ethernet switch, 4 additional Ethernet ports are available.

- b If You are using the USB to Ethernet converter, 1 additional Ethernet port is available.



- 6 Secure the cables to the strain relief.
Allow enough slack so the HWS can be removed from the shelf by pressing down the lip in front and extracting the whole unit.
- 7 Install the unit in a 19" rack.
Nuts and bolts for mounting the shelf in a 19" rack are not supplied with the mounting kit. This is normally supplied with the rack system.

Related topics

[MC3xx Connections - Rack mount - Compact, page 24](#)

Installing the MC3xx - Rack mount - Full-size

The MC3xx computer is available with a 19" rack drawer. This mounting kit allows the computer, with power supply and additional equipment, to be installed in a sliding drawer in a 19" rack.

Prerequisites

Note

Observe the compass safe distance.



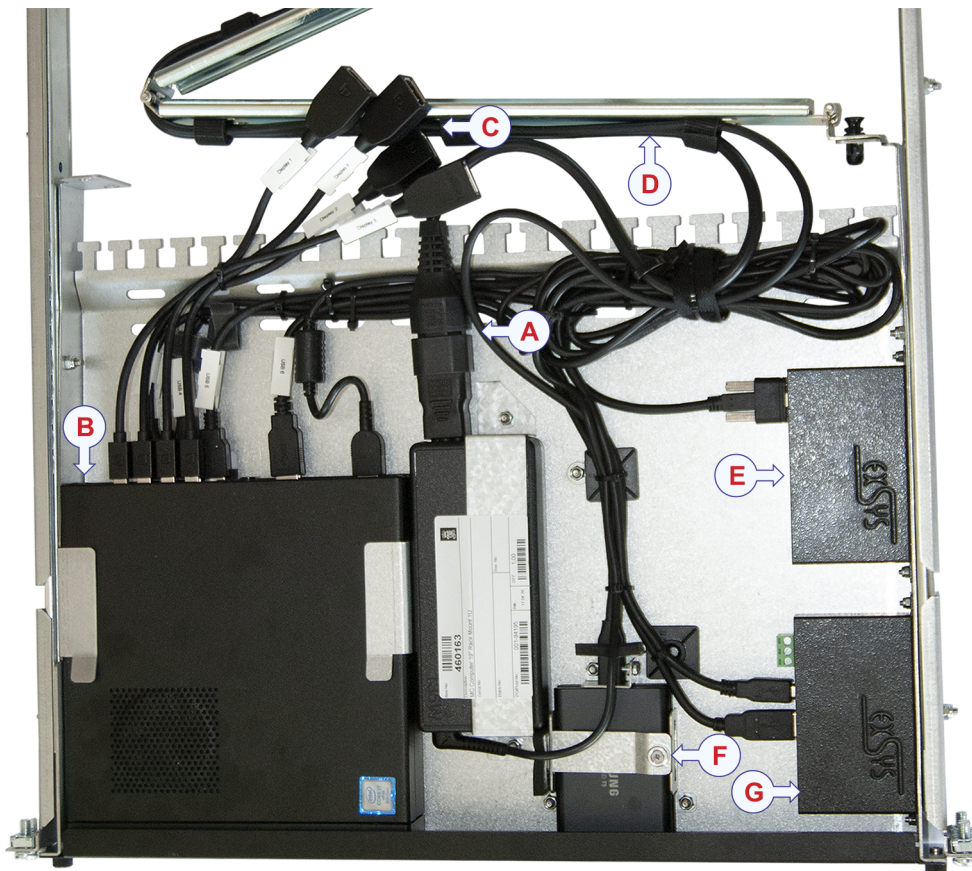
The minimum depth of the rack is 520 mm. If the rack is deeper, the sliding drawer can be extended to fit the rack mount.

You must be equipped with a standard set of tools.

Context

This option includes 5 available network connections, 1 serial line and 2 external SDD disks.

If a wireless mouse is used, it may be better to insert the radio transmitter for the mouse in the front rather than inside the cabinet.



- A *Power cable*
There is a converter which makes it possible to use the same cable as in previous versions of the HWS.
- B *Network cable from the Processing Unit*
- C *Display cables*
- D *Moving arm*
- E *Ethernet switch for network connection*
- F *Screw that holds removable SSDs*
Remove the front cover and open the drawer, then gently remove the SSD.
- G *USB hub*
Mouse, keyboard and USB license dongle are connected here.

Procedure

- 1 Adjust the rails to fit the rack.
- 2 Place the drawer in the rack. It is fastened in the front and rear with nuts and bolts.

- 3 Connect the cables to the HWS.

Remember to mark all cables, so you know where to connect the other end. Labels are provided with the HWS.

Note

The network cable from the Processing Unit must be connected directly at the computer. (B)

- 4 Attach all the cables to the moving arm using cable ties.
- 5 Connect the loose end of the cables to their respective units.

Related topics

[MC3xx Connections - Rack mount - Full-size, page 26](#)

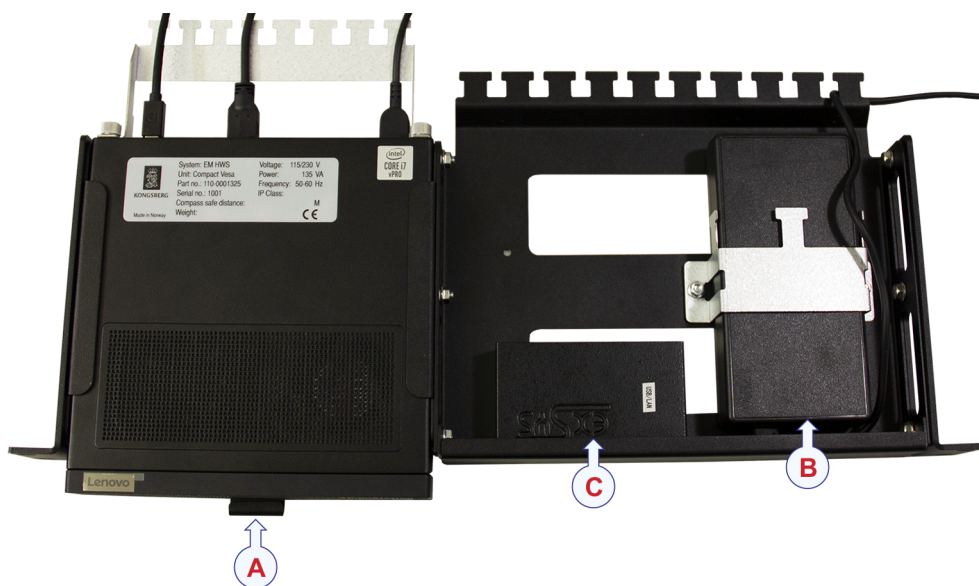
[464618 HWS dimensions - MC330 - Rack model, page 44](#)

MC3xx Connections - Rack mount - Compact

Different options for network connection are available.

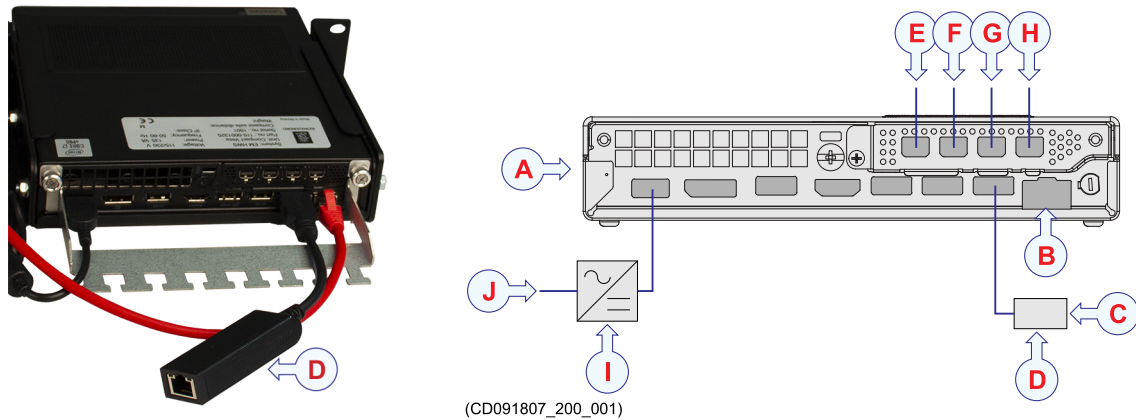
The MC3xx computer has different options for network connection:

- 2 network connections
This option uses an USB to Ethernet converter
- 5 network connections
This option uses an USB to Ethernet switch



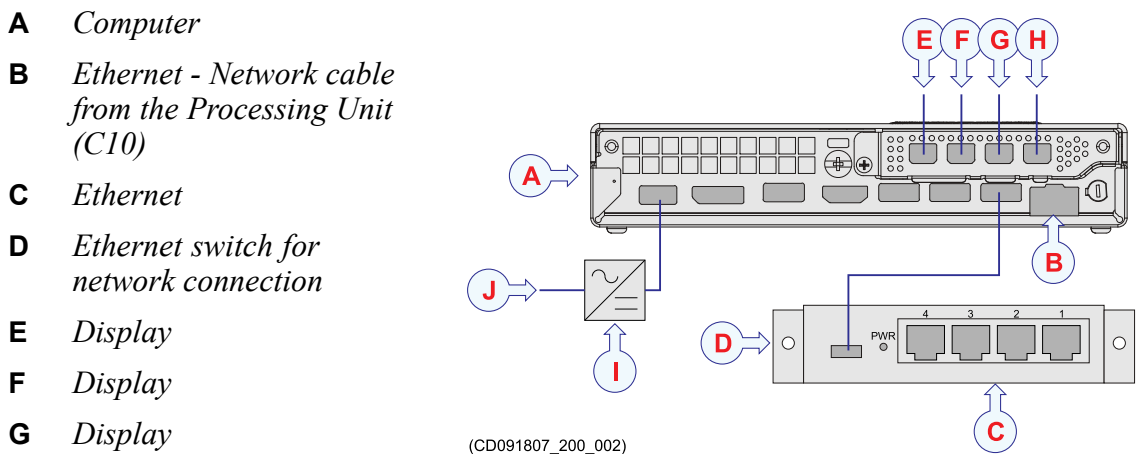
- A** *Computer*
- B** *Power supply*
- C** *Ethernet switch for network connection - Optional unit*

Connections - USB to Ethernet unit



- A Computer
- B Ethernet - Network cable from the Processing Unit (C10)
- C Ethernet
- D USB to Ethernet unit
- E Display
- F Display
- G Display
- H Display
- I Power Supply Unit
- J Power supply

Connections - Ethernet switch



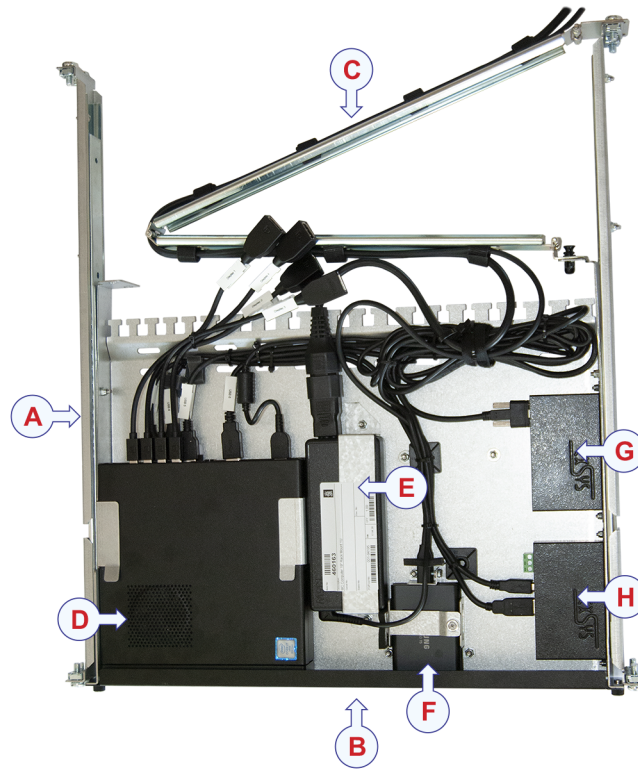
- A Computer
- B Ethernet - Network cable from the Processing Unit (C10)
- C Ethernet
- D Ethernet switch for network connection
- E Display
- F Display
- G Display
- H Display
- I Power Supply Unit
- J Power supply

MC3xx Connections - Rack mount - Full-size

The rack model is mounted in a sliding drawer, and the cables are connected inside the drawer.

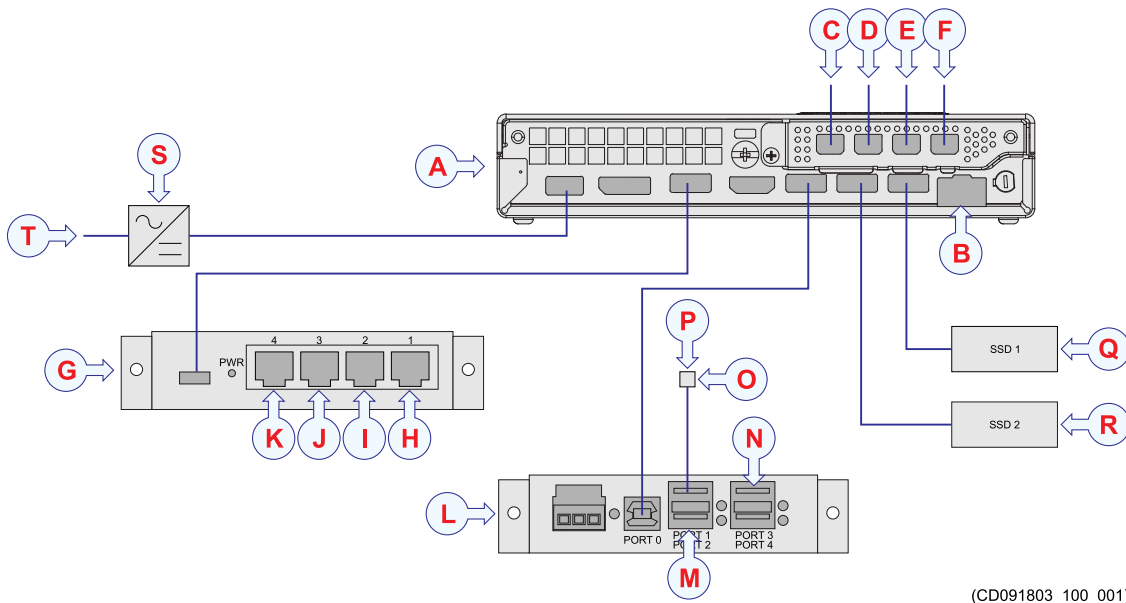
HWS - MC330 - Rack model

- A *Rack mount drawer*
- B *Front*
- C *Moving arm*
- D *MC330 computer*
- E *Power supply*
- F *Solid-state drives (SSD)*
- G *Ethernet switch for network connection*
- H *USB hub*
Mouse, keyboard and USB license dongle are connected here.



Top view

Connections



(CD091803_100_001)

- A** MC330 computer
- B** Ethernet - Net A
Network cable from the Processing Unit (C10)
- C** Display
- D** Display
- E** Display
- F** Display
- G** Ethernet switch for network connection
- H** Ethernet - Net B
- I** Ethernet - Net C
- J** Ethernet - Net D
- K** Ethernet - Net E
- L** USB hub
- M** Computer keyboard
- N** Computer mouse
- O** USB to serial line unit
- P** Serial line
- Q** Solid-state drive (SSD)
- R** Solid-state drive (SSD)
- S** Power Supply Unit
- T** Power supply

Front panel description - MC330 computer

Description of HWS, type MC330

The front panel of the Hydrographic Work Station holds a mains power switch, LED indicators, USB sockets and hard disk drives.

A *Power On/Off*

A LED indicator is integrated in the on/off button.

B *Hard disk indicator*

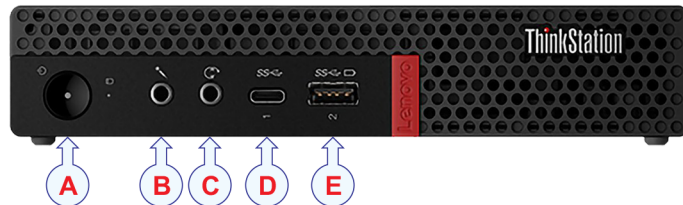
C *Audio input*

(Microphone port)

D *Audio input/output (Microphone/headphone port)*

E *USB-C port*

F *USB-A port*



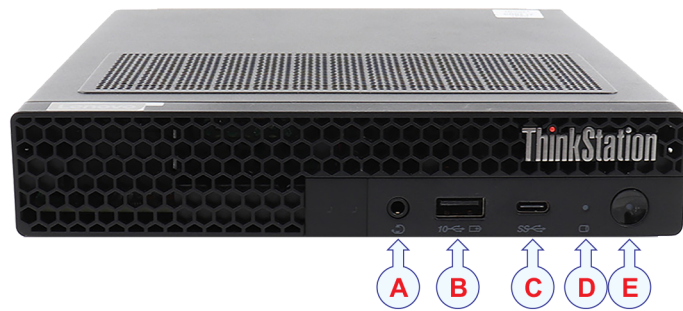
Front panel description - MC340 computer

Description of HWS, type MC330

The front panel of the Hydrographic Work Station holds a mains power switch, LED indicators, USB sockets and hard disk drives.

- A** *Audio input/output (Microphone/headphone port)*
- B** *USB-A port*
- C** *USB-C port*
- D** *Hard disk indicator*
- E** *Power On/Off*

A LED indicator is integrated in the on/off button.



HWS - MP5810

Topics

[Installing the HWS - MP5810, page 31](#)

[HWS front panel description - MP5810, page 34](#)

[HWS connections - MP5810 \(SIS4\), page 35](#)

[HWS connections - MP5810 \(SIS5\), page 37](#)

Installing the HWS - MP5810

The computer can be installed inside a console, inside a suitable cabinet, in a 19" rack or on a desk. Make sure that ample ventilation is provided to avoid overheating.

Prerequisites

You must be equipped with a standard set of tools. This tool set must comprise the normal tools for electronic and electromechanical tasks. This includes different screwdriver types, pliers, spanners, a cable stripper, a soldering iron, etc. Each tool must be provided in various sizes. We recommend that all tools are demagnetized to protect your equipment.



A suitable location for the computer must be defined prior to installation.

Note

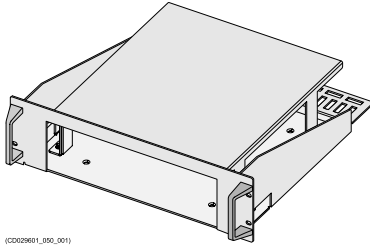
Observe the compass safe distance.

Context

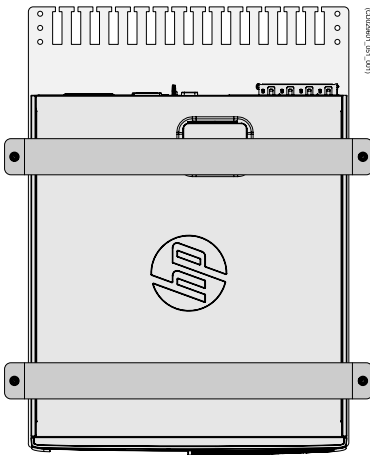
The Hydrographic Work Station can be installed in several different ways using various installation kits.

- Stand-alone desktop mounting (No installation kit)

- 19" rack mounting kit - Part number 371931
Drawing 445723



- Horizontal or vertical mounting kit - Part number 331385
Drawing 365290



Procedure

- 1 Prepare the location and the necessary tools.
- 2 Observe the installation requirements.
 - a Depending on its physical properties, install the computer inside a console, in a cabinet or 19" rack, or on a desk.
 - b Choose a position to fit the available cable lengths between the computer and the other units it connects to.
 - c Observe the compass safe distance.
 - d Make sure that enough space is made available for maintenance purposes.
 - e Make sure that adequate ventilation is available to avoid overheating.
 - f Make sure that the installation method allows for the physical vibration, movements and forces normally experienced on a vessel.

Note

To allow future maintenance, you must mount the unit with its cables and connectors available for easy access.

- 3 Make sure that the chosen location meets the installation requirements.
- 4 Provide ample space around the computer.

You must be able to reach and use the front and rear mounted connectors and on/off switches. It is also important that you allow for easy access to all the computer cables, and enough space for inspection, maintenance and parts replacement. If relevant: Make sure that the space allows you to open the computer for unobstructed access to its internal parts.

Note _____

Make sure that you can access both the rear and front side of the computer after it has been installed.

- 5 If you are mounting the computer using the 19" rack kit:
 - a Remove the lid on the rack shelf.
 - b Place the computer on the shelf.
 - c Mount the lid, and secure it properly.
 - d Place the shelf into the 19" rack.

All necessary nuts and bolts are provided with the mounting kit.

- 6 If you are mounting the computer using the horizontal/vertical kit:
 - a Prepare four holes – each M6 – for the bottom plate.
 - b Mount the bottom plate using M6x20 bolts, washers and nuts.
 - c Place the computer on the bottom plate.
 - d Mount the two brackets to the bottom plate using M5 locking nuts and washers.
- 7 If you are mounting the computer as a stand-alone desktop unit:
 - a Place the computer on the surface.
 - b Secure the computer using any means available.
- 8 Connect the cables.

Note _____

When you connect the cables, make sure that they are all properly secured, and able to withstand the vibration and movements of the vessel.

Related topics

[378828 HWS dimensions - MP5810, page 45](#)

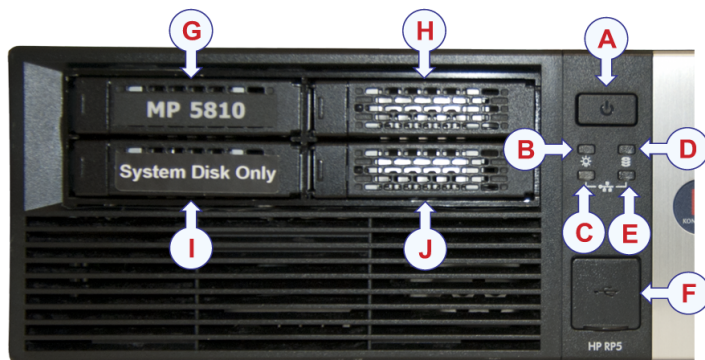
[445723 Rack installation kit dimensions, page 46](#)

[365290 KM 1000 mounting kit dimensions, page 47](#)

HWS front panel description - MP5810

Description of HWS, type MP5810

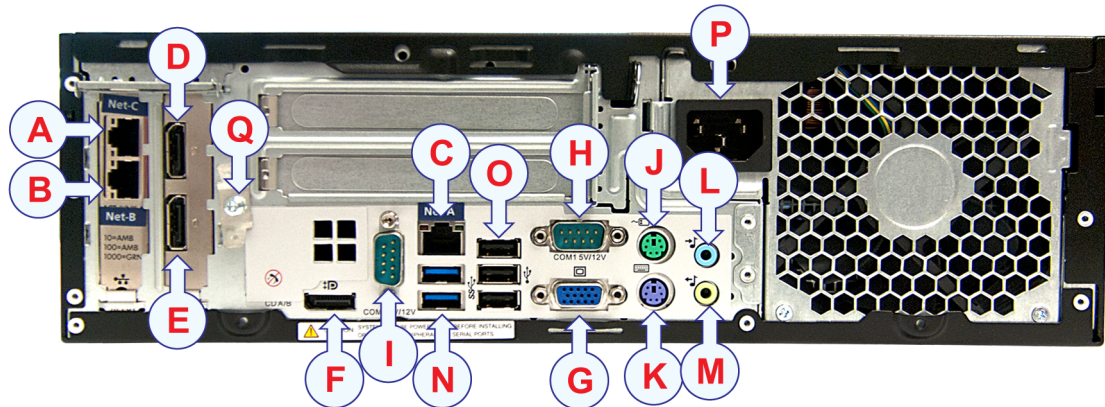
The front panel of the Hydrographic Work Station holds a mains power switch, LED indicators, USB sockets and hard disk drives.



- A *Power On/Off*
- B *Power connection indicator*
- C *Network connection indicator*
- D *Hard disk indicator*
- E *Network activity indicator*
- F *Two USB 2.0 connectors behind lid*
- G *Hard disk drive*
- H *Hard disk drive*
- I *Hard disk drive. System disk*
- J *Not used*

HWS connections - MP5810 (SIS4)

The rear panel of the Hydrographic Work Station holds connectors for the various Hydrographic Work Station cables.



The image shows the MP5810 Fishery SIS4 model. Part number: 419322

If another model is used, the connections can be different.

- A** Ethernet cable: From Processing Unit to Hydrographic Work Station (C11)
- B** Ethernet cable: From Hydrographic Work Station to local area network (LAN)
Not used
- C** Ethernet cable: From Processing Unit to Hydrographic Work Station (C10)

It is very important that a high-quality Ethernet cable is used. You must use Cat 5e STP (Shielded Twisted Pair) quality or better. Using a cable with lower bandwidth capacity will reduce performance.

- D** DisplayPort

Display cable: From computer to display (C1)

This is a commercial cable. The display cable is often physically attached to the display, and terminated in the “computer end” with a male connector. If the cable is not attached, it is normally provided with the display.

- E** DisplayPort

- F** DisplayPort

- G** Video port: VGA

- H** Serial cables: From computer to external device(s) (C14)

- I** Serial cables: From computer to external device(s) (C15)

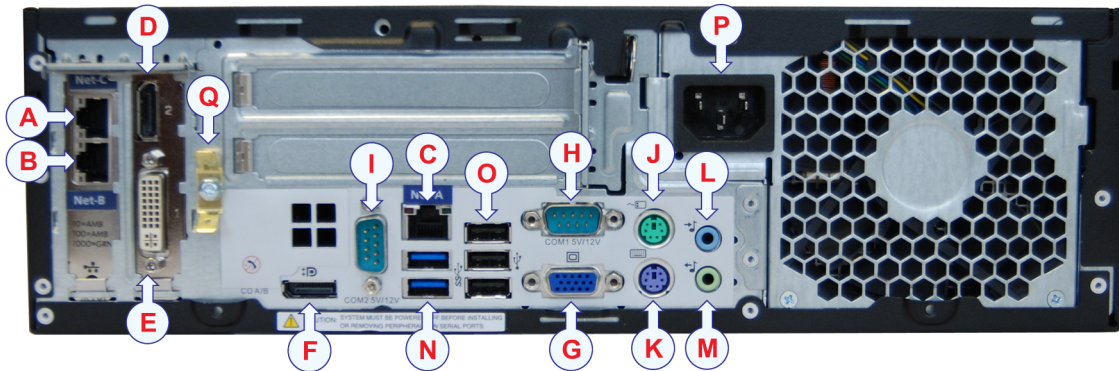
- J** Computer cable: From Hydrographic Work Station to mouse (or another similar device) (C4)

The cable is often physically attached to the mouse, and terminated in the “computer end” with a male PS/2 or USB connector. Depending on the type of connector you must connect the mouse to the PS/2 connector or an USB connector on the computer.

- K** *Computer cable: From Hydrographic Work Station to keyboard (C3)*
The cable is often physically attached to the keyboard, and terminated in the “computer end” with a male PS/2 or USB connector. Depending on the type of connector you must connect the keyboard to the PS/2 connector or an USB connector on the computer.
- L** *Audio cable: Not used*
- M** *Audio cable: Not used*
- N** *USB (Universal Serial Bus) sockets: USB 3.0 From computer to external device(s)*
- O** *USB (Universal Serial Bus) sockets: USB 2.0 From computer to external device(s)*
- P** *AC Power cable: From Hydrographic Work Station to uninterruptible power supply (UPS) (C7)*
- Q** *Ground cable: From Hydrographic Work Station to vessel ground (C8)*

HWS connections - MP5810 (SIS5)

The cables are connected on the rear panel on the computer.



The image shows the MP5810 Fishery SIS5 model. Part number: 438847

If another model is used, the connections can be different.

A Ethernet cable: From Hydrographic Work Station to local area network (LAN) (C18)

B Ethernet cable: From Hydrographic Work Station to local area network (LAN) (C19)

C Ethernet cable: From Processing Unit to Hydrographic Work Station (C10)

It is very important that high-quality Ethernet cables are used. You must use Cat 5e STP (Shielded Twisted Pair) quality or better. Using cables with lower bandwidth capacity will reduce performance.

D DisplayPort

Display cable: From Hydrographic Work Station to display (C1)

This is a commercial cable. The display cable is often physically attached to the display, and terminated in the “computer end” with a male connector. If the cable is not attached, it is normally provided with the display.

E Video port: DVI

F DisplayPort

G Video port: VGA

H Serial cables: From Hydrographic Work Station to external device(s) (C14)

I Serial cables: From Hydrographic Work Station to external device(s) (C15)

J Computer cable: From Hydrographic Work Station to mouse (or another similar device) (C4)

The cable is often physically attached to the mouse, and terminated in the “computer end” with a male PS/2 or USB connector. Depending on the type of connector you must connect the mouse to the PS/2 connector or an USB connector on the computer.

- K** *Computer cable: From Hydrographic Work Station to keyboard (C3)*
The cable is often physically attached to the keyboard, and terminated in the “computer end” with a male PS/2 or USB connector. Depending on the type of connector you must connect the keyboard to the PS/2 connector or an USB connector on the computer.
- L** *Audio cable: Not used*
- M** *Audio cable: Not used*
- N** *USB (Universal Serial Bus) sockets: USB 3.0 From Hydrographic Work Station to external device(s)*
- O** *USB (Universal Serial Bus) sockets: USB 2.0 From Hydrographic Work Station to external device(s)*
- P** *AC Power cable: From Hydrographic Work Station to uninterruptible power supply (UPS) (C7)*
- Q** *Ground cable: From Hydrographic Work Station to vessel ground (C8)*

Technical specifications

Topics

[Weights and outline dimensions, page 40](#)

[Power requirements, page 41](#)

[Environmental requirements, page 42](#)

Weights and outline dimensions

These weights and outline dimension characteristics summarize the physical properties of the Hydrographic Work Station system.

Hydrographic Work Station - MC330

- **Make and model:** MC330
- **Outline dimensions:**
 - **Depth:** 520 – 742 mm
 - **Width:** 483 mm
 - **Height:** 44.45 mm (1U)
- **Weight:** approximately 6.6 kg

Hydrographic Work Station - MP5810

- **Make and model:** HP MP5810
- **Outline dimensions:**
 - **Depth:** 379 mm
 - **Width:** 338 mm
 - **Height:** 100 mm
- **Weight:** 7 kg (Approximately)

Portable Hydrographic Work Station

- **Make and model:** Dell Latitude 5424 Rugged
- **Outline dimensions (Excludes bumpers and handle):**
 - **Depth:** 347.0 mm
 - **Width:** 244.5 mm
 - **Height:** 44.4 mm
- **Weight:** Starting at 2.5 kg

For more detailed information about the physical dimensions, see the *Drawing file*.

Related topics

[Drawing file, page 43](#)

Power requirements

These power characteristics summarize the supply power requirements for the Hydrographic Work Station system.

Hydrographic Work Station - MC330

- **Make and model:** MC330
- **Voltage requirement:** 115/230 VAC
- **Power consumption:** Max 135 W, 65 W typical

More technical information is stated in the data sheet for the Hydrographic Work Station.

Visit our website for this information: <https://www.kongsberg.com/maritime/>

Note _____

The use of an Uninterruptible Power Supply (UPS) is highly recommended for the Hydrographic Work Station.

Hydrographic Work Station - MP5810

- **Make and model:** HP MP5810
- **Voltage requirement:** 100/240 VAC, 50 to 60 Hz, autosensing
- **Maximum power consumption:** 240 W (Approximately)

Note _____

The use of an Uninterruptible Power Supply (UPS) is highly recommended for the Hydrographic Work Station.

Portable Hydrographic Work Station

- **Make and model:** Dell Latitude 5424 Rugged
- **Voltage requirement:** 100/240 VAC or 19.5 VDC
- **Maximum power consumption:** 90 W

Environmental requirements

These specifications summarize the temperature requirements and other environmental standards for the Hydrographic Work Station system.

Hydrographic Work Station - MC330

- **Make and model:** MC330
- **Operating temperature:** 0 to +50 °C
- **Storage temperature:** -20 to +70 °C
- **Relative humidity:** 5 to 95% Non-condensing
- **Certificates:**
 - IEC 60945
 - IACS E10

More technical information is stated in the data sheet for the Hydrographic Work Station.

Visit our website for this information: <https://www.kongsberg.com/maritime/>

Hydrographic Work Station - MP5810

- **Make and model:** HP MP5810
- **Operating temperature:** 0 to +50 °C
- **Storage temperature:** -20 to +70 °C
- **Relative humidity:** 5 to 95% Non-condensing
- **Ingress protection (IP) code:** IP22
This IP rating is only applicable when the unit is mounted using the optional kit for 19-inch rack.
- **Certificates:**
 - IEC 60945
 - IACS E10

Portable Hydrographic Work Station

- **Make and model:** Dell Latitude 5424 Rugged
- **Operating temperature:** -29 to +60 °C
- **Storage temperature:** -51 to +71 °C
- **Relative humidity:** 10 to 80 % Non-condensing
- **Ingress protection (IP) code:** IP52
Dust-protected, protected against dripping water when tilted up to 15 degrees

Drawing file

Topics

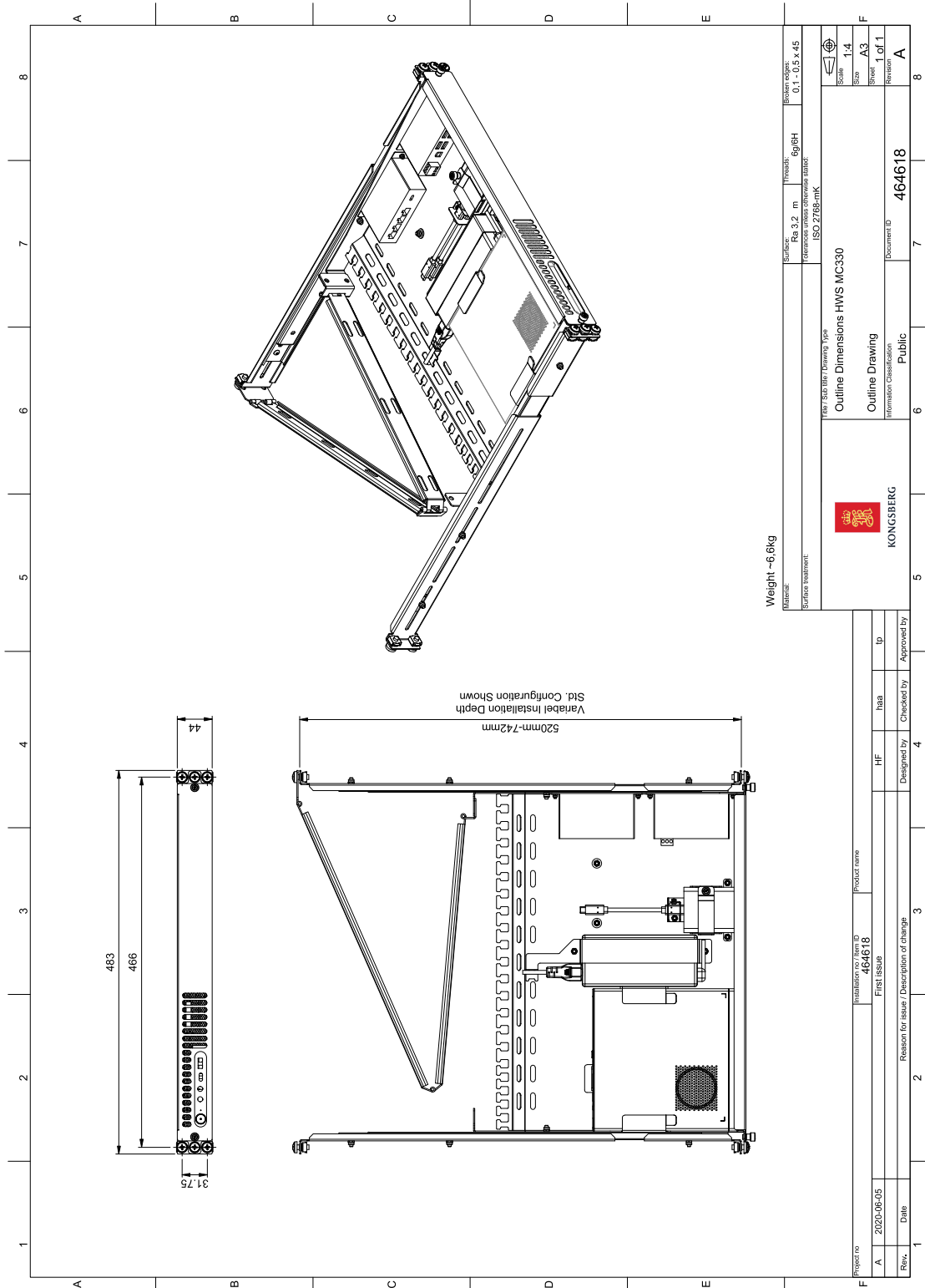
[464618 HWS dimensions - MC330 - Rack model, page 44](#)

[378828 HWS dimensions - MP5810, page 45](#)

[445723 Rack installation kit dimensions, page 46](#)

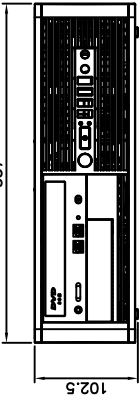
[365290 KM 1000 mounting kit dimensions, page 47](#)

464618 HWS dimensions - MC330 - Rack model

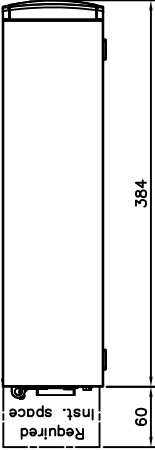


The reproduction, distribution and utilization of this document as well as the communication of its contents to others without express authorization is prohibited. Offenders will be held liable for the payment of damages. All rights reserved in the event of a patent, utility model or design. Kongsberg Maritime

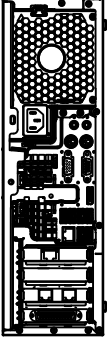
378828 HWS dimensions - MP5810

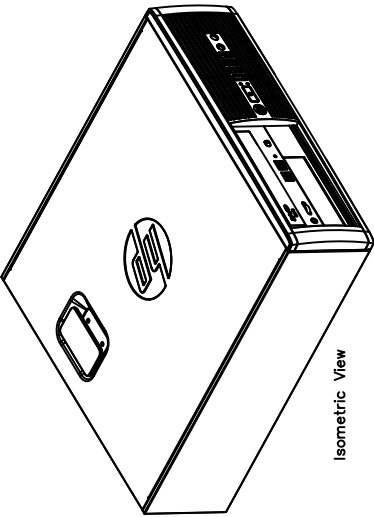


102.5
337



384
60
Required
Inst. space





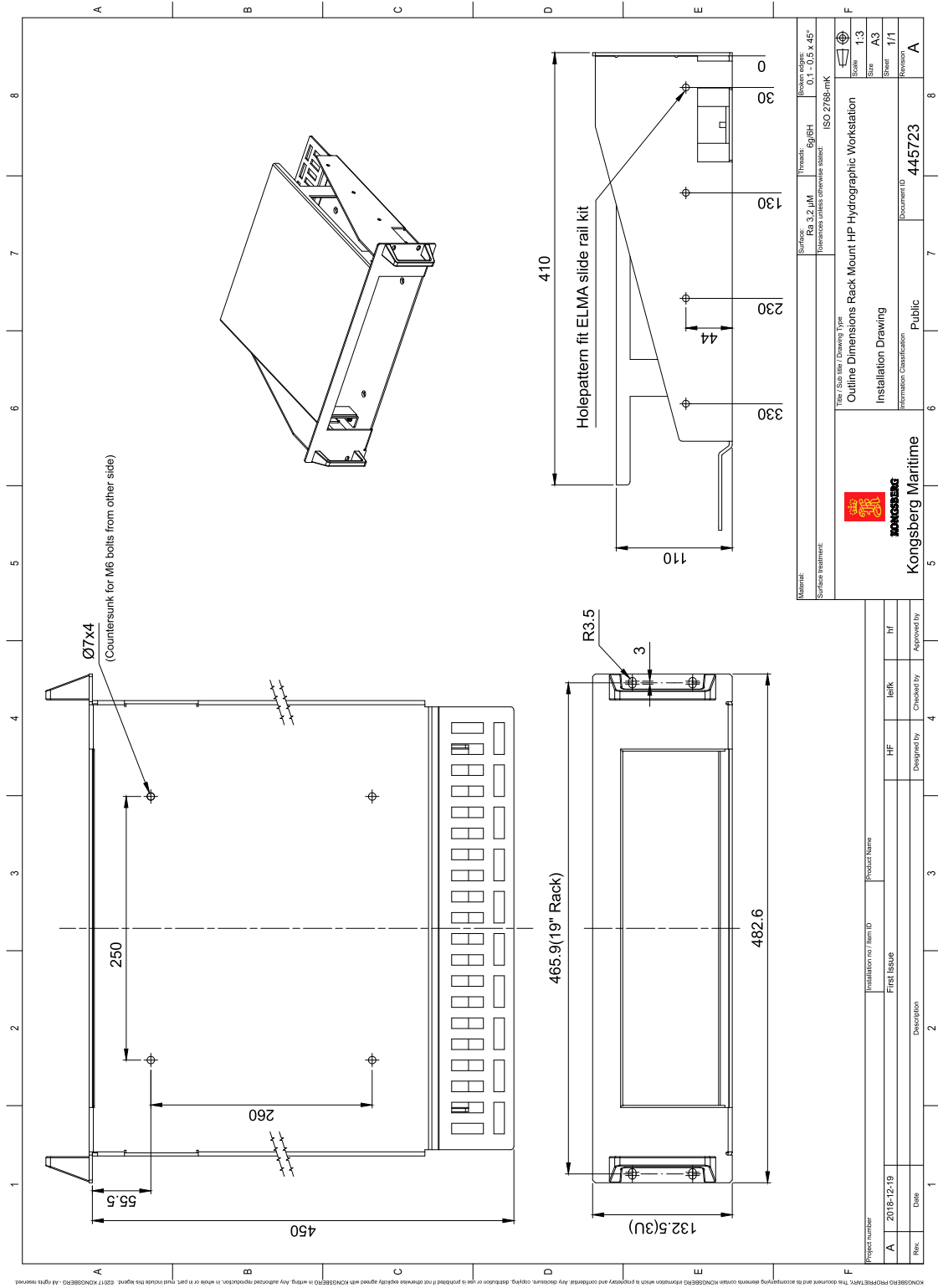
Isometric View

Weight approx. 8Kg

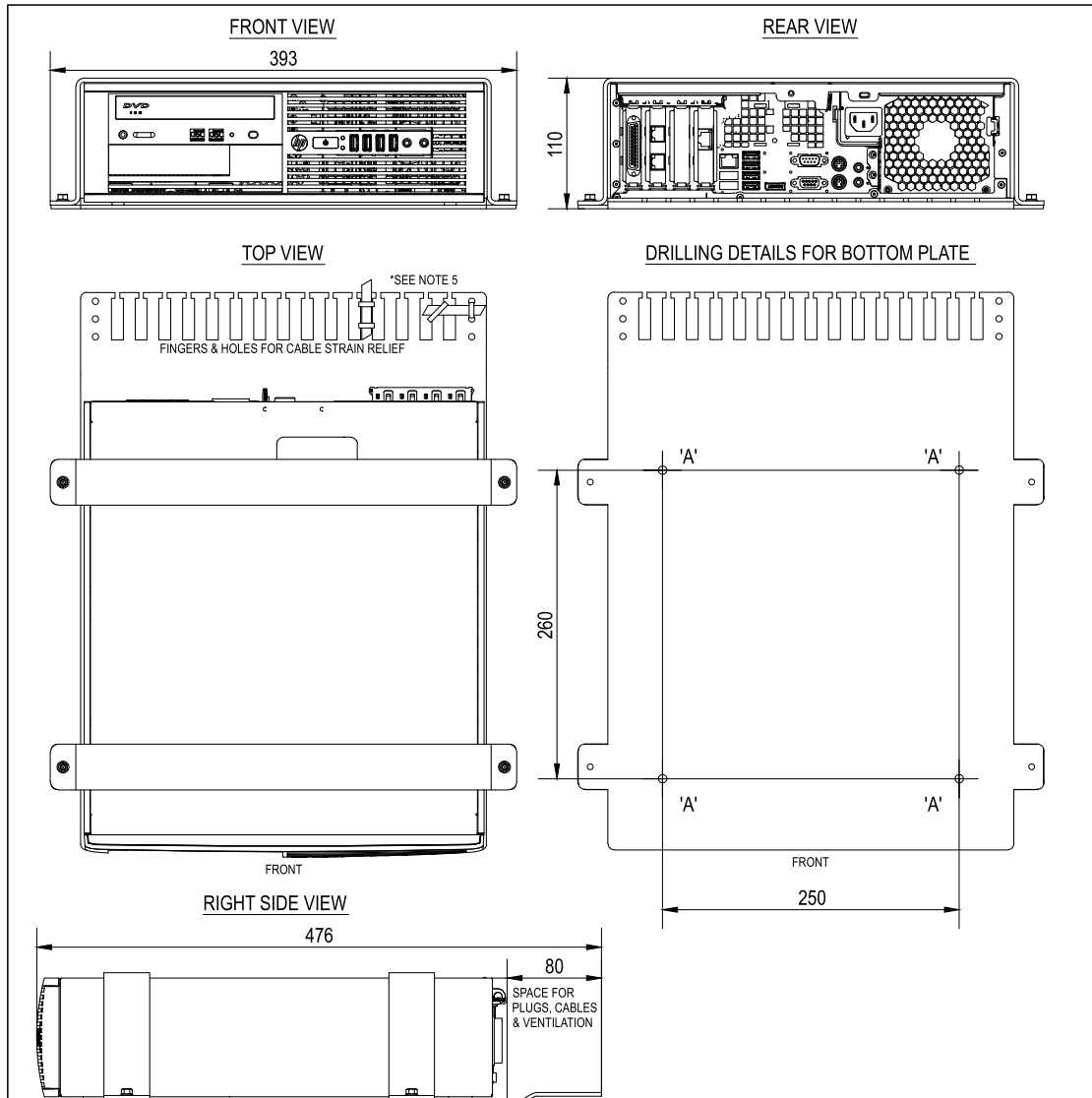
Reference documentation:
 Outline Desk Mounting: 366001
 Outline Rack Unit: 371591
 Rail Kit Rack Unit: 375288
 Instruction Manual Rack Unit: 372140
 Outline KM1000 Mounting Kit: 365290
 Outline Mariner Mounting Kit: 327993

REV: A	20121219	First issue	DESCRIPTION	HF	LK	IP
	DATE			Checked by	Checked by	Approved by
Material: EMX Surface Treatment: —			Class: Outline AS Subclass: AS 2700-mk Title: Outline Dimensions Part: MP8200H Subpart: HWS	Drawn by: 90/SH Surface: Rev.3	Class Code: 100416 Scale: 1/1 Size: A3 Sheet: 1-4	Project number: 378828 Drawing type: Outline Document ID: 378828
Project name: Kongsberg Maritime AS Subclass Division: MP8200H Location: Horten - Norway						
Project number: 378828 Drawing type: Outline Document ID: 378828						
Declaration: EMX (Production, distribution and utilization of this document is valid only for the intended application and for the intended customer. Any other use without express authorization is prohibited. Customers will be held liable for the payment of damages. All rights reserved. © 2012 Kongsberg Maritime AS)						

445723 Rack installation kit dimensions




365290 KM 1000 mounting kit dimensions



DIM. (WxHxD): 393x110x476 mm
 POWER SUPPLY: 100-240 VAC 50-60 Hz
 POWER CONSUMPTION, MAX: 120 Watt
 WEIGHT WITHOUT MOUNTING KIT: 7,6 kg
 WEIGHT WITH MOUNTING KIT: 8,6 kg

ASSEMBLY NOTES:

- 1) DRILL M6 HOLES IN MOUNTING SURFACE (4 OFF)
- 2) HOLE DETAILS: 'A': M6 CLERANCE
- 3) SECURE BOTTOM PLATE TO SURFACE USING M6 x 20 mm CSK SLT SCREW, WASHER & NUT (4 OFF)
- 4) SECURE THE CLAMPS (2 OFF) TO BOTTOM PLATE USING M5 LOCKING NUT AND WASHER (4 OFF)
- 5) SECURE ALL CABLES TO THE CABLE MANAGEMENT FINGERS AND HOLES USING TWO CABLE TIES PER CABLE
- 6) THE MOUNTING KIT CAN BE USED BOTH FOR HORIZONTAL AND VERTICAL MOUNTING

C	22.05.14	CO20712	FT	EB	ES
 Kongsberg Maritime AS Offshore Kongsberg		Title MPxxxx with KM1000 Mounting kit		Sheet 1/1 Size A4 Scale 1:5	
Project / Product name Basis		Project number -		Drawing type General Arrangement	
The reproduction, distribution and utilization of this document as well as the communication of its contents to others without express authorization is prohibited. Offenders will be held liable for the payment of damages. All rights reserved in the event of grant of a patent, utility model or design.				Document ID 365290	
					Revision C

Index

19-inch rack installation kit outline dimensions.....	46	MC330	28
		MC340	29
		full-size rack mount MC3xx	21
A			
about		H	
document downloads	5	how to	
online information	5	install the MP5810.....	31
registered trademarks.....	5	humidity	
target audience	5	requirements.....	42
this publication	5	HWS	
ac mains power		cable plan	10
requirements	41	front panel description	34
		MC3xx	7, 12
		MP5810	7
		outline dimensions drawing	44–45
		rear panel description.....	35
		Hydrographic Work Station	
		cable plan	10
		description	7
		environmental requirements.....	42
		front panel description	34
		MC330 connectors.....	26
		MC330 interfaces.....	26
		MC3xx	7, 12
		MP5810	7
		MP5810 connectors	37
		MP5810 interfaces.....	37
		outline dimensions.....	40
		outline dimensions drawing	44–45
		overview	7
		power requirements.....	41
		purpose	7
		rear panel description.....	35
		weight	40
		I	
		installation	
		MP5810	31
		installation requirements	
		environmental	42
		humidity.....	42
		temperature	42
		interconnection cables	
		list	11
		interfaces	
		HWS MC330.....	26
		HWS MP5810.....	37
		L	
		list	
		cables	11
		commercial cables	11
		connections	11
		interconnection cables.....	11
		shipyard cables.....	11
		system cables	11
C			
cable plan			
Hydrographic Work Station	10		
cable plan			
topside	10		
cables			
list	11		
commercial cables			
list	11		
connections			
list	11		
connectors			
HWS MC330	26		
HWS MP5810.....	37		
D			
description			
Hydrographic Work Station	7		
Hydrographic Work Station front panel	34		
Hydrographic Work Station rear panel.....	35		
dimensions			
Hydrographic Work Station	40, 44–45		
technical specifications.....	40		
dimensions drawing			
rack installation kit	46		
documentation			
downloading	5		
downloading			
documentation.....	5		
drawing			
Hydrographic Work Station	44–45		
rack installation kit	46		
E			
environmental			
requirements	42		
environmental requirements			
Hydrographic Work Station	42		
F			
front panel description			
Hydrographic Work Station	34		

- M**
- mains power requirements 41
 - MC330
 - connectors 26
 - front panel description 28
 - interfaces 26
 - MC340
 - front panel description 29
 - MC3xx
 - description 7, 12
 - installation 14, 16, 18
 - rack mount 18
 - VESA desk mount 16
 - VESA display mount 14
 - MC3xx full-size
 - installation 21
 - rack mount 21
 - MP5810
 - connectors 37
 - description 7
 - installation 31
 - interfaces 37
- O**
- online information
 - about 5
 - website 5
 - operating voltage
 - Hydrographic Work Station 41
 - outline dimensions
 - Hydrographic Work Station 40, 44–45
 - technical specifications 40
 - outline dimensions drawing
 - rack installation kit 46
 - overview
 - Hydrographic Work Station 7
- P**
- power
 - requirements 41
 - specifications 41
 - power consumption
 - Hydrographic Work Station 41
 - power requirements
 - Hydrographic Work Station 41
 - procedure
 - installing the MP5810 31
 - purpose
 - Hydrographic Work Station 7
 - this publication 5
- R**
- rack installation kit
 - outline dimensions 46
 - rack mount
 - MC3xx 18
 - rear panel description
 - Hydrographic Work Station 35
 - registered trademarks 5
 - requirements
 - ac mains power 41
 - environmental 42
 - humidity 42
 - mains power 41
 - power 41
 - supply power 41
 - temperature 42
- S**
- shipyard cables
 - list 11
 - size
 - Hydrographic Work Station 40
 - technical specifications 40
 - specifications
 - outline dimensions 40
 - power 41
 - specifications
 - weight 40
 - supply power
 - requirements 41
 - supply voltage
 - Hydrographic Work Station 41
 - system cables
 - list 11
- T**
- target audience
 - this publication 5
 - technical requirements
 - ac mains power 41
 - mains power 41
 - power 41
 - supply power 41
 - technical specifications
 - outline dimensions 40
 - weight 40
 - temperature
 - requirements 42
 - this publication
 - about 5
 - purpose 5
 - this user manual
 - about 5
 - purpose 5
 - topside
 - cable plan 10
- V**
- VESA desk mount
 - MC3xx 16
 - VESA display mount
 - MC3xx 14
- W**
- website
 - document downloads 5
 - online information 5
 - weight
 - Hydrographic Work Station 40

weight	
technical specifications.....	40
wiring diagram	
Hydrographic Work Station	10

©2022 Kongsberg Maritime