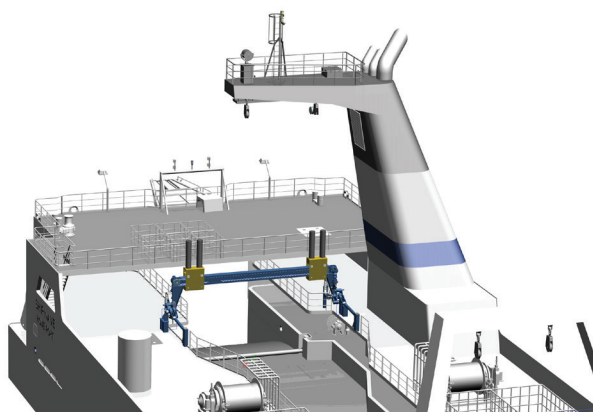


KONGSBERG MARITIME DECK MACHINERY

Wire Guide for trawler

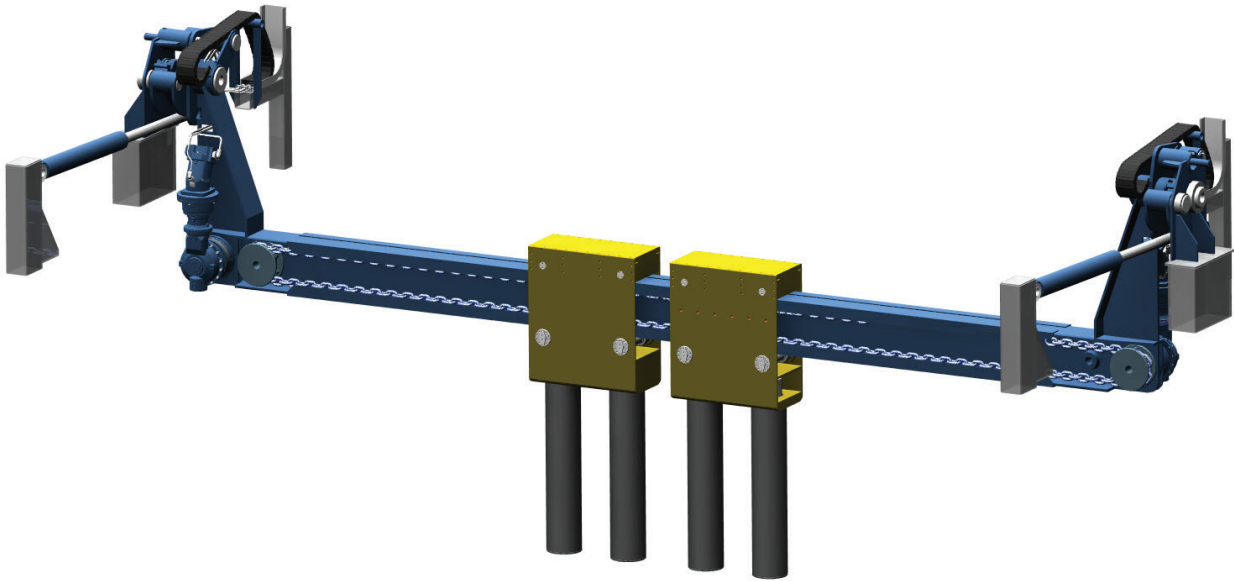
DESCRIPTION

- Secure a proper and safe spooling of net and sweep lines during launching- and haul of trawl gear.
- Consists of two trolleys mounted on a transverse guide beam supported at each ship side.
- Each trolley consist of two guide rollers for spooling, driven by hydraulic gear motors with pinion in conjunction with pitch rack for the transverse ship movement of trolleys.
- The trollies can be operated simultaneously or independent.
- The complete transverse ship guide beam can be rotated 180 deg. To move guide rollers away from working area on deck.
- Can be operated from two control panels, one on the bridge and one on trawl deck.

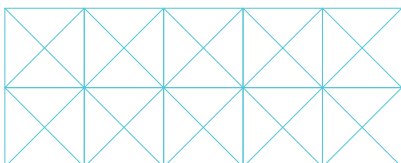
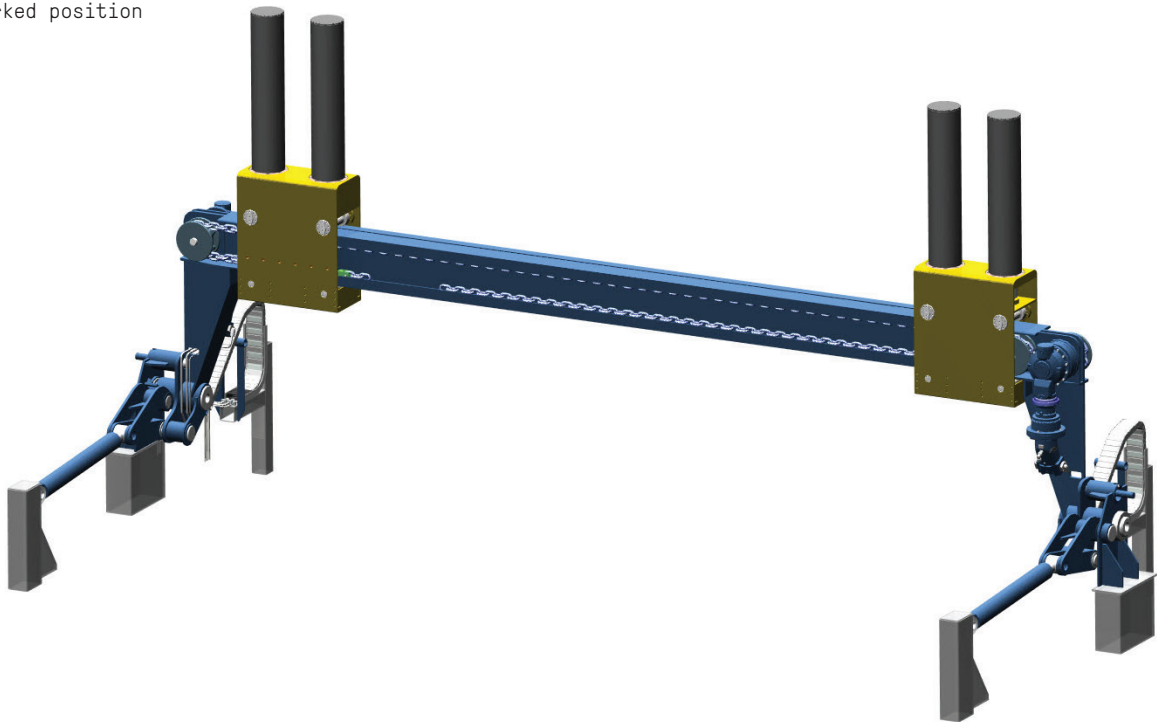


Parked position

Working position



Parked position



Kongsberg Maritime
P.O.Box 483, NO-3601
Kongsberg, Norway

Switchboard: +47 815 73 700
Global support 24/7: +47 33 03 24 07
E-mail sales: km.sales@km.kongsberg.com
E-mail support: km.support@kongsberg.com