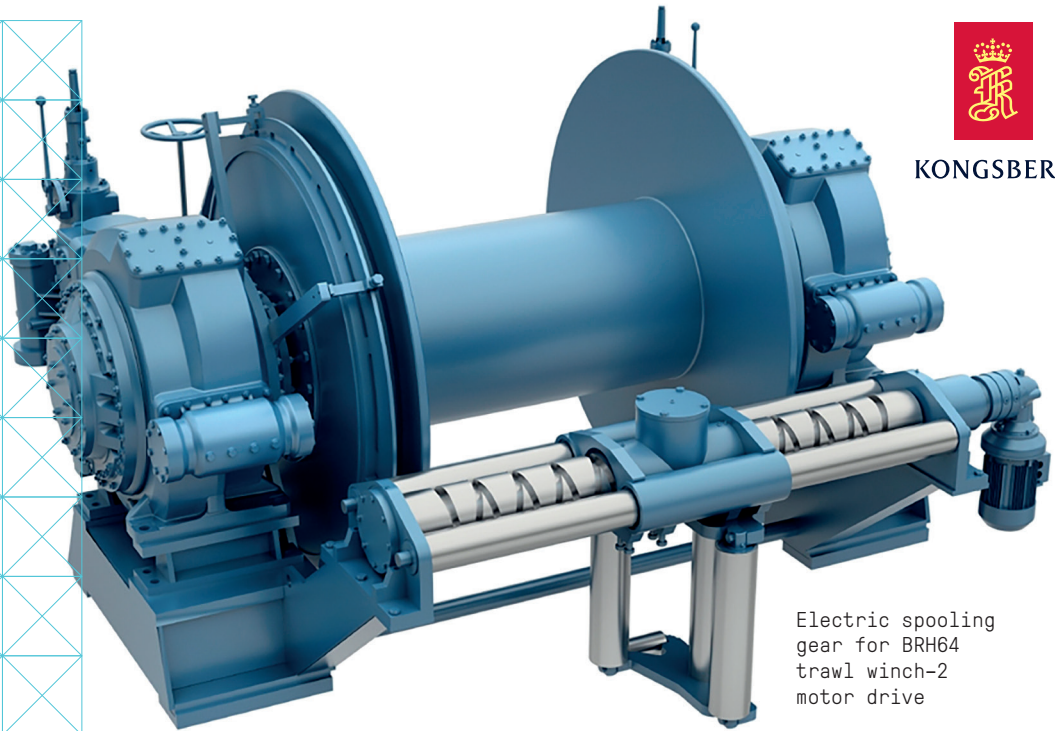


# ELECTRIC SPOOLING GEAR



KONGSBERG



Electric spooling gear for BRH64 trawl winch-2 motor drive

## DECK MACHINERY

### Fish and special purpose vessels. Electric spooling gear

#### Electric spooling gear with frequency drive

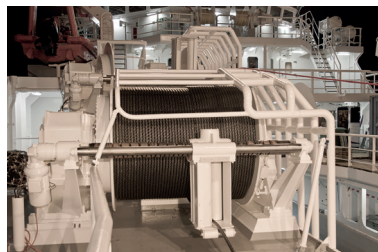
The spooling gear consists of a horizontal double threaded spooling screw with two guide shafts and shaft rollers. Spooling screw and shaft rollers are supported by one roller bearing bracket at each end.

The rotational speed of the electric motor is controlled by the frequency converter with feed back signals from pulse encoder (potmeter), mounted at one roller bearing support bracket.

Portable controller with cable for local control for spooling is included in scope.

The double treaded screw and guide shafts are made off Stainless steel material while guide rollers are made of harden tempered steel.

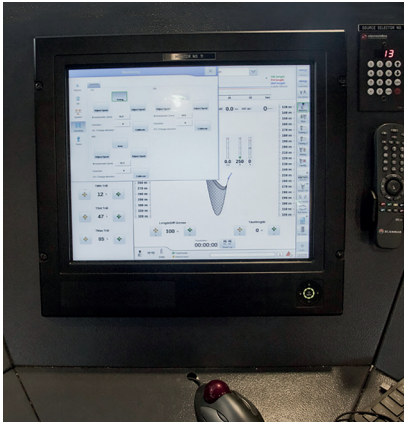
Replacing mechanical spooling gear on existing winches is off course possible and thus benefit from the advantages offered by electric spooling gear.



Electric spooling gear for AC drive geared trawl winch



Winch upgrade with electric spooling gear



Monitor for graphical user interface display



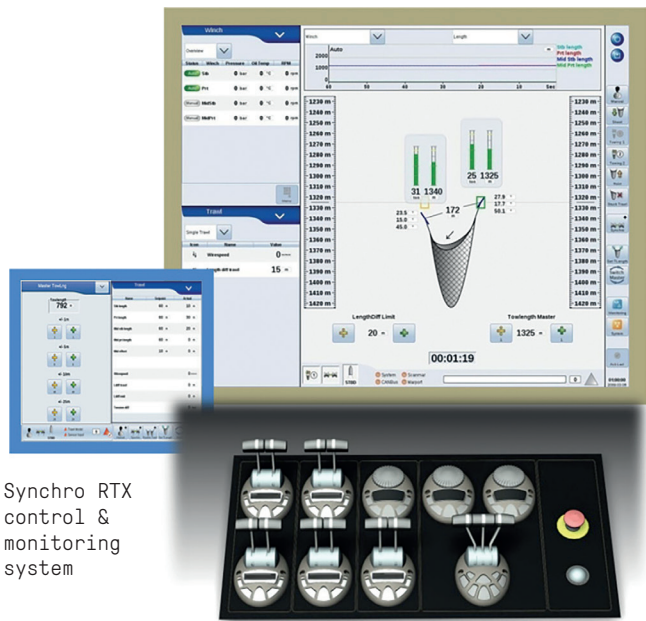
Control cabinet with frequency converter

### Control and monitoring system

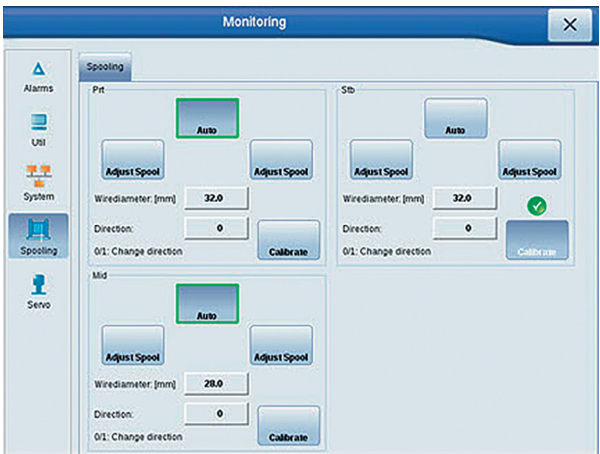
The function and operation of the electric spooling gear is controlled and monitored via the control cabinet and winch control system, Synchro RTX. The frequency converter is located in the cabinet with equipment for interface to spooling gear and winch control system, including power input and motor output. Filter unit for dust protection for converter is mounted on cabinet door. Braking resistor is mounted separately.

### Customer benefits compared to conventional mechanical spooling gear

- Good spooling independent of wire or rope dimensions
- Wire or rope diameter can easily be changed in Synchro RTX software
- Considerable reduction of wear and tear on wires and ropes, giving increased lifetime
- Reduced wear and tear on guide rollers
- No transmission between spooling gear and winch – increase winch capacity with 4%
- No transmission reduces number off mechanical parts and reduces maintenance costs
- Programmable spooling governed by Synchro RTX control and monitoring system for trawling
- Interchangeable with existing spooling device



Synchro RTX control & monitoring system



Synchro RTX include screen menu for spooling parameter input

