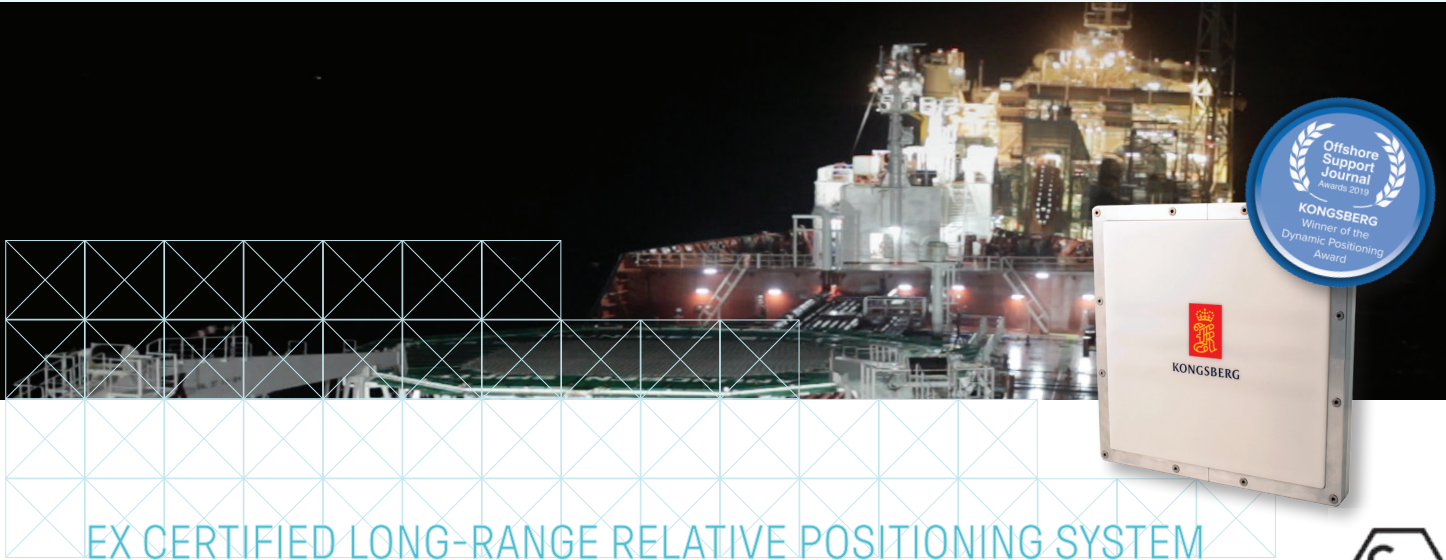


XPR[®] 100 EX



KONGSBERG



EX CERTIFIED LONG-RANGE RELATIVE POSITIONING SYSTEM



The XPR 100 is a microwave-based solution developed for DP applications in need of long-range relative positioning. With no moving parts and with its compact and lightweight design, installation is simple and quick.

Long-range operation

Operating in the 9.2-9.3 GHz band, the XPR 100 operates in all weather conditions, and has an unmatched performance in range and bearing accuracy. Each lightweight sensor unit has an opening angle of 100°.

Multiple sensor units

XPR 100 can be deployed as an omni directional system utilising several sensor units, in order to have an operational area of up to 280° dependent on the construction and operation. This provides an extended operational area as well as avoidance of blind angles.

Application software makes configuration and monitoring of the XPR 100 operation easy and effective. Interfaces to remote systems like Dynamic Positioning may either be serial lines or Ethernet based. XPR 100 is designed to fill the need specified by IMO for DP Class 2 vessels.

Automatic target selection

Targets are stored in the system, and continuous monitoring in all directions (area of operation) mitigates false target lock, and secures a very fast target acquisition.

Built-in system test and verification

Prior to an operation, the XPR 100 performs a check and verification of the system to secure a safe and efficient operation.

Ease-of-use HMI

The XPR 100 features a highly intuitive HMI enabling the operators to assess the quality of their positioning quickly and effectively during operation. For better visibility under different light conditions, the operator can easily

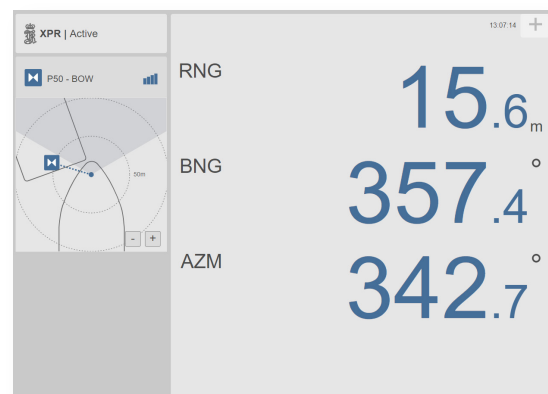
select between a set of colour palettes, including a well proven night display.

Complementary solution

KONGSBERG offers a range of different positioning solutions for use in DP operations. The XPR 100 is complementary to other solutions technology-wise and incorporates decades of experience and application understanding.

ATEX certification

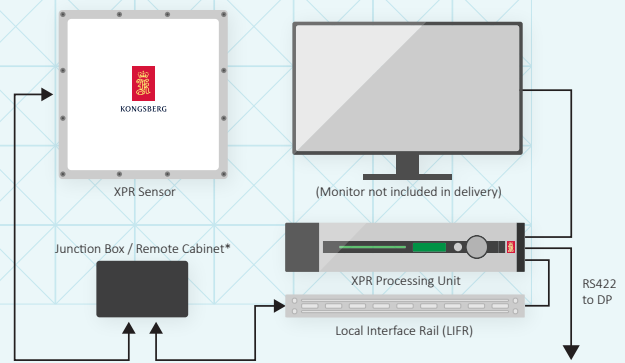
XPR 100 EX is suitable to be installed in hazardous locations where there may be an explosive mixture of flammable gases belonging to gas group II B and/or II A. XPR 100 EX can be used in hazardous zone 2. ATEX classification is II 3 G Ex ec II B T4 Gc.



HMI.

FEATURES

- No moving parts
- No regular maintenance
- Compact and light weight sensor units
- Easy and quick installation
- Support for multi-sensor site for extended operational area (100-280° coverage)
- Automatic built-in system test - prior to operation
- Automatic target selection
- Compatible with Artemis MK4, MK5, MK6
- Use of existing cable infrastructure possible
- Operates in all weather conditions



*Dependent on type of installation

TECHNICAL SPECIFICATIONS

XPR® 100 EX

PERFORMANCE

Operating range	10 m - 5 km
Range accuracy	1 m standard deviation
Range resolution	0.1 m
Range update rate	4 Hz
Bearing accuracy	0.02° standard deviation
Bearing update rate	4 Hz
Horizontal opening angle	± 50°
Vertical opening angle	25°
Operating frequency band	9.2 - 9.3 GHz

INTERFACES

XPR Sensor Unit	
Ethernet/LAN	1
XPR Processing Unit	
Serial ports	6 x RS-422/RS-232 (isolated)
Ethernet/LAN	4, RJ45
USB	3, 1 in front and 2 in rear

DATA OUTPUTS

Message formats	Proprietary NMEA 0183
Message types	PSXXPR, PSXRAD, Artemis BCD, Artemis ADB

WEIGHTS AND DIMENSIONS

XPR Sensor Unit	9.9 kg, 391 x 391 x 50 mm
XPR Processing Unit	5.4 kg, 88 x 485 x 412 mm

POWER SPECIFICATIONS

XPR Sensor Unit	24 V DC, max. 50 W
XPR Processing Unit	100 to 240 V AC, 50/60 Hz max. 60 W

ENVIRONMENTAL SPECIFICATIONS

XPR Sensor Unit

Operating temperature range	-25 °C to +55 °C
Storage temperature range	-40 °C to +70 °C
Operating humidity	100 %
Storage humidity	Max. 60 %
Enclosure protection	IP66

XPR Processing Unit

Operating temperature range	-15 °C to +55 °C
Storage temperature range	
Short term	-20 °C to +70 °C
Long term	+5 °C to +35 °C
Operating humidity	Max. 95 % non-condensing
Storage humidity	Less than 55 %
Enclosure protection	Front IP42, rear IP21

Mechanical

Vibration, all units	IEC 60945/EN 60945
----------------------	--------------------

Regulatory

Compliance to Radio Equipment Directive (RED)	2014/53/EU
---	------------

This implies compliance with applicable EMC and LVD standards.

Type Approval

DNV-GL certificate no. TA 00002DX

EX certificate

EU - Type Examination Certificate Number	DEKRA 20ATEX0020 X
--	--------------------

© Registered trademark USA

Specifications subject to change without any further notice.

KONGSBERG SEATEX

Switchboard: +47 73 54 55 00

Global support 24/7: +47 33 03 24 07

E-mail sales: km.seatex.sales@km.kongsberg.com

E-mail support: km.support.seatex@km.kongsberg.com

kongsberg.com/maritime



KONGSBERG