

ARF 126 ANCHOR RECOVERY FRAME



KONGSBERG MARITIME DECK MACHINERY

Anchor Handling Tug and Supply Safer deck operation

Technical specification

- Designed for anchors up to 200 Te weight.
- Max nominal towline tension: 200 Te
- Dynamic factor: 1,5
- Range of movement: 0 - 126°

The ARF 126 is based on a frame with a free rotating roller on top. The frame itself is actuated by two hydraulic cylinders, moving the roller from a flush to deck position to just above the stern rollers.

The standard design is suited to fit stern rollers with outer diameter $\varnothing 3500$ to $\varnothing 4500$ mm.

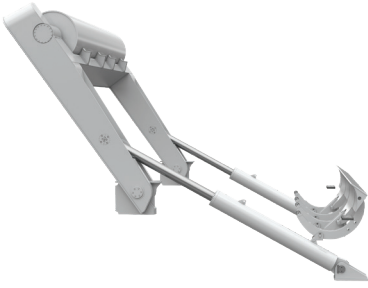
The complete unit is prepared for direct welding to the hull.

Hatches covering the gap, between roller and deck, when parked are mechanically operated.

Estimated time from parked to fully erected position is approx. 130 seconds.

PRINCIPLE

- Reduces forces and increase control during anchor launch and recovery
- Flush with deck when not in use
- Mechanical strength according to DNV No. 2.22 Standard for Lifting Appliances
- Interfaced to TowCon control system



Integrated in TowCon RT control system

ARF 126 is controlled from a speed Controller placed in the chair or panel on bridge. All vital information is presented on-screen.

By integrating control of the ARF in TowCon RT, the operator can control both the frame and the winch from the same workstation. This gives the operator full focus on the task at hand, and brings the anchor handling operations to a higher safety level!

Options

For vessels without TowCon RT, a stand alone control system for the ARF 126 can be delivered.



Winch operators chair with integrated controls

EL. HYDRAULIC POWER PACK (OPTINAL DELIVERY)

System pressure	260 bar
Flow rate	2 x 300 lpm
Oil volume	2400 l
Heat exchanger capacity	90 kW
Power supply options	380V - 50 Hz or 440V - 60 Hz 575V - 50 Hz or 690V - 60 Hz

