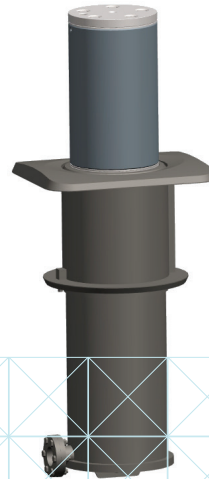
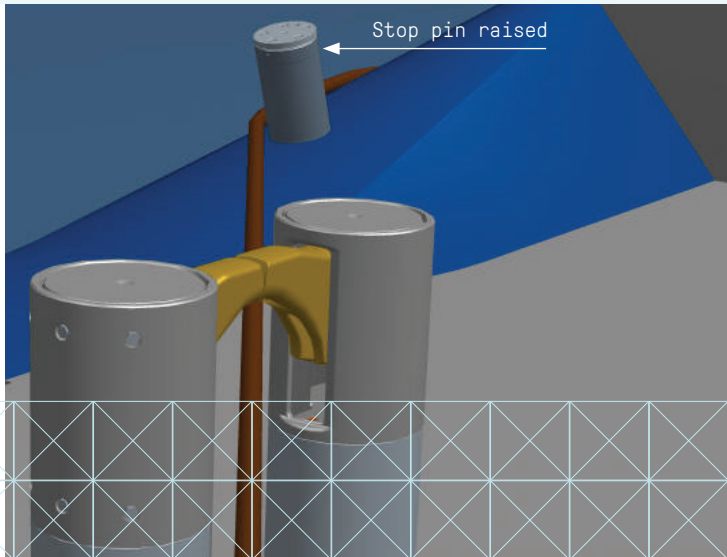


# STOP PINS



KONGSBERG



## DECK MACHINERY

Offshore supply and service, Safer deck operation, Stop pins

### Set of Kongsberg Maritime retractable stop pins with rotating liners

- SWL is 200 tonnes, 200 mm above hull structure
- Length of pins are 590 mm above hull structure, diameter of pins  $\varnothing 346$  mm
- Pins are fitted with rotating liners mounted on self-lubricating orkot bearings
- Hydraulic operated by the shark jaw/towing pins hydraulic power pack
- Net weight each: approx. 1100 kg

### Description and purpose

Stop pins or quarter pins, are fitted on the curved stern plating, a little outside the stern roller.

They are used to stop the towline from moving too far outwards and in some cases to park mooring lines outside them, preventing the mooring line from coming onto the stern roller.

The Kongsberg Maritime stop pin has a rotating roller to prevent wear on the stop pin or the line when the mooring line moves against it or when the stop pins are used while spooling.

27.DM-1 of 1-07.10.11

### KONGSBERG MARITIME

Switchboard: +47 815 73 700  
Global support 24/7: +47 33 03 24 07  
E-mail sales: km.sales@km.kongsberg.com  
E-mail support: km.support@kongsberg.com

[km.kongsberg.com](http://km.kongsberg.com)



KONGSBERG