

PLEASE REFER TO THE PI30 HYDROPHONE INSTALLATION MANUAL.

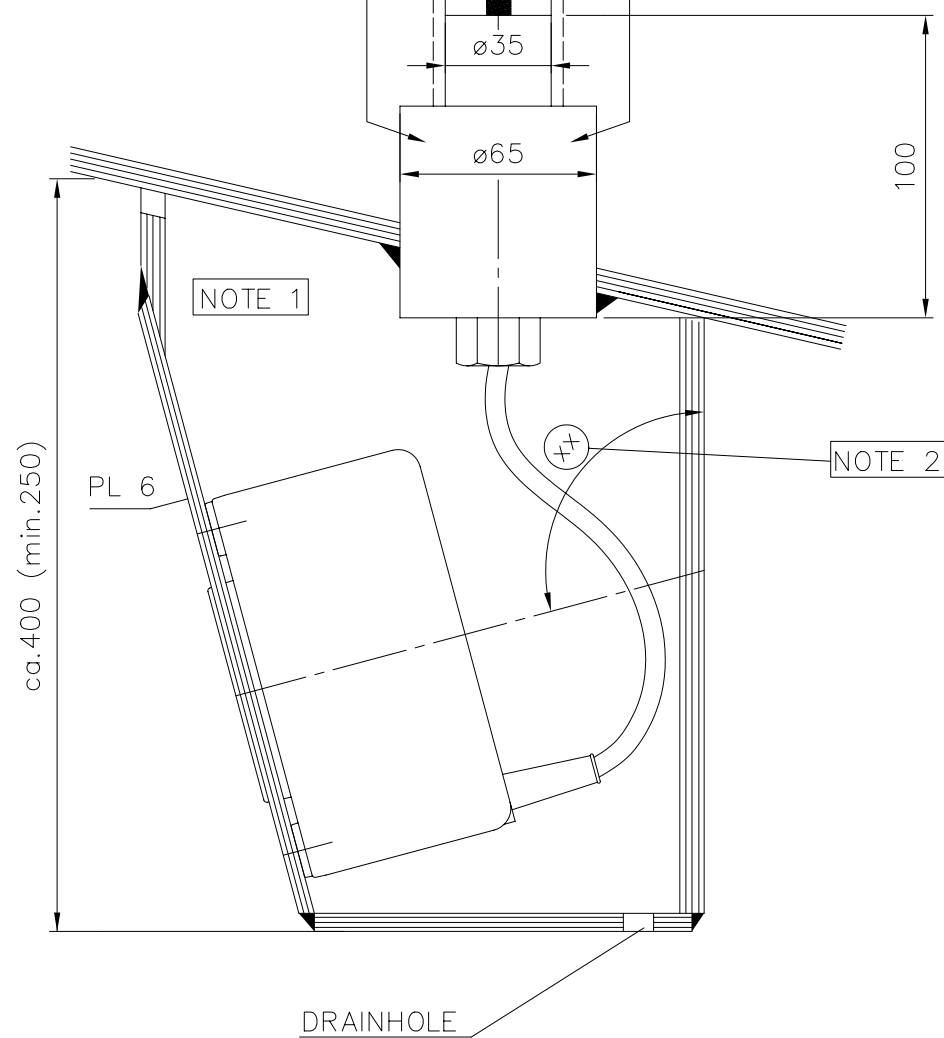
THE HYDROPHONE CABLE (6.5mm in diam. supplied in 22m length) IS TO BE PROTECTED WITH STEEL CONDUIT TO ABOVE WATERLINE.

SEE PI30 CABLE PLAN.

DNV APPROVED CABLE PENETRATION IN CARBON STEEL: St52.3 (EN 10025).
Simrad Simrad reg. no. 599-202216.

Welding to hull structures and structural support of the cable penetration is subject to individual approval for each installation.

Vessels which are not subject to classification societies can use the Simrad cable penetration, reg. no. 599-202182 in plastic (PA6.6).

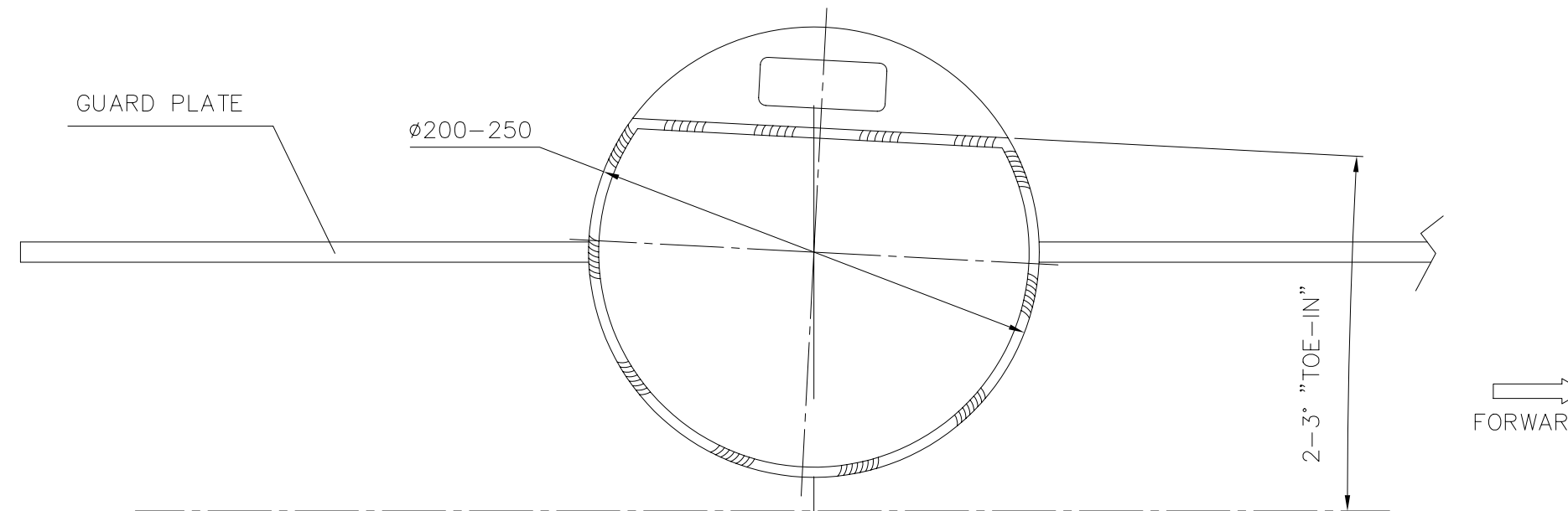


BLISTER CROSS SECTION SEEN FROM FWD.

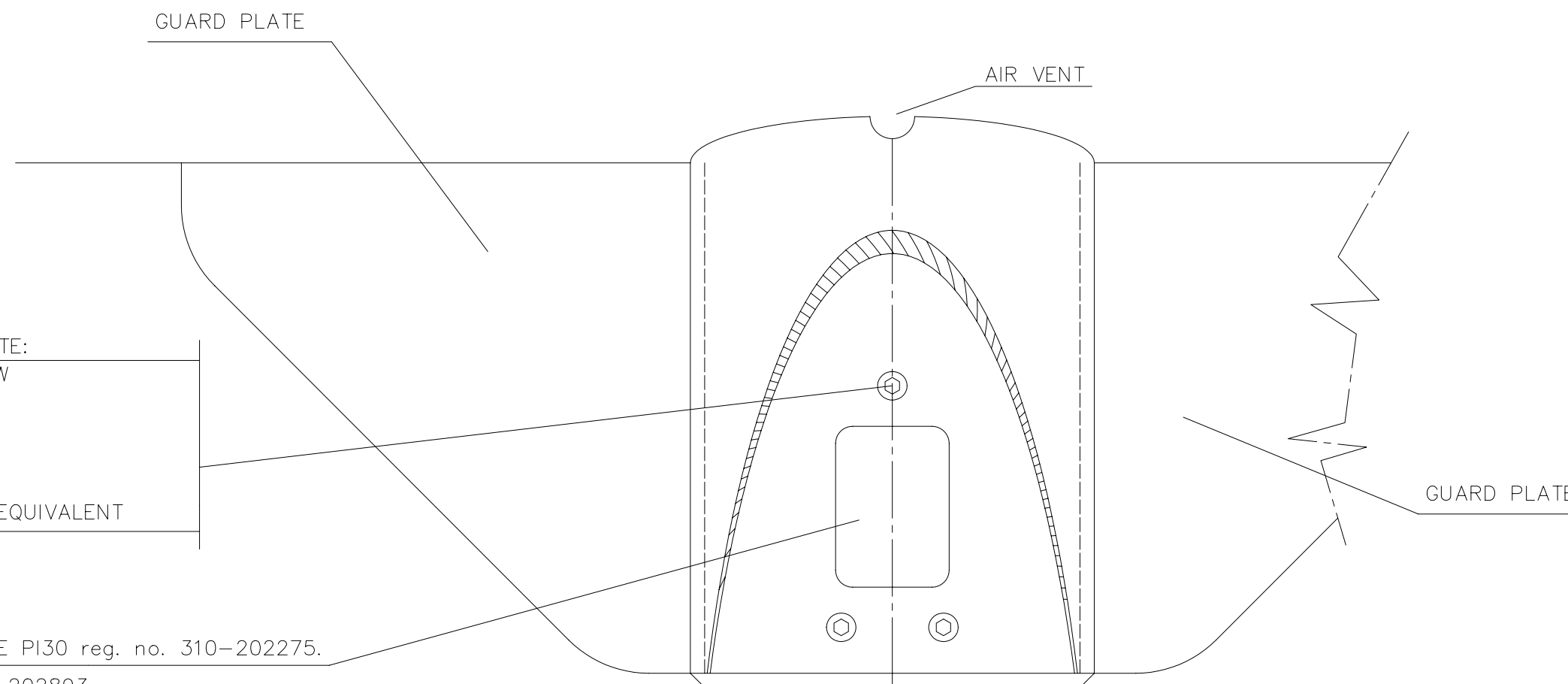
HYDROPHONE MOUNTING ON 6 mm STEEL PLATE:
USE M8x35 SOCKET COUNTERSUNK HEAD SCREW

IMPORTANT!
STUD TORQUE: 5Nm.
SECURE THE THREADS WITH LOCTITE 270 OR EQUIVALENT

PURSE HYDROPHONE PI30 reg. no. 310-202275.
SEE DRAWING: 830-202893



BLISTER SEEN FROM BELOW
(STARBOARD INSTALLATION)




BLISTER SIDE VIEW SEEN FROM STARBOARD SIDE.

After mounting of the hydrophone, all welding must be done carefully AND with cooling.

NOTE 1: Install the hydrophone on the same side of the vessel which the Purse Seine is set. These installation instructions and related drawings are for vessels shooting and pursuing to STARBOARD.

NB! NOTE 2: The beam angle of the hydrophone is 90° in the horizontal plane and 30° in the vertical plane. The recommended tilt angle ca. of 15°-25° is dependent on the application. Increase the tilt angle of the hydrophone as necessary to compensate for heel after shooting the purse seine.

THE BLISTER BUILT OF STEEL PIPE IS TO BE CONSTRUCTED BY THE YARD.

REV./SIGN.	B	BOW							
DATE	05.06.03								
PROJ. METHOD									
SCALE	1:2.5								
DRAWN	00.01.17	bøj							
CHECKED	00.02.16	IS							
APPROVED	00.02.16	KRA							
UNLESS OTHERWISE STATED, TOLERANCE:			DIM.: ISO 2768-mK		THREAD: 6g/6H		PARTS LIST: N.A.		 A KONGSBERG Company
HYDROPHONE IN BLISTER			HULL OF STEEL		PURSE HYDROPHONE		PI30		
SHEET 1 OF 1							SH.SIZE: A2	REV.: B	
FILE NO.: CAD02							821-203072		