

# ELECTRIC CAPSTANS



KONGSBERG



## KONGSBERG ELECTRIC CAPSTANS

### Available in different sizes for duties from 350 kg to 20 tonnes

#### SELF CONTAINED FOR DIRECT DECK SEATING

- Compact robust design
- Integral electric motor
- Simple deck mounting
- Extreme temperature operation, -40°C to 55°C
- For duties from 350kg to 20 tonnes
- Fixed speeds for heaving and veering irrespective of load
- Low noise and vibration signature
- Compliant to Lloyd's Rules for the classification of Naval Ships
- Qualification and survey according to other naval classification societies available as required by end user
- Ingress protection up to IP66

#### Designed to Naval Standards

The range of KONGSBERG electric mooring capstans are designed specifically for naval vessels.

Compact and robust construction means few wearing parts, minimum maintenance and simple installation.

The baseplate design can be varied to meet specific deck layouts.

The electric motor can be vertically mounted inside the capstan which permits direct bolting to the deck for ease of installation. The motor can also be horizontally mounted through a right angle gear box to avoid the requirement for a deck penetration. No further deck penetrations are required unless cable entry is required from below.

On larger mooring capstans drive is through a fully enclosed slew ring gear arrangement mounted on roller bearings for optimum efficiency with quiet running.

The three phase, multispeed induction motor incorporates a failsafe DC operated magnetic brake with easily replaceable friction pads and requires no adjustment - anti-condensation stand-still heating is standard.

#### Controller

Control of the capstans can be through a number of methods. The most common being a plug-in wanderlead controller or a pedestal controller.

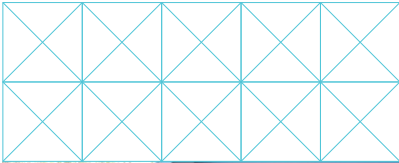
The plug-in wanderlead gives the advantage that the controller is not left out on the deck to sustain continuous weathering when the capstan is not in use. Additionally the operator may stand in different positions to allow for safe operation of the capstan.

The alternative pedestal controller is a simple to operate, single lever unit which provides speed and direction control for heave and veer. It is equipped with an integral anti-condensation stand-still heater and an emergency stop button.

#### Starter Panel

Installation and interface with the ship's systems is via a totally enclosed, bulkhead mounted starter panel.

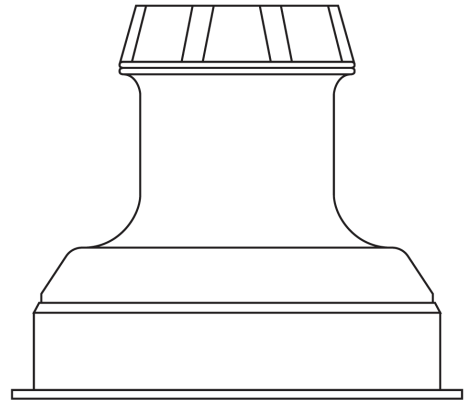
The panel houses direct on line contactors, relays and protection fuses for the unit. The panel door incorporates an interlocked and lockable safety supply isolator.



Vertical 350kg RAS Capstan



1.5te Bi-Directional Capstan



Typical Mooring Capstan

**COMPREHENSIVE  
CUSTOMISATION  
AVAILABLE.**

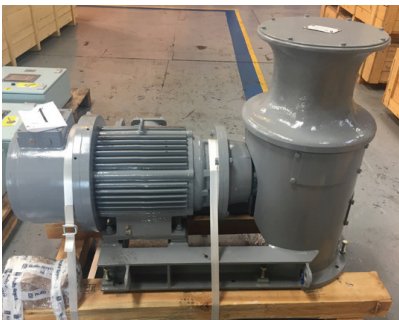
- Larger duty pulls available on request
- Variable speed control via AC drive available on request
- Available with both plug-in wanderlead and/or pedestal controllers
- Shock qualification according to naval standards
- A number of control options available including pendant, pedestal and foot pedal



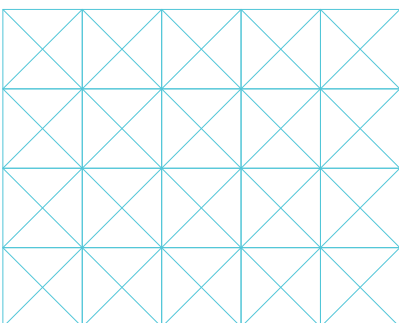
Example 5te Mooring Capstan



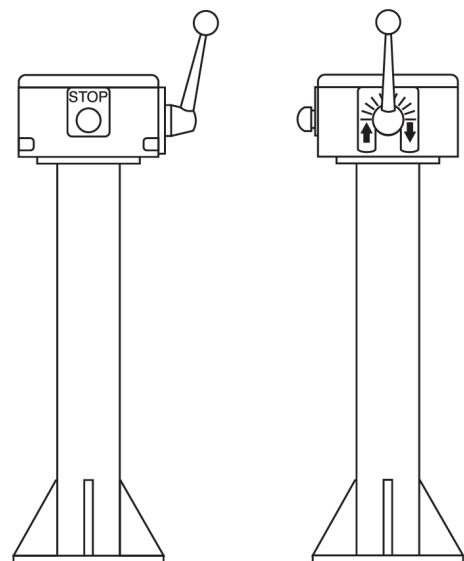
Example 16te Mooring Capstan



Horizontal 1.5te RAS Capstan



Typical Wander Lead Controller



Typical Pedestal Controller

Kongsberg Maritime  
P.O.Box 483, NO-3601  
Kongsberg, Norway

Switchboard: +47 815 73 700  
Global support 24/7: +47 33 03 24 07  
E-mail sales: km.sales@km.kongsberg.com  
E-mail support: km.support@km.kongsberg.com