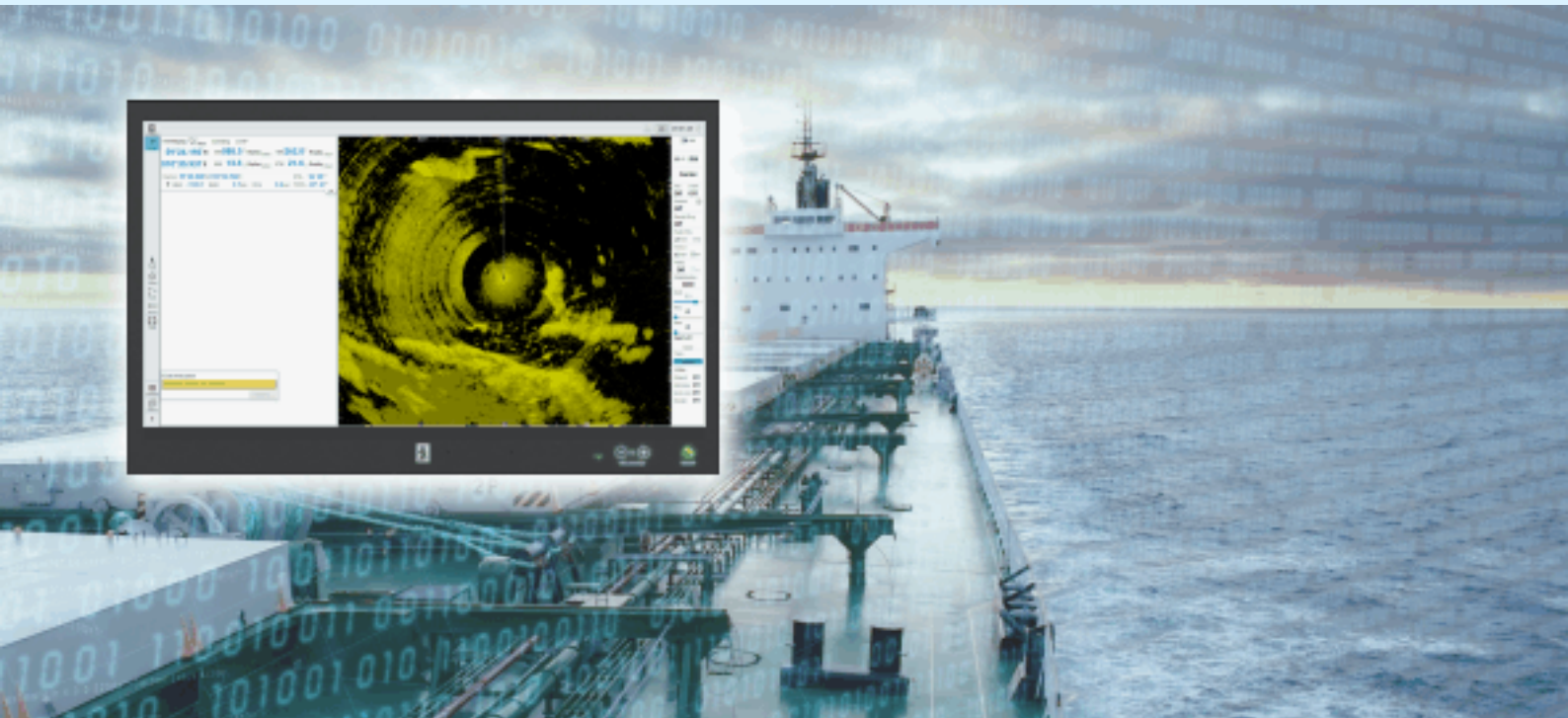


K-Bridge Radar Standalone



KONGSBERG



K-Bridge

Standalone radar navigation system

K-Bridge Radar Standalone is a self-contained navigation information system that provides the operator with radar video and target tracking as well as position, heading and other data from the vessel's navigation sensors.

It is designed to enable mariners to avoid collisions and generally to enhance their navigational awareness.

The system is easy to install, connecting directly to the ship's sensors and power, and (by two network adapters) to a digital radar interface.

Features

- High resolution colour display
- Attractive user interface
- Ergonomically designed operator panel

- Cost-efficient radar solution
- Easy installation
- 27" panel PC
- Optional chart underlay
- Manual and automatic clutter reduction
- Echo stretch
- Stern indicator
- Three colour palettes
- AIS targets
- Monitoring of sailing routes
- 11 range scales (0.125-96 NM)

Technical details

Panel PC

Resolution:	1920 × 1080 (FHD)
Colours:	16,7 million (maximum)
Viewing angle:	+/-89/89/89/89 degrees typical (up/down/left/right)
Contrast ratio:	3000:1 (typical)
Dimensions (27"):	650 × 437 × 74 mm
Dimensions (24" built-in only):	593 × 384 × 74 mm

Serial ports

Nine serial ports are available: 7 x input, 2 x input/output.

Three of the input ports are for:

- 1 x heading reference system
- 1 x speed log
- 1 x DGPS

The two I/O ports are for:

- 1 x BAM (Bridge Alarm Management) system
- 1 x NMEA serial output to VDR

Possible uses of the remaining serial input ports include:

- 1 x additional DGPS
- 1 x echo-sounder
- 1 x NAVTEX system
- 1 x radar
- 1 x AIS

Digital interface ports

Two digital interface ports are available for:

- 1 x UPS alarm
- 1 x BNWAS timer-reset signal

Ethernet ports

Up to 5 Gigabit Ethernet LAN ports are available for redundant connection to process LANs on the bridge.

VDR interface

VDR data is available over the LAN (IEC 61162-450) or using a combination of the display port (DP ++ 1.2 out) and the NMEA serial output port.

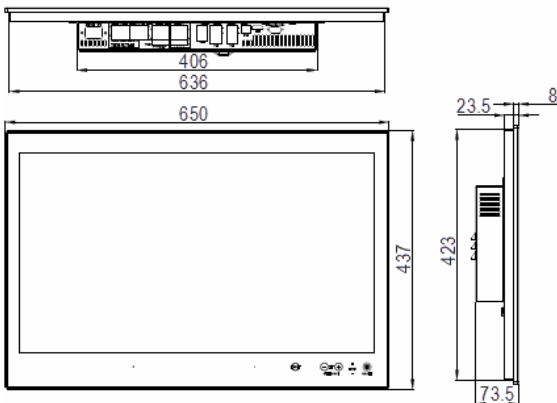
Electrical

Input voltage:	230 VAC ± 10 %
Frequency:	50/60 Hz ± 5 %
Power consumption:	198 W (typical)

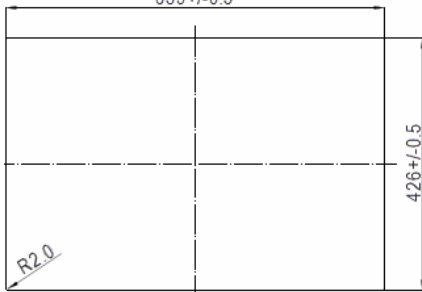
KM console

Dimensions (W x H x D):	654.0 × 1149.6 × 1013.2 mm
Weight:	Approx. 80 kg

PANEL PC 27"



CUTOUT



Note:
1. Recommended Panel thickness for Console mounting is 5mm.
2. Panel PC is adapted also for Table Mounting Bracket

TRACKBALL

