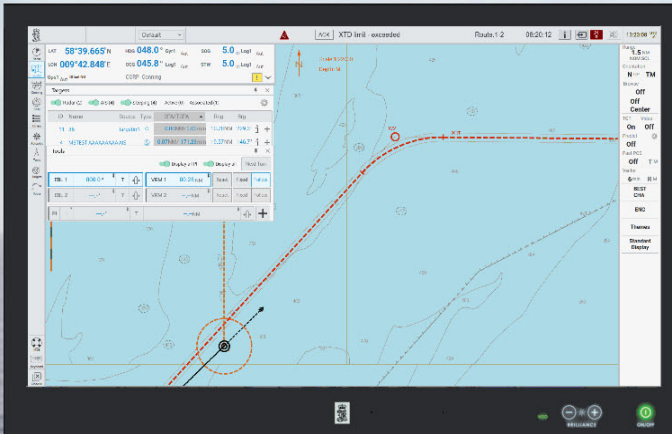


K-Bridge ECDIS Standalone



KONGSBERG



K-Bridge

Standalone ECDIS navigation system

K-Bridge ECDIS Standalone is a self-contained navigation information system that displays electronic charts along with position, heading and other data from the vessel's navigation sensors. It is designed to assist mariners in route planning and route monitoring and to enhance their immediate navigational awareness.

The system is easy to install - it just requires connection to the navigation sensors and power.

It has a simplified operator panel, containing an ergonomic trackball and two buttons for alarm handling.

The system supports all ENC official charts, including those available from Navor. It also accepts CM-93 vector charts from C-Map, and ARCS charts from the United Kingdom Hydrographic Office (UKHO).

Approvals

- K-Bridge ECDIS Standalone is MED certified by DNV.

Features

- Cost-efficient ECDIS solution
- Easy installation
- Type-approved 27" (or 24") panel PC
- Optional radar / AIS targets
- Route planning and validation
- At-a-glance presentation of sensor data and status
- Includes all ECDIS functions required by IMO
- Supports ENC S57 Ed. 3 charts and S63 security scheme
- Continuous monitoring of selected route plan
- Operator panel with trackball plus alarm sound-off and ACK buttons.
- ECDIS colour-calibration LED indicator
- Automatic selection of best available sensors
- Automatic colour calibration (on palette change)

Technical details

Panel PC

Resolution:	1920 × 1080 (FHD)
Colours:	16,7 million (maximum)
Viewing angle:	+/-89/89/89/89 degrees typical (up/down/left/right)
Contrast ratio:	3000:1 (typical)
Dimensions (27"):	650 × 437 × 74 mm
Dimensions (24" built-in only):	593 × 384 × 74 mm

Serial ports

Nine serial ports are available: 7 x input, 2 x input/output.

Three of the input ports are for:

- 1 x heading reference system
- 1 x speed log
- 1 x DGPS

The two I/O ports are for:

- 1 x BAM (Bridge Alarm Management) system
- 1 x NMEA serial output to VDR

Possible uses of the remaining serial input ports include:

- 1 x additional DGPS
- 1 x echo-sounder
- 1 x NAVTEX system
- 1 x radar
- 1 x AIS

Digital interface ports

Two digital interface ports are available for:

- 1 x UPS alarm
- 1 x BNWAS timer-reset signal

Ethernet ports

Up to 5 × 1 Gigabit Ethernet LAN ports are available for redundant connection to process LANs on the bridge.

VDR interface

VDR data is available over the LAN (IEC 61162-450) or using a combination of the display port (DP ++ 1.2 out) and the NMEA serial output port.

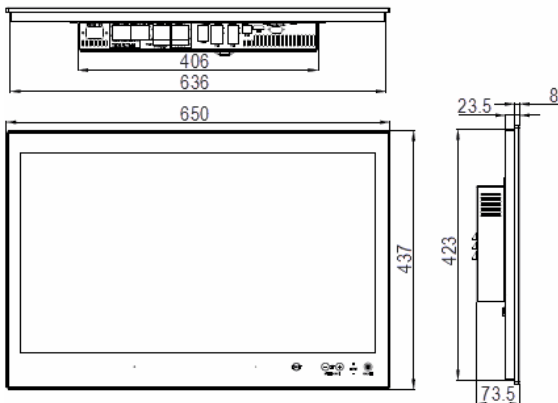
Electrical

Input voltage:	230 VAC ± 10 %
Frequency:	50/60 Hz ± 5 %
Power consumption:	198 W (typical)

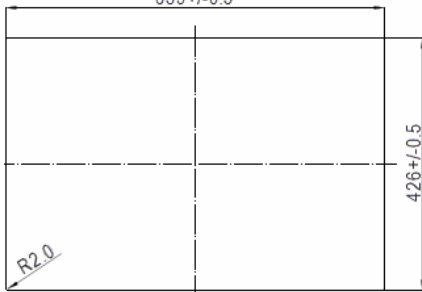
KM console

Dimensions (W x H x D):	654.0 × 1149.6 × 1013.2 mm
Weight:	Approx. 80 kg

PANEL PC 27"



CUTOUT



Note:

1. Recommended Panel thickness for Console mounting is 5mm.
2. Panel PC is adapted also for Table Mounting Bracket

TRACKBALL

