

TOWCON RT CONTROL SYSTEM



KONGSBERG

DECK MACHINERY

Offshore supply and service TowCon RT control system

TowCon RT control system

- TowCon RT is a Kongsberg Maritime winch control system - specially designed for our larger range of anchor handling vessels
- TowCon RT is fully based on Kongsberg Maritime common control platform technology
- TowCon RT control units have a compact ergonomic design with integrated pushbuttons for all key functions



TowCon RT control units

TowCon RT control units have a compact ergonomic design with integrated pushbuttons for all key functions. Both the speed and the tension control include functions as command transfer, alarm, torque step, coupling and brakes. Mounted on the bridge control panel and in the arm rest on the winch operator chair. Because of the design they can be located close to the winch operator, hence making them easy to reach and operate.

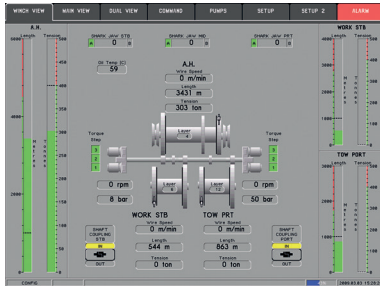
TowCon RT display

TowCon RT display is a marine type touch screen common for all the winches. The main view gives information and a graphical representation of the drums and motors on main winch and shark jaw load. Separate views can be selected for more detailed information, alarms, functions and settings.

On the winch operating chair there is mounted a 10,4" touch screen computer panel. This gives you the view of the winches you control from the speed controls in the operator chair. Together with the well arranged bridge control panel and the control units, ensures that the TowCon RT control system contributes significantly to safe operations on the ship.

FEATURES

- Cold and hot redundancy PLC
- Redundant power supply
- Prepared for e-operations
- Logging
- Communication with RR safer deck equipment
- Error detection
- Fully scalable
- Redundant fibre optic Ethernet

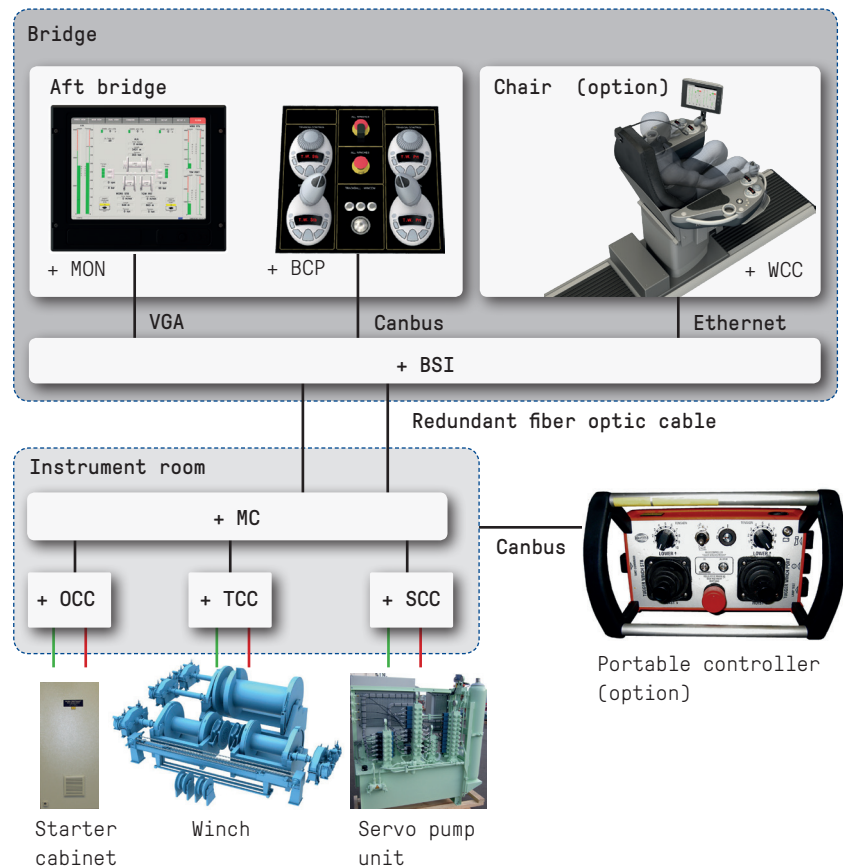


Winch view in the graphical user interface

Possible interface to

- DP system
- Maintenance System
- NMEA-interface
- Power Management System.
- Portable controllers
- Additional speed controllers
- Winch operating chair
- Central Alarm System
- Extra monitoring

TowCon RT system overview



TowCon RT control system comprises the following units

UNIT	DESCRIPTION	FUNCTION	SIZE (W X H X D)
+BCP	Bridge Control Panel	Speed and tension controls Emergency stop/release	425 x 390 x 150 Max four units per control system
+BSI	Bridge System Interface	Application CPU	One unit per control system
+MU	Monitoring Unit	Touch screen mounted on chair. Connection to speed/tension controls on chair	10,4"
+MON	Monitor	Touch screen mounted on aft bridge	19"
+MC	Main Cabinet	Application CPU	1000 x 1000 x 300
+TCC	Towing Control Cabinet	I/O cads (DI, DO, AI, AO, HSI)	1000 x 1000 x 300 / 760 x 760 x 300 One unit per control system
+OCC	Oil Control Cabinet	I/O cads (DI, DO, AI, AO)	800 x 1000 x 300 / 380 x 380 x 210 One unit per control system
+SCC	Servo Control Cabinet	I/O cads (DI, DO, AI, AO)	800 x 1000 x 300 / 380 x 380 x 210 One unit per control system
+WCC	Winch Control Chair	Speed/tension controls and 10,4" monitor	One unit per control system
+RT	Radio Transmitter	Transmitter for portable controller	
+RR	Radio Reciever	Reciever for portable controller	

