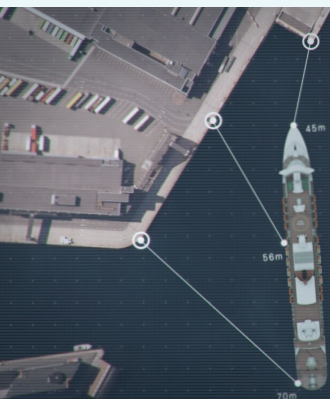


# PROXIMITYVIEW 100



KONGSBERG



## VISUALIZE THE SITUATION

The KONGSBERG ProximityView offers dynamic stitching of several KONGSBERG KCC and such delivery a stitched 360 degrees camera coverage of the proximity zone overlaying sensor data into the view, such as: obstacles, distances, velocities, and planned path. The navigator can easily change between a simulated bridge view, birds-eye view or other configurable views suiting a specific operation. A typical use for ProximityView will be during docking and departure. With the use of traditional CCTV cameras, it is difficult for a navigator to judge the distance to quay, this is often solved with the use of bridge wings in ship design. Using KONGSBERG ProximityView however, the navigator will have full control of the steel to quay distances from the comfort of his normal steering position, or a shore control centre.

## TECHNICAL SPECIFICATIONS

### PERFORMANCE

Fuse up to 16 camera sources  
Direct screen output through HDMI  
Remote screen output to Proximity View 100 Remote client

### I/O

6x Gigabit Ethernet on the rear I/O panel  
2x USB 3.0 headers for front panel access  
6x USB 3.0 ports on the rear I/O panel  
1x PS/2 KB/Mouse combo port on the I/O backpanel

### WEIGHTS AND DIMENSIONS

ProximityView Processing Unit 177 x 479 x 385 mm  
Weight 16 kg

### POWER

Supply voltage 100-240 V AC 50/60 Hz  
Max power consumption 500 W  
Power Connector C19

### ENVIRONMENTAL SPECIFICATIONS

Operational temperature range +5°C to +55°C  
Storage temperature range -20°C to 70°C  
Humidity Max 95% non-condensing

### STANDARDS AND REGULATIONS

#### Electromagnetic compatibility

Compliance to EMC, immunity/emission IEC 60945/EN 60945

#### Product safety

Compliance to LVD, standard used IEC 60950-1/EN 60950-1

Specifications subject to change without any further notice.

November 2021

### KONGSBERG SEATEX

Switchboard: +47 73 54 55 00  
Global support 24/7: +47 33 03 24 07  
E-mail sales: km.seatex.sales@km.kongsberg.com  
E-mail support: km.support.seatex@km.kongsberg.com

[kongsberg.com/maritime](http://kongsberg.com/maritime)



KONGSBERG