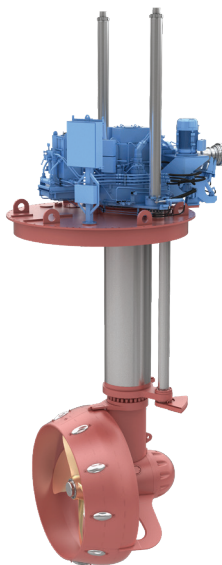
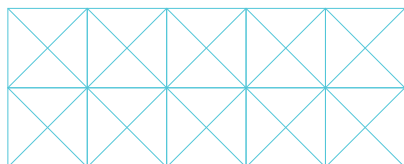
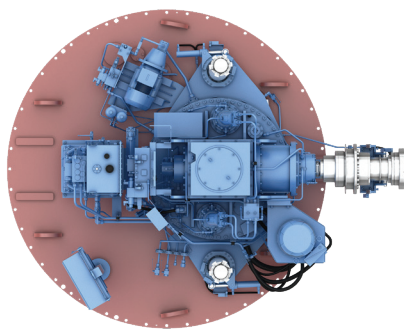


RETRACTABLE THRUSTERS, TYPE UL



KONGSBERG

KONGSBERG AZIMUTH THRUSTERS

Retractable thrusters, type UL

TECHNICAL DATA

| | HORIZONTAL DRIVE MOTOR (TYPE UL) | | | | | | | | |
|-------------------------------|----------------------------------|-----------|-----------|-----------|----------|----------|----------|----------|----------|
| | UL 601 | UL 901 | UL 155P12 | UL 155P14 | UL 205 | UL 255 | UL 305 | UL 355 | UL 60 |
| Max. input power kW (non DNV) | 440 | 725 | 1100 | 1300 | 1900 | 2500 | 3300 | 3800 | 5000 |
| Max. input power kW (DNV) | 400 | 660 | 880 | 1200 | 1500 | 2200 | 3000 | 3700 | 5000 |
| Input speed rpm | 1500-1800 | 1000-1800 | 750-2000 | 750-1800 | 750-1800 | 750-1800 | 750-1600 | 720-1200 | 750-1200 |
| Prop. dia mm | 1300 | 1600 | 1800 | 2000 | 2500 | 2800 | 3000 | 3500 | 4000 |
| Weight tons | 6 | 12 | 17 | 24 | 29 | 47 | 66 | 97 | 120 |
| Weight tons | 78 | 125 | 193 | 232 | 355 | 455 | 572 | 701 | 924 |
| A | 625 | 710 | 870 | 870 | 1010 | 1109 | 1415 | 1400 | 1615 |
| B | 1945 | 2295 | 2820 | 3150 | 3565 | 4239 | 4535 | 5180 | 5800 |
| C | 3500 | 4220 | 5000 | 5450 | 6200 | 7265 | 8150 | 8955 | 10490 |
| D | 1940 | 2340 | 2740 | 2940 | 3480 | 3900 | 4250 | 4970 | 5700 |
| E | 2740 | 3280 | 4010 | 4365 | 5200 | 5700 | 6415 | 6655 | 7925 |
| F | 825 | 1015 | 1105 | 1230 | 1675 | 1660 | 1775 | 2075 | 2380 |

NOTE:

All data subject to change without propr notice.

Max. Input power depends on the vessel type, operation profile, classification society and input rpm.

Final thruster size selection to be confirmed by CoE, Rauma.

Kongsberg Maritime
P.O.Box 483, NO-3601
Kongsberg, Norway

Switchboard: +47 815 73 700
Global support 24/7: +47 33 03 24 07
E-mail sales: km.sales@km.kongsberg.com
E-mail support: km.support@km.kongsberg.com