

CRE2-189



KONGSBERG



The Cordis Array II (CRE2) product family meets the demands for tactical missions where reliable high capacity communication and data transfer are crucial for efficient and safe execution. The system operates in C-band and is field proven with high data rate communication over distances in excess of 200 kilometers¹. Phased array technology with electronic beam steering and narrow radiation beams enables long-range broadband communication unmatched by conventional tactical systems.

Robust with encryption

The CRE2 enables robust high-speed data, voice and video transfer between multiple nodes in an ad hoc network. The CRE2 units handle signal obstructions providing stable and robust wireless connections for tactical operations in rural areas. The CRE2 units can in addition operate up to distances in excess of 200 kilometers in line of sight conditions. Wireless link protected with embedded AES-256 encryption implemented in hardware.

Connecting remote nodes

The CRE2 connects squads and their resources with a high capacity digital communication channel. QoS handles low latency data streams and high priority sensor streaming. The system may transfer encrypted data from a diverse selection of operational sources. Utilizing live video, location data and other sensors, remotely situated teams can work together seamlessly. Coordination of activities for optimal performance and safety ensures operational success.

IP connectivity

CRE2 technology supports complex operations that may involve a large number of information nodes and diverse information streaming between all nodes in a network. End-to-end IP connectivity provides cost efficient integration and an interoperable solution for seamless data exchange.

Easy to install

The unit is easy to install, comprising only the unit itself and Ethernet/Power connection through a single connector.

Easy to operate

CRE2 is an ad-hoc tactical network that requires no extra infrastructure or equipment. This makes it a simple solution to use and maintain, enhancing efficiency in coordinated operations. The electronic phase array system operating at microwave frequencies with narrow antenna beams has a jamming robustness unmatched by conventional tactical data links

¹

Line of sight application at 7 Mbps

FEATURES

- Phased array wireless data-link
- IP based
- Ad hoc network
- AES-256 link encryption embedded in hardware
- High bandwidth
- Long range
- Field proven
- Radio and antennas integrated in the product
- Easy to install and operate
- For mobile platforms:
 - Vessels
 - Command Post



TECHNICAL SPECIFICATIONS

CRE2-189

ELECTRICAL PARAMETERS

Power supply 19-55 VDC
 Data interface Ethernet 10/100baseT
 Connector MIL-DTL-38999

WIRELESS PARAMETERS

Available data capacity 15 Mbps
 Wireless encryption AES-256

RF SPECIFICATIONS

Frequency band 4900 MHz to 5900 MHz

MECHANICAL PARAMETERS

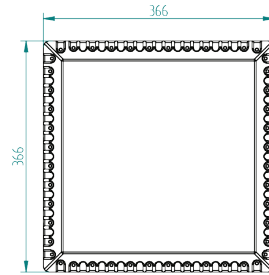
Size 366 x 366 x 137 mm
 Weight 12.5 kg (Antenna)
 2.8 kg (Mounting bracket)
 Color Light grey (RAL7040)

EMC

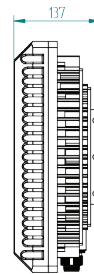
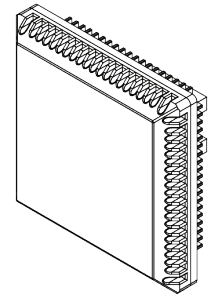
Radiated emissions MIL-STD-461F RE102
 Conducted emissions MIL-STD-461F CE102
 Radiated emissions, spurious & harmonics MIL-STD-461F RE103

ENVIRONMENTAL

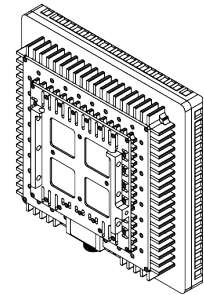
Ambient operational temperature range -40 °C to +55 °C



Front view



Side view



Back view

KONGSBERG SEATEX

Switchboard: +47 73 54 55 00
 Global support 24/7: +47 33 03 24 07
 E-mail sales: km.seatex.sales@km.kongsberg.com
 E-mail support: km.support.seatex@kongsberg.com

kongsberg.com/maritime



KONGSBERG

Specifications subject to change without any further notice.