

CRE2-179-AM



KONGSBERG



The Cordis Array II (CRE2) product family meets the demands for tactical missions where reliable high capacity communication and data transfer are crucial for efficient and safe execution. The system operates in C-band and is field proven with high data rate communication over distances in excess of 200 kilometers¹. Phased array technology with electronic beam steering and narrow radiation beams enables long-range broadband communication unmatched by conventional tactical systems.

Robust with encryption

The CRE2 enables robust high-speed data, voice and video transfer between multiple nodes in an ad hoc network. The CRE2 units handle signal obstructions providing stable and robust wireless connections for tactical operations in rural areas. The CRE2 units can in addition operate up to distances in excess of 200 kilometers in line of sight conditions. Wireless link protected with embedded AES-256 encryption implemented in hardware.

Connecting remote nodes

The CRE2 connects squads and their resources with a high capacity digital communication channel. QoS handles low latency data streams and high priority sensor streaming. The system may transfer encrypted data from a diverse selection of operational sources. Utilizing live video, location data and other sensors, remotely situated teams can work together seamlessly. Coordination of activities for optimal performance and safety ensures operational success.

IP connectivity

CRE2 technology supports complex operations that may involve a large number of information nodes and diverse information streaming between all nodes in a network. End-to-end IP connectivity provides cost efficient integration and an interoperable solution for seamless data exchange.

Easy to install

The unit is easy to install, comprising only the unit itself and Ethernet/Power connection through a single connector.

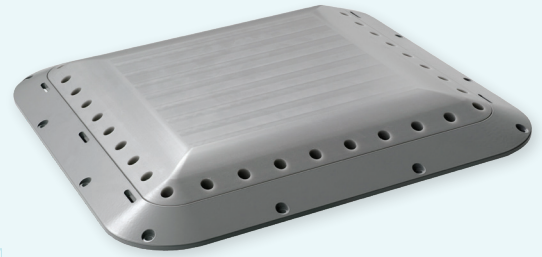
Easy to operate

CRE2 is an ad-hoc tactical network that requires no extra infrastructure or equipment. This makes it a simple solution to use and maintain, enhancing efficiency in coordinated operations. The electronic phase array system operating at microwave frequencies with narrow antenna beams has a jamming robustness unmatched by conventional tactical data links.

¹ Line of sight application at 7 Mbps

FEATURES

- Phased array wireless data-link
- IP based
- Ad hoc network
- AES-256 link encryption embedded in hardware
- High bandwidth
- Long range
- Field proven
- Radio and antennas integrated in the product
- Easy to install and operate
- For manned aircrafts and helicopters



TECHNICAL SPECIFICATIONS

CRE2-179-AM

ELECTRICAL PARAMETERS

Power supply	19-55 VDC
Data interface	Ethernet 10/100baseT

WIRELESS PARAMETERS

Available data capacity	15 Mbps
Wireless encryption	AES-256

RF SPECIFICATIONS

Frequency band	4900 MHz to 5900 MHz
----------------	----------------------

MECHANICAL PARAMETERS

Size	371 x 377 x 53.2 mm
Weight	5 kg
Color	Light grey (RAL7040)

EMC

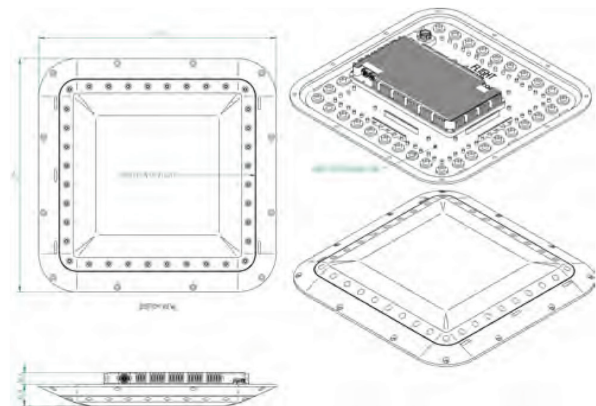
Radiated emissions	MIL-STD-461F RE102
Conducted emissions	MIL-STD-461F CE102
Radiated emissions, spurious & harmonics	MIL-STD-461F RE103

ENVIRONMENTAL

Ambient operational temperature range	-60 °C to +55 °C
Environmental testing of avionics	RTCA DO-160G

Front view

Back view



Side view

KONGSBERG SEATEX

Switchboard: +47 73 54 55 00
Global support 24/7: +47 33 03 24 07
E-mail sales: km.seatex.sales@km.kongsberg.com
E-mail support: km.support.seatex@km.kongsberg.com

kongsberg.com/maritime



KONGSBERG