

# RUDDER ANGLE INDICATING SYSTEM

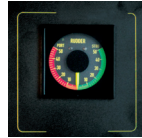


KONGSBERG

## BRIDGE

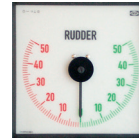
### Console mounting type

IP22/IP56  
with/without dimmer



144x144

IP22  
with/without dimmer



144x144

### Ceiling mounting type

IP22  
with/without dimmer



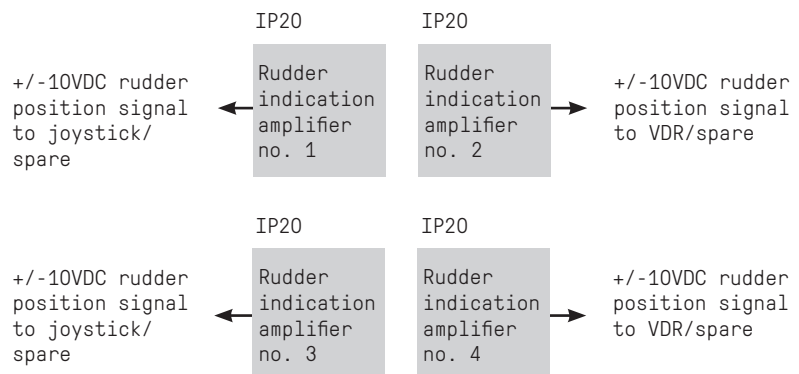
Ø370

### Bulkhead mounting type

IP66  
with dimmer



235x175



## RUDDER ANGLE SYSTEM CONTENTS

- Panorama type for ceiling mounting (IP22).
- Console mounting types (IP22/IP56).
- Bulkhead mounting types (IP66).
- Rudder angle indicator amplifiers (IP20).
- Feed back potentiometers in feed back units (IP44).

## KONGSBERG STEERING GEAR

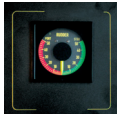
# Rudder angle indicating system, twin rudder

### General

The rudder angle indication system provides continuous indication of the steering gear (rudder) actual position. According to SOLAS and IMO requirements two fully redundant separate systems for each rudder are required. Both console mounting and bulkhead mounting types are available.

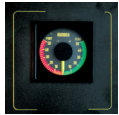
## ENGINE CONTROL ROOM

IP22



144x144

IP22



144x144

## STEERING GEAR ROOM

Feed back  
unit  
no. 1

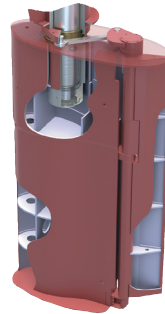
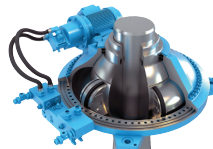


IP44

IP66



235x175



Feed back  
unit  
no. 2

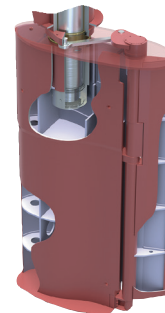
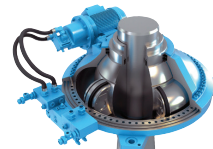


IP44

Feed back  
unit  
no. 3



IP44



Feed back  
unit  
no. 4



IP44

IP66



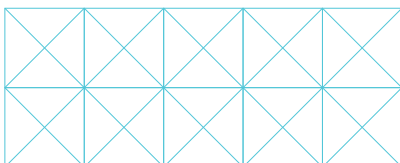
235x175

### Description

- Panels for console mounting types are provided with overlay (color RAL 9011).
- Different dimensions incl. Panama canal requirements.
- Scales with hanging and standing pointer.
- With or without dimmer.
- The systems are provided with rudder angle amplifiers for mounting inside bridge console.
- Feed back potentiometers mounted in feed back units.
- Power supply 24VDC external supply (50W) for each system.
- Accuracy according to class 1,5.
- Rudder angle indicators are type approved by MED (Marine Equipment Directive).

### Interface

- Galvanic isolated +/-10VDC feed back signals for each rudder are available for VDR and DP.



Kongsberg Maritime  
P.O.Box 483, NO-3601  
Kongsberg, Norway

Switchboard: +47 815 73 700  
Global support 24/7: +47 33 03 24 07  
E-mail sales: km.sales@km.kongsberg.com  
E-mail support: km.support@km.kongsberg.com