

STEERING CONTROL SYSTEM

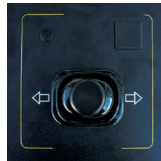


KONGSBERG

BRIDGE

Bridge wings/aft/auxiliary

NFU, IP22/IP56



144x144

FU, IP22/IP56



144x144

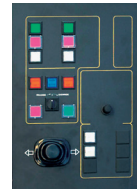
Bridge panels

IP22



144x240

IP22



240x336

IP22



240x336

Start/stop 2 pumps
Option: Selection between two rudder angles

- Start/stop 2 pumps
- NFU-steering
- Emergency steering
- Mode selection

Option: Selection between two rudder angles

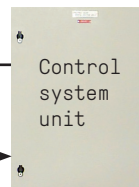
- Start/stop 2 pumps
- FU-steering
- Emergency steering
- Mode selection

Option: Selection between two rudder angles

+/-10VDC rudder order signal and/or on/off rudder order signal to VDR

+/-10VDC from autopilot

IP44



Voltage free pump running contacts to VDR

Helmsman, IP22



288x1192

OPTIONS

- Deliver complete systems or portion of these.
- Number of steering station according to customer requirements.
- Selection between low/high rudder angle.
- Rudder automatic to zero when going astern.
- Emergency steering cabinet (necessary when normal emergency steering in steering gear room is not possible due to space limitation).
- Control system for tankers above 100.000 dwt according to IMO requirements.

KONGSBERG STEERING GEAR

Steering control system, single rudder vessel

General

The steering control system is designed according to latest SOLAS and IMO requirements. It is type approved by DNV, BV, GL, LRS, RINA and ABS (for other societies, approval is achieved from case to case). We have both steering control systems for solenoid operated valves and frequency controlled pumps/motors by use of frequency converter. Non-follow-up (NFU) steering and follow-up steering (FU) are available (FU only for frequency operated pumps). Systems for single rudder vessels and twin rudder vessels are available.

ENGINE CONTROL ROOM

Indication panel

IP22

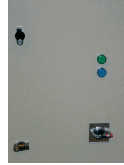


144x144

STEERING GEAR ROOM

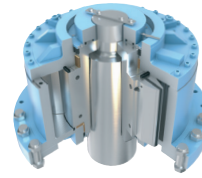
Motor controller
no. 1

IP44



Feed back
unit
no. 1

IP44



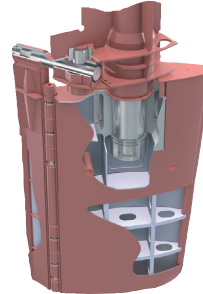
Feed back
unit
no. 2

IP44



Motor controller
no. 2

IP44



Steering system contents

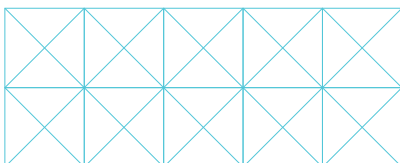
- Main control panel with pump start/stop, emergency steering, NFU/FU-steering, mode selection, selection between low/high rudder angle.
- Control panels on bridge wings, aft and auxiliary steering position with NFU/FU-steering and mode selection.
- Control system unit for bulkhead mounting on the bridge or adjacent to.
- Pump indication panels for desk mounting in engine control room.
- Motor controllers for bulkhead mounting in the steering gear room.
- Feed back units mounted on the steering gear.

Description

- Control panels are provided with overlay (color RAL 9011), flush mounted components connected to printed circuit boards and with terminal plate wired to panel with 1.6m cable.
- Control system unit (color RAL 7035) with following functions: emergency steering circuit, start/stop, alarm signals, selection of steering stations/modes, interface to external steering systems and to VDR.
- Motor controllers (color RAL 7035) for start/stop of pump units, transfer of remote steering and start/stop signals, voltage free alarm contacts, isolating switch and switch for selection between remote control, stop and local control.
- Feed back units with limit switches and feed back potentiometers.
- The system is powered internally from motor controllers.

Interface

- Autopilot, signal type from autopilot: voltage free digital contacts (NFU) or +/-10VDC analogue signal each rudder (FU).
- Voyage data recorder (VDR), signal type to VDR: +/-10VDC analogue and or digital steering command signal, voltage free pump running contacts.



Kongsberg Maritime
P.O.Box 483, NO-3601
Kongsberg, Norway

Switchboard: +47 815 73 700
Global support 24/7: +47 33 03 24 07
E-mail sales: km.sales@km.kongsberg.com
E-mail support: km.support@km.kongsberg.com