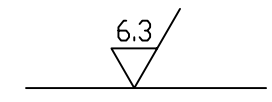
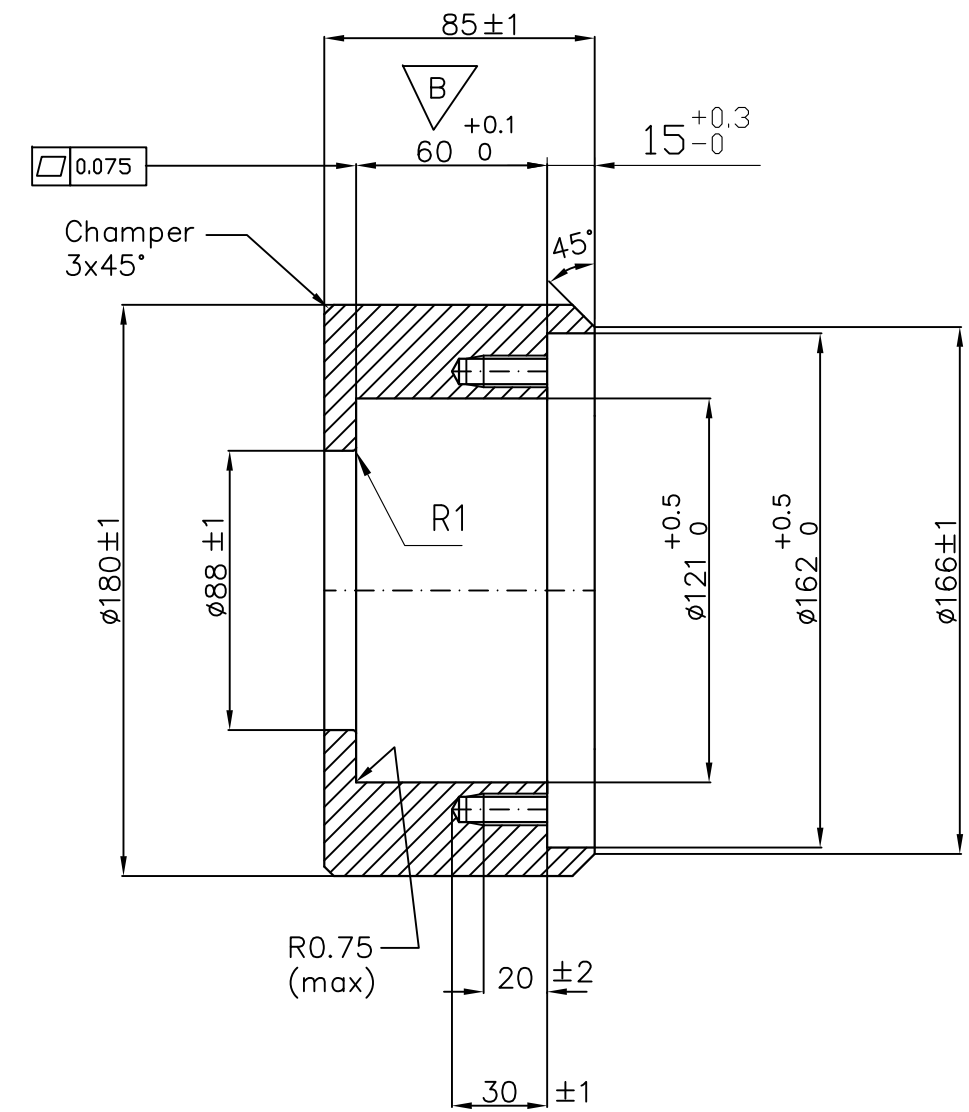


NOTE: The SELF-LOCK threads which are marked with SL* must be made in accordance to the SIMRAD procedure 842-202125.

SELF-LOCK taps can be supplied by SIMRAD.

SURFACE TREATMENT:

1. SAND BLASTED TO SA 2.5
2. ONE COATING OF RED FERRIC OXIDE PRIMER



MATR.: STEEL TUBE, ST.52-3N (DIN 17121); $\phi 193.7/\phi 83.7$ x100

REV./SIGN.	B	OMJ	C	BOW						
DATE	2001.11.27		2015.12.17							
PROJ. METHOD			UNLESS OTHERWISE STATED, TOLERANCE: DIM.: ISO 2768-mK THREAD: 6g/6H			PARTS LIST: 599-204448	SIMRAD			
SCALE	1:2.5		MOUNTING RING			SHEET 1 OF 1	SH.SIZE: A4	REV.:		
DRAWN	2000.11.27		TW	TRANSDUCER			871-204449		C	
CHECKED	2000.12.14		BØJ							
APPROVED	2001.02.06		FT	ES200-7C			FILE NO.: -			