

QUICK REFERENCE GUIDE

Simrad EQ60

To start the echo sounder

- Switch power on.
- Allow the software to start.
- The echo sounder will automatically resume the same operational mode as it held when it was switched off.

Changing the settings

- Use the trackball to move the cursor

to the required area on the display.

- Click the right button on the trackball.
- When the dialogue box appears, select the correct setting(s) using the left button.
- Click **OK** to close the dialogue box.

Depth range (4) and **Gain control** (3) may also be adjusted using the “wheel” on the trackball.

Changing the borders

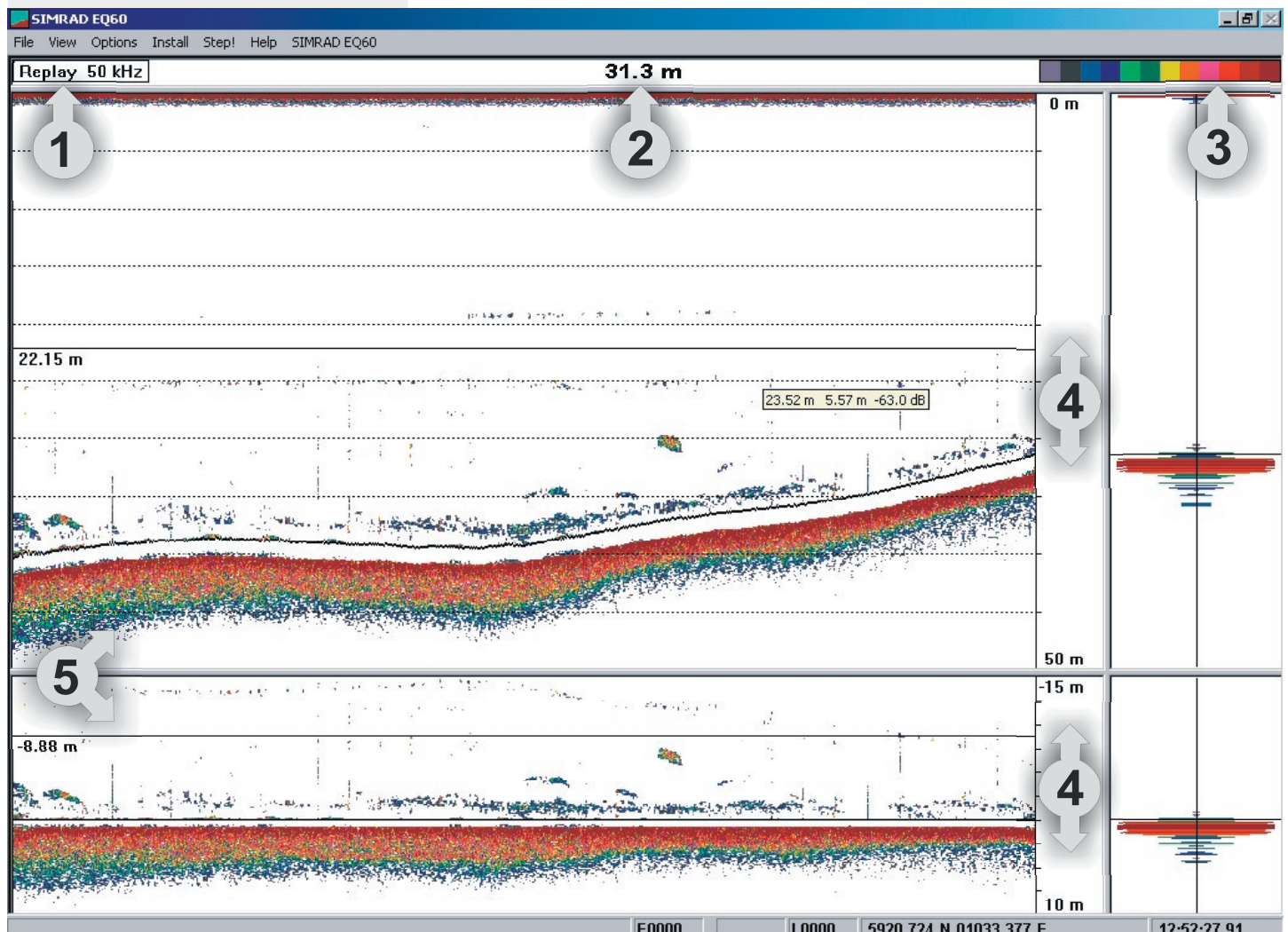
- Position the cursor on any horizontal or vertical border line. Observe that the cursor changes shape.
- Press and hold the left button, and move the border line with the trackball.
- Release the button when the new border position is set.

Display areas

- 1) Output power and pulse length
- 2) Minimum/Maximum depth and Bottom detection and Alarms
- 3) Gain control: *School, Fish* or *Bottom*
- 4) Depth range setting
- 5) Echogram settings

Removing display colours

- Place the cursor on the colour bar (3).
- Click the left button on the trackball on a chosen colour to remove it from the display
- Click again to restore it.



Simrad AS

Strandpromenaden 50

P.O.Box 111

NO-3191 Horten

Norway

Telephone: +47 33 03 40 00

Facsimile: +47 33 04 29 87

www.simrad.com

SIMRAD
A KONGSBERG Company

ALWAYS AT THE FOREFRONT OF TECHNOLOGY