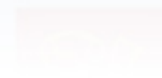




KONGSBERG

KONGSBERG



CONNECT Communication System

WORLD CLASS – through people, technology and dedication

CONNECT Communication System

Purpose:

Voice communication system designed to be used as an integrated simulator component in any kind of simulator system requiring voice communication.

Voice communication system designed to be used as a stand alone system for operator and procedure training.



CONNECT

Radio Simulations:

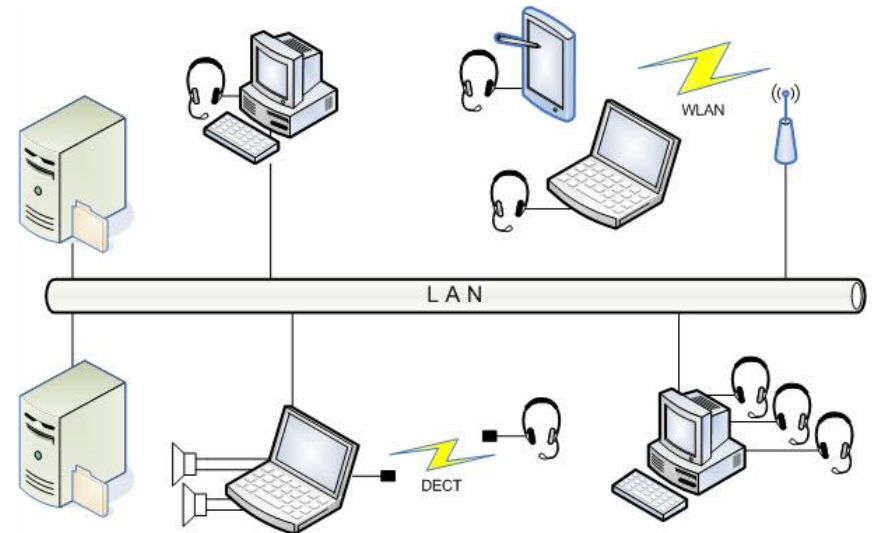
- VHF
- MF HF
- UHF
- UWT

Intercom Simulation:

- Configurable intercom groups

Recording/Playback:

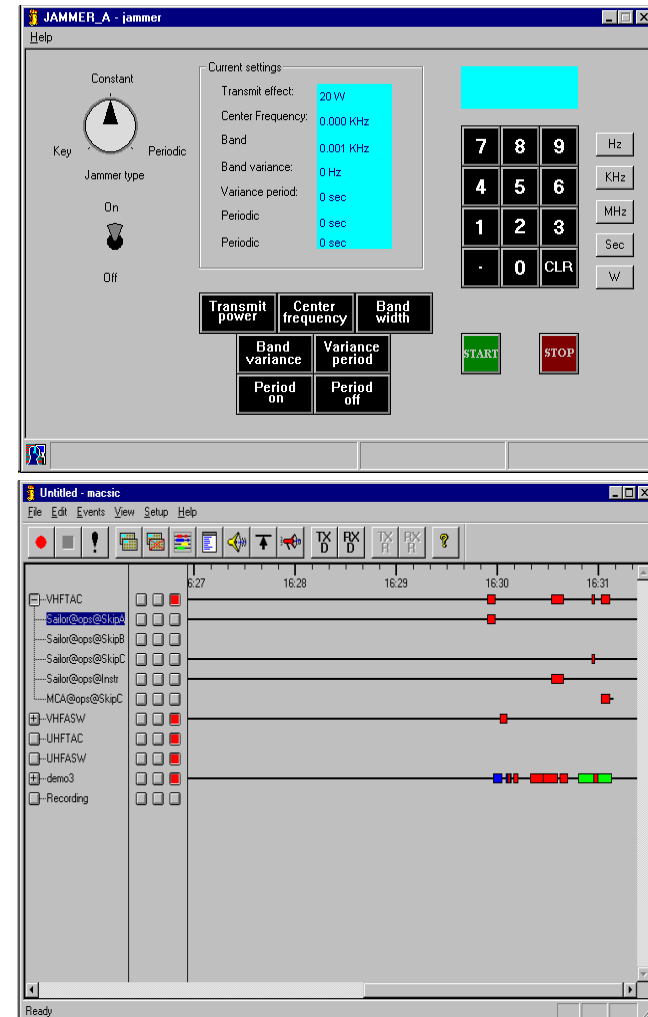
- All radio communication are recorded
- All radio communication can be played back
 - During exercise (During Action Review)
 - After exercise (After Action Review)



CONNECT

Instructor functionality:

- Net configuration
 - New nets can be added during an exercise
- Unlimited supervisor monitor and access to all nets
- Unlimited supervisor monitor and access to
 - One student
 - Group of students
 - All students
- Jamming of selected net
- Communication shortage simulation
- Special Public Address signal



CONNECT

Client functionality:

- Radio access
- Intercom access
- User interface:
 - Hard panel (operational, Mock up or generic)
 - Emulated Soft panel
 - Generic Soft panel

