



KONGSBERG

IPX600 – Tactical Media Gateway and Router

The link between EriTac and IP networks

- *Integrates IP networks and Tactical Networks (EriTac)*
- *Provides IP networks with Military Gateways*



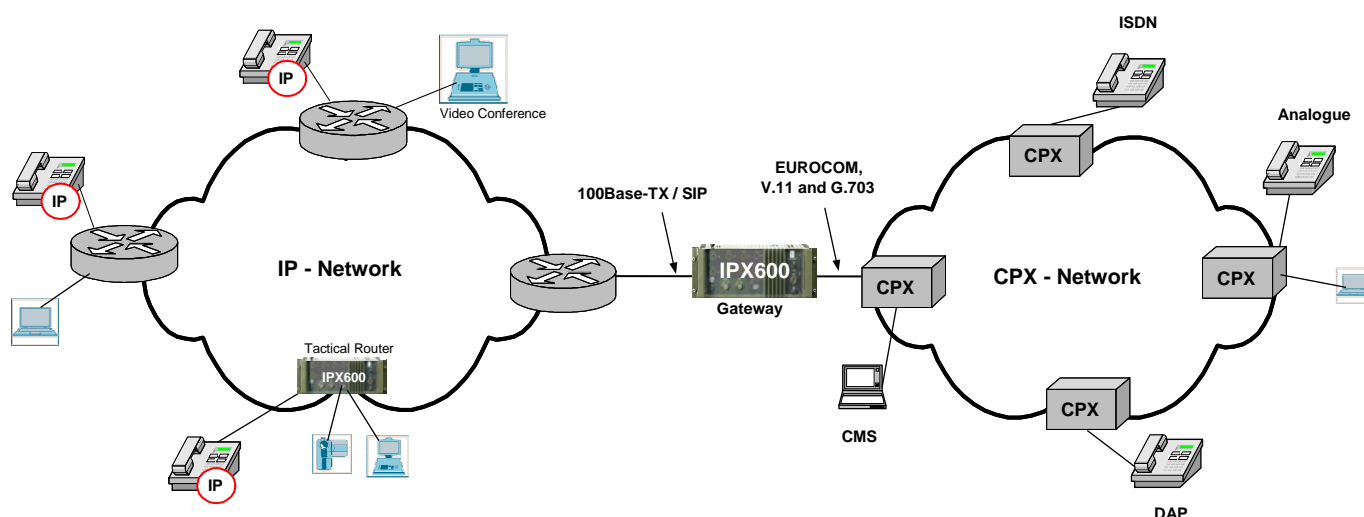
IPX600 is a configurable media gateway and router, supporting a range of different interfaces.

IPX600 provide a wide range of network services.

Its small size and low weight together with its inherent properties for communications readiness, makes IPX600 particularly suitable for communication in and between tactical units frequently on the move.

Features:

- Media gateway with voice transcoding and compression.
- Conversion between SIP and TDM domain/military gateway signalling
- Router with multiple Network Services, Routing Protocols and QoS handling
- Programmable interfaces available
- Local and remote management and configuration
- Direct Interfacing and Plug Compatibility with the CPX switching family and Radio Link RL532A



IPX600

Specifications

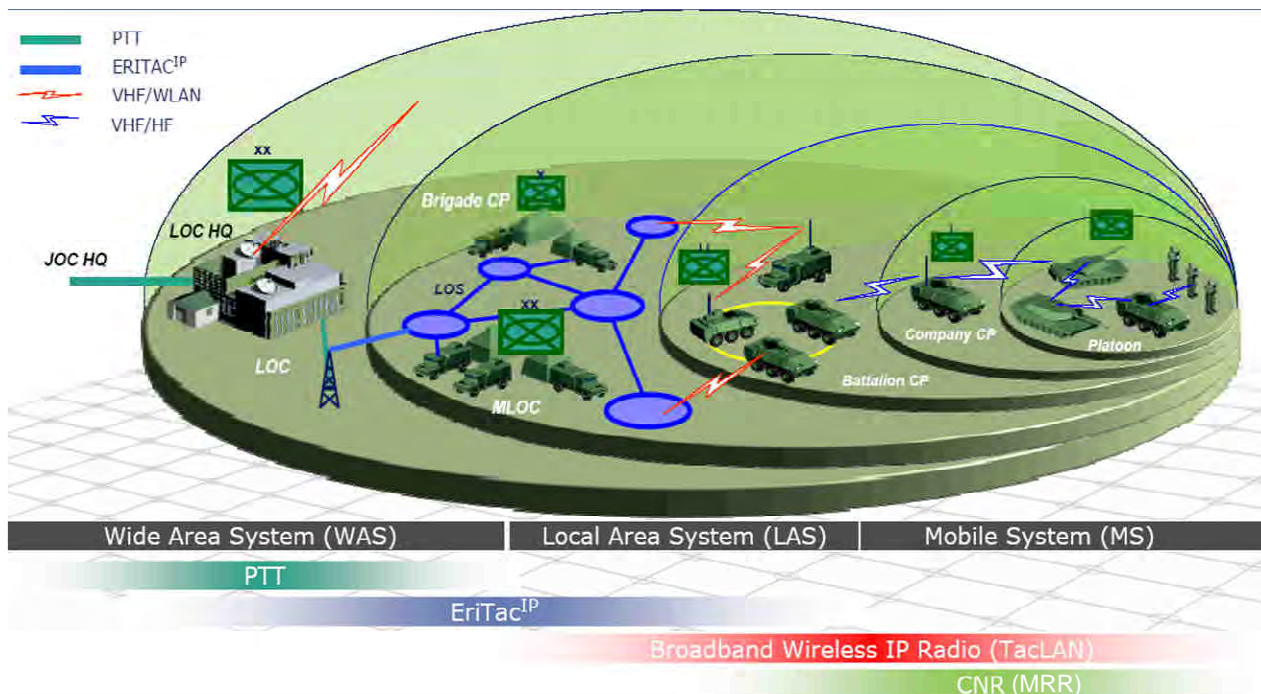
Interfaces	
Ethernet	10/100Base-TX
ITU-T V.11	256, 512, 1024, 2048, 4086, 8192, 8448 kbit/s
ITU-T G.703	2048 kbit/s
EUROCOM D/1	256, 512, 1024, 2048, 4086, 8192, 8448 kbit/s
STANAG 4206	256, 512 kbit/s
STANAG 4578 Ed. 1	2048 Kbit/s
Protocols	
CPX trunk group	OSPF
SIP	RIPv2
QSIG	PPP
Q.931/Q.932	STANAG 4578 Ed.1
EUROCOM	STANAG 4206 series
	ITU-T G.711 to/from CVSD
Services	
DHCP	Remote Management from CMS
DNS	WEB Management server
Call handling	
SIP	

Dimensions	Power Supply	Operating temperature
Height: 177 mm	Input Voltage: 19-32 V DC	-20°C to +55°C
Width: 483 mm	35 watts (nominally)	
Depth: 350 mm		
Weight: 15 kg + (Configuration dependent)		



EriTac^{IP}

- **RL532A** - Frequency Hopping Radio Link in Band III+
- **IPX600** - Tactical Media Gateway and Router
- **CPX300** - Multi-Protocol & Multi-Media Switch



This publication is not to be regarded as a complete system specification, or to be used as a contract document. We reserve the right to change the design or specifications without prior notice.

IPX600 datasheet rev pc2e_ 16 Des 2008
© Kongsberg ASA, 2008



KONGSBERG

www.kongsberg.com

Kongsberg Defence & Aerospace AS
Defence Communications
P.O.Box 87, NO-1375 Billingstad, Norway
Tel: +47 32 28 82 00 Fax: +47 66 84 82 30
kdcsales@kongsberg.com
www.kdefence.com / www.kongsberg.com