

# DDS 9001

## Diver Detection Sonar

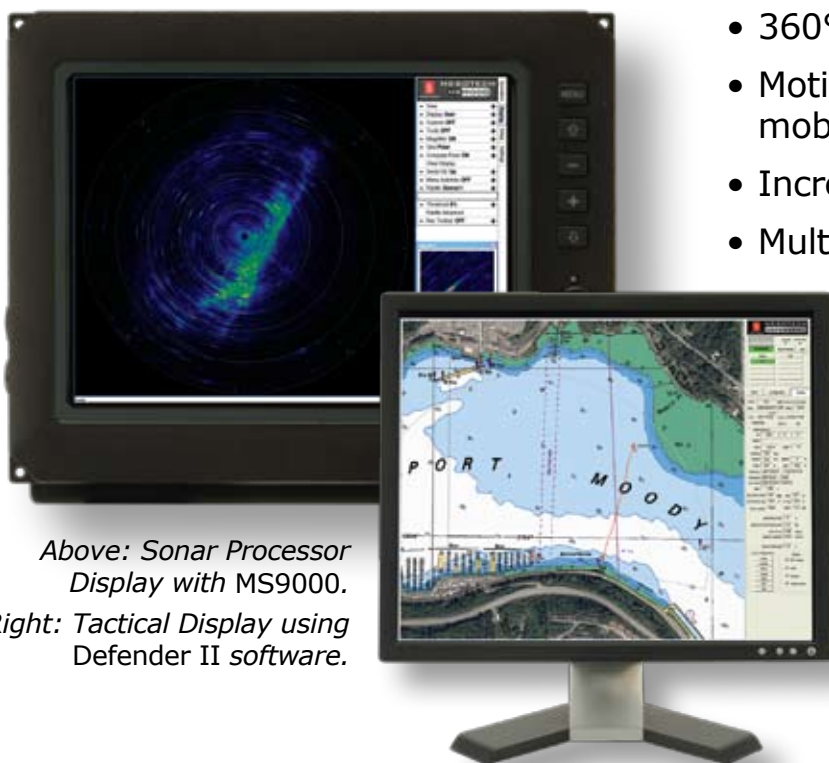
The DDS 9001 Diver Detection Sonar system improves on the already proven technology of the Kongsberg Mesotech SM 2000, currently in use by the US Navy and Coast Guard—now with 360° coverage in a compact, lightweight package.

The DDS 9001 consists of a titanium sonar head that connects directly to a surface interface unit. Telemetry configurations include a standard Ethernet connection or an optional fiber optic configuration capable of communicating over 500m of cable without the need for external hardware. Communication up to 5000m is possible with the use of an external AC to DC power converter placed within 500m of the sonar head.



### DDS 9001 Features

- 360° coverage
- Motion-compensated for mobile applications
- Increased effective bandwidth
- Multiple pulse types: CW, FM CHIRP
  - Supports long pulse widths
  - High source level
  - Increased sample rate
- Built-in fiber optic option does not require additional external hardware
- Built-in pitch, roll, heading, and depth sensors
- Lightweight, less than 250lb



*Above: Sonar Processor Display with MS9000.*

*Right: Tactical Display using Defender II software.*

### Key Facts

The DDS 9001 provides for 360° of coverage. The beams allow for discrimination between small targets, making it easier to identify targets such as divers.

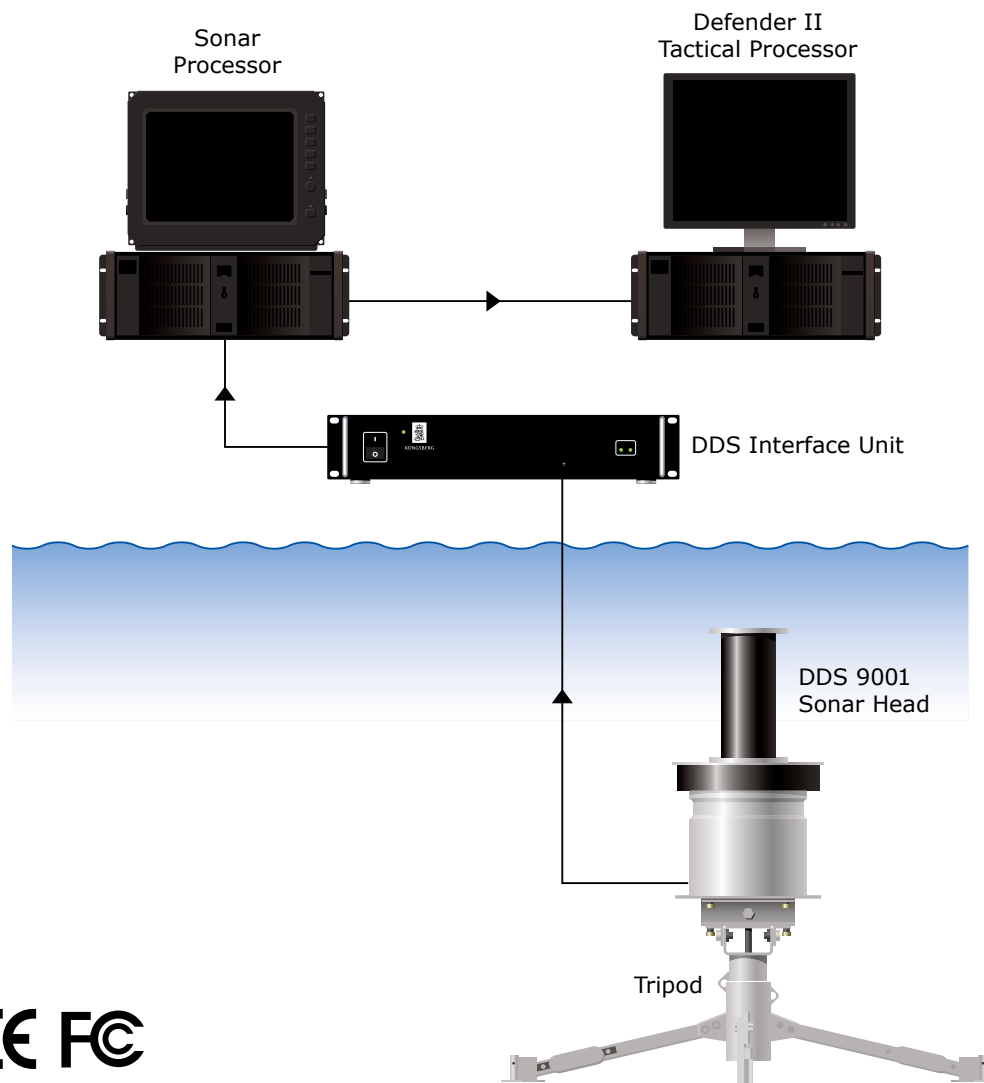
The system has a maximum range of up to 800 meters. Maximum detection range capability is dependent on factors such as water temperature and salinity.

### Tactical Processor Option

Two versions of *Defender II* software are available: one for waterside application, and one for ship borne applications. A connection to a local area network (LAN) is provided to connect to a Defender II Tactical Processor or a C2/C4ISR central command and control system.

### Sonar Processor

The sonar processor uses a rugged rack-mountable computer chassis. The DDS Interface Unit connects to the sonar processor via an Ethernet connection. The Interface Unit powers and communicates with the sonar head using a single power and telemetry cable. A standard Ethernet connection or optional fiber optic telemetry connection is made directly with the sonar head without the need for any external hardware.



ISO 9001



© Copyright 2007 Kongsberg Mesotech Ltd. All rights reserved.  
Kongsberg Mesotech Ltd. reserves the right to change product specifications without notice.

### KONGSBERG MESOTECH LTD.

1598 Kebet Way, Port Coquitlam, BC Canada V3C 5M5

Tel. +1.604.464.8144 • E-mail: [km.sales.vancouver@kongsberg.com](mailto:km.sales.vancouver@kongsberg.com)

[www.kongsberg.com](http://www.kongsberg.com)



KONGSBERG