

EA RDS Quick Reference Guide

Remote control software for EA 600

System description

The EA RDS Remote Display System is a remote control viewer for use with the EA 600 single beam hydrographic echo sounder.

The RDS software is designed to display a real time echogram received from the host echo sounder, but will only permit a limited access to the menu system. The RDS provides the same views as the host echo sounder. You can however not define any transceiver settings, as these are controlled from the host echo sounder only.

The EA RDS software has no licence code. The software can be run on one or more computers by accepting the EA raw data format over a network connection.

Getting started

The RDS is started from the computer's desktop.

On the host echo sounder, you need to activate the necessary data transmission in the **Classification** menu. When this output is enabled, a configuration telegram is sent out to start the EA RDS.

One necessary parameter must be entered in the EA RDS after initialisation; the Network Local Computer input port.

Computer requirements

In order to run the EA RDS with import data from the host echo sounder, please observe the following minimum computer requirements.

- Two network interface boards, each 10 or 100 Mbs
- 1 GHz CPU speed
- 512 Mb RAM
- Parallel port for printer
- Microsoft Windows® 2000/XP®

Software requirements

In order to export data to external computers, the host echo sounder computer must run the *MDM 400 Data Distribution* program. This program is included on the EA RDS CD.

Setting up the data interface

Observe the following procedure to set up the data interface.

On the host computer:

- 1 On the **Interfaces** menu, select **Classification**.
- 2 Click **Output enabled**.
- 3 Set port 4711.
- 4 Set IP address 127.0.0.1.
(These are the internal port and address to the Data Distribution program)

MDM 400 Data Distribution program:

- 1 Set source port 4711
- 2 Set destination port: xxx.xxx.xxx.xxx: 10183

EA RDS: Interface / Network Interface / Local computer-input:

- 1 On the **Interfaces** menu, select **Network Interface**.
- 2 For **Local Computer - Input** select port 10183.

Software installation

Observe the following menu for software installation.

- 1 Insert the CD.
- 2 Allow the computer to detect the CD, and to start the installation program.

If the installation program does not start automatically, run *Setup.exe* on the CD-ROM.

- 3 Click **Complete installation**.
- 4 If a licence dialogue box appears, click **Enter**.
- 5 Allow the echo sounder installation program to copy the necessary files, and follow the instructions provided.
- 6 **Do not remove the CD** until the computer has powered up and rebooted after the installation.

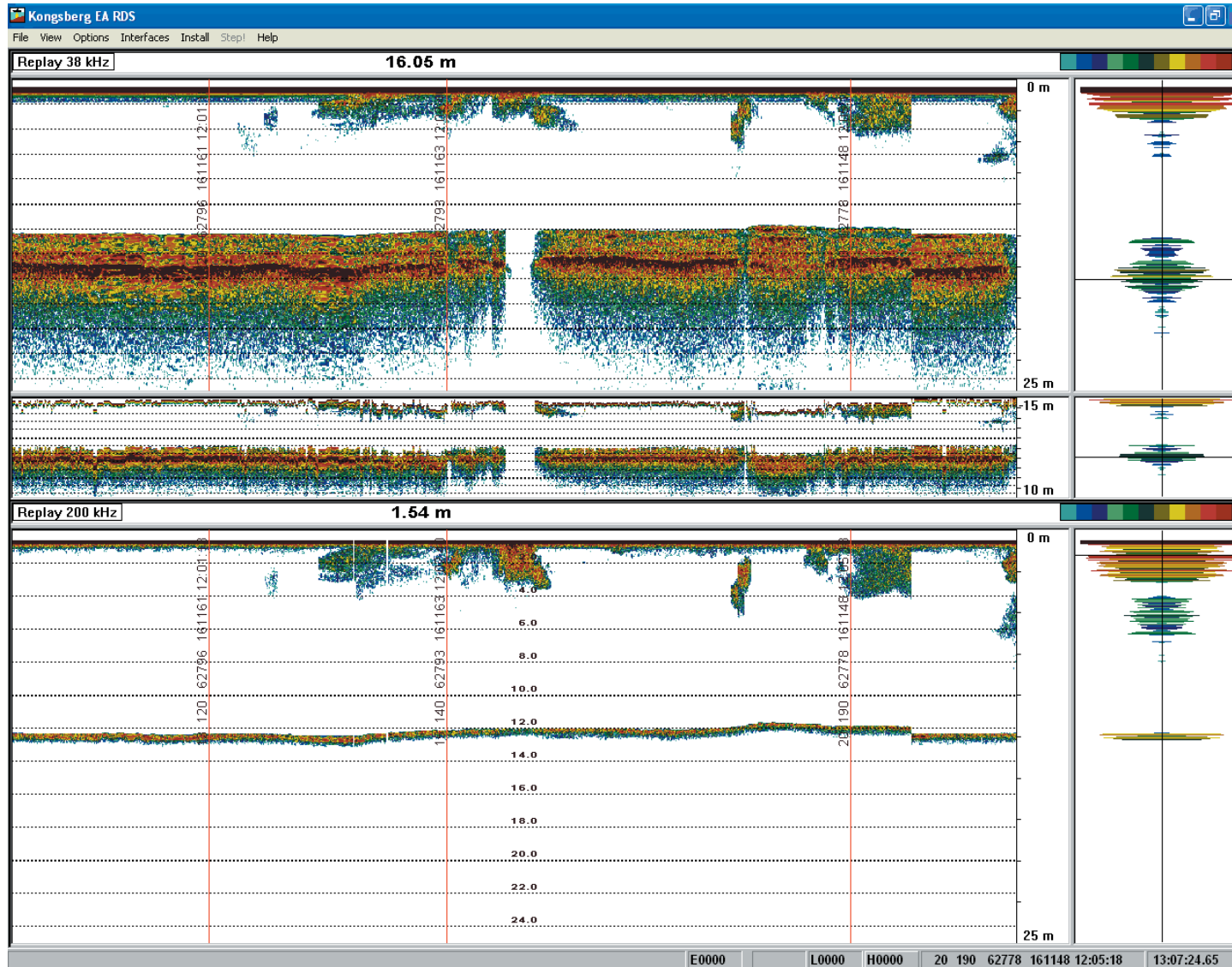
Source Port	Source File	Packets	Destination : Port	Destination : Port	Destination : Port	Destination : Port	Destination File
4711		0	157.237.1.12 : 10183	157.237.1.25 : 10183			
0		-1					
0		-1					
0		-1					
0		-1					
0		-1					
0		-1					
0		-1					
0		-1					
0		-1					
0		-1					
0		-1					
0		-1					
0		-1					
0		-1					

The main view of the Data Distribution MDM 400 program allows you to enter the identification (source port) of the host echo sounder (4711) and the IP addresses to all the remote computers running the EA RDS application.



EA RDS Quick Reference Guide

Remote control software for EA 600



Operation

To operate the EA RDS, refer to the host computer's operator manual. All the main operational functions are available, but you can not:

- alter any of the transceiver settings
- change interface settings
- store or retrieve data

The following dialogue boxes and functions are available:

- Surface range
- Colour scale
- Echogram dialogue box
- Bottom detector dialogue box
- View/Layout page
- File/Print and View/History page

Note that you can not select your own directory for storage of history files.

Input such as Navigation, Annotation, Sound velocity and Temperature are readable on the RDS if they are connected to the host echo sounder.

